

BIXOLON®

Software Manual
True Font Downloader

Rev. 3.00

<http://www.bixelon.com>

Introduction

This Windows Driver Installation Manual provides information about how to download true type fonts to the printers according to PC operating system (OS).

It is advisable to read the contents of this manual carefully before using the customer display for the first time.

We at BIXOLON maintain ongoing efforts to enhance and upgrade the functions and quality of all our products. In following, product specifications and/or user manual content may be changed without prior notice.

Table of Contents

1. Operating System (OS) Environment4

2. Supported Printers.....4

3. Installation4

4. True type font Download5

1. Operating System (OS) Environment

The following operating systems are supported for usage.

- Microsoft Windows XP SP3 (32bit, 64bit)
- Microsoft Windows Server 2003 SP1 (32bit)
- Microsoft Windows Server 2003 (64bit)
- Microsoft Windows VISTA (32bit, 64bit)
- Microsoft Windows Server 2008 (32bit, 64bit)
- Microsoft Windows Server 2008 R2 (64bit)
- Microsoft Windows 7 (32bit, 64bit)
- Microsoft Windows 8 (32bit, 64bit)
- Microsoft Windows Server 2012 (64bit)
- Microsoft Windows 10 (32bit, 64bit)

2. Supported Printers

The font downloader is available for the following BIXOLON printers.

- SLP-TX220/TX223, TX420/TX423, TX400/TX403, TX400R/TX403R
- SLP-DX220/DX223, DX420/DX423
- SLP-DL410/DL413
- SLP-T400/T403, T400R/T403R
- SLP-D220/D223, D420/D423
- SRP-770II/770III
- SPP-L3000

3. Installation

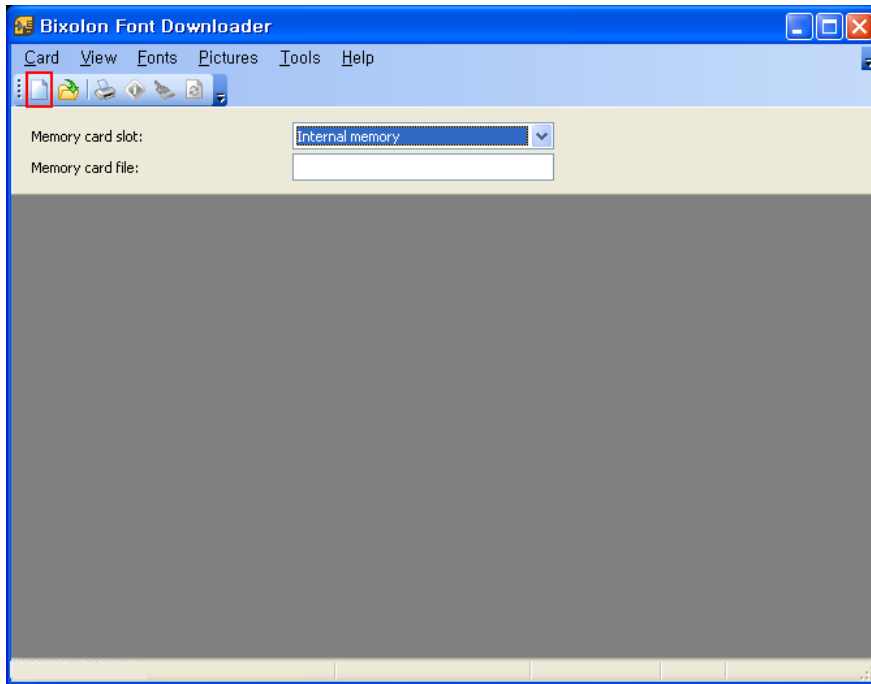
- 1) Double-click the installation file (BixFD.exe).
 - * The file can be found in the windows driver directory for Bixelon Label printers.
 - eg) C:\Program Files (x86)\BIXOLON\Printer drivers\SLP-TX400
 - eg) C:\Program Files (x86)\BIXOLON\Printer drivers\SPP-L3000
- 2) Follow the instructions on the screen to complete the installation process.

4. True type font Download

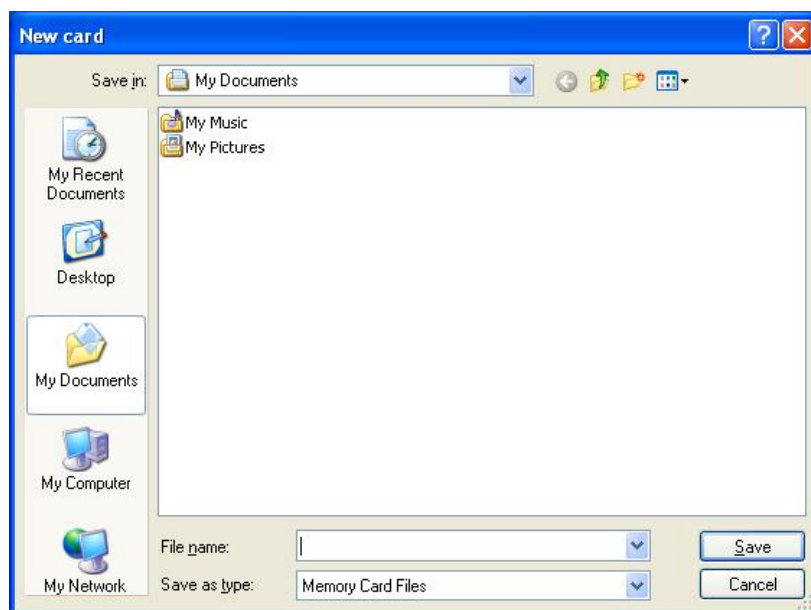
1) Double-click the “BIXOLON Font Downloader” icon.

Note Run this downloader utility as an administrator on Windows Vista or later.

2) Click on the “New” icon to make a new project file.

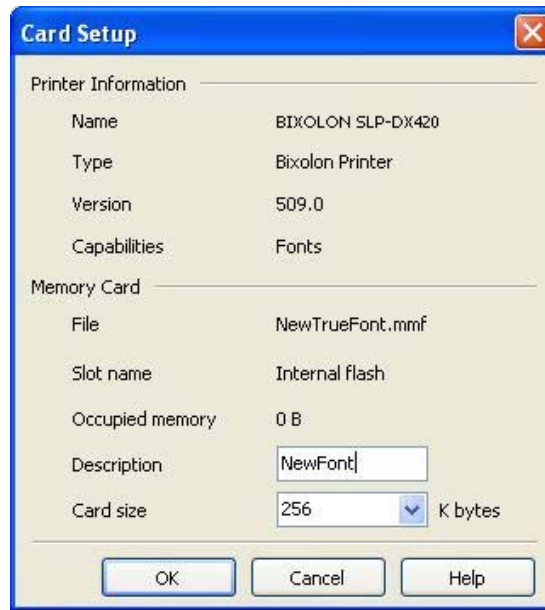


3) Select a file path, enter a file name for the new memory card file, and then click **Save**

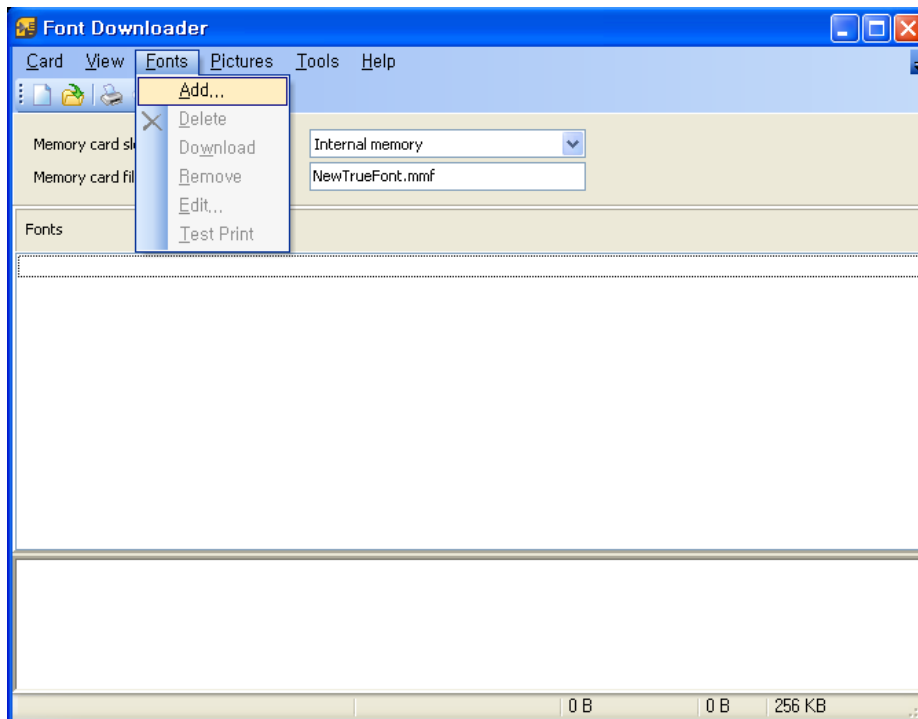


True Font Downloader

4) Specify the description and size for the memory card, and then click the **OK** button.



5) Click on the "Fonts-Add" to select font to be downloaded.

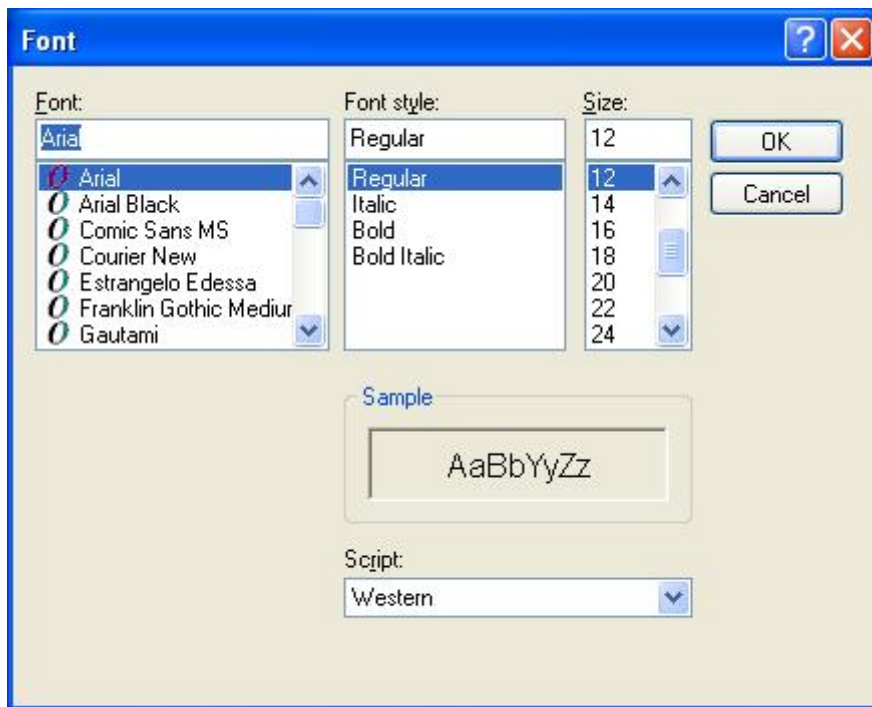


Note

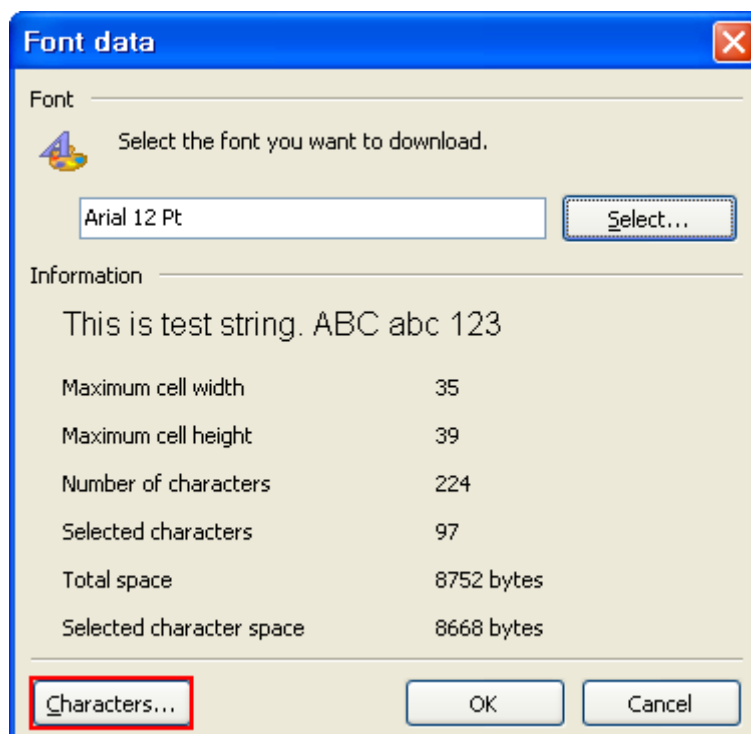
The characters represented by 1 byte (0x00 to 0xFF), only can be downloaded. The characters such as Chinese, Japanese or Korean cannot be downloaded.

True Font Downloader

6) Specify the properties of the font and click the **OK** button.

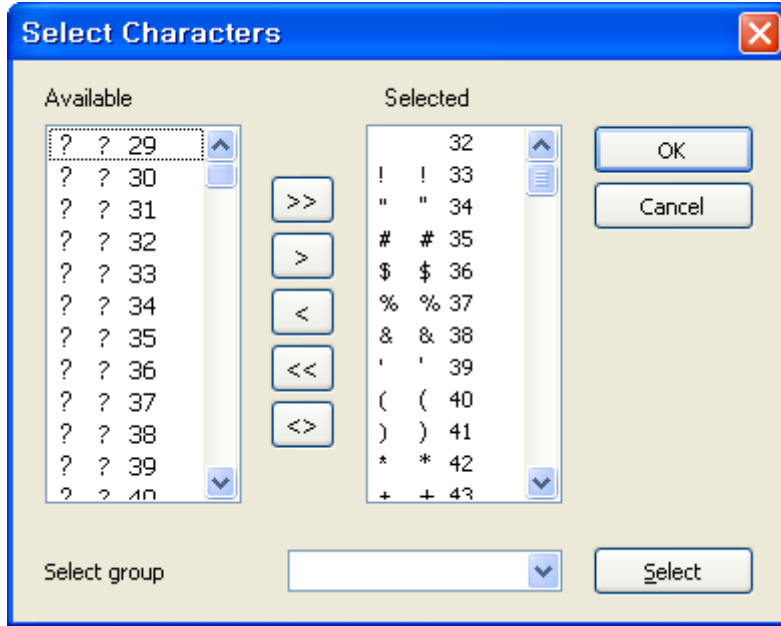


7) Check the information of the font to be downloaded. If you want to select characters to download, click **Characters** button.



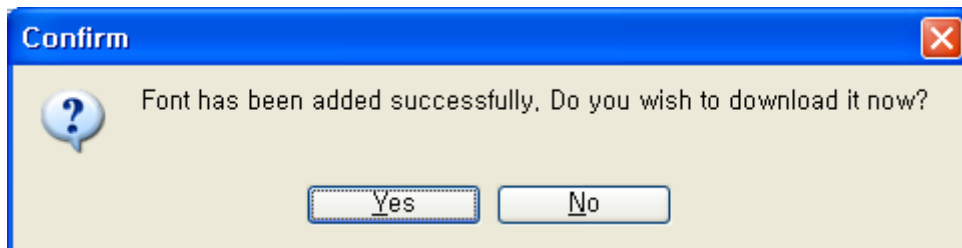
True Font Downloader

8) Click **OK** button after selecting characters to download or remove.



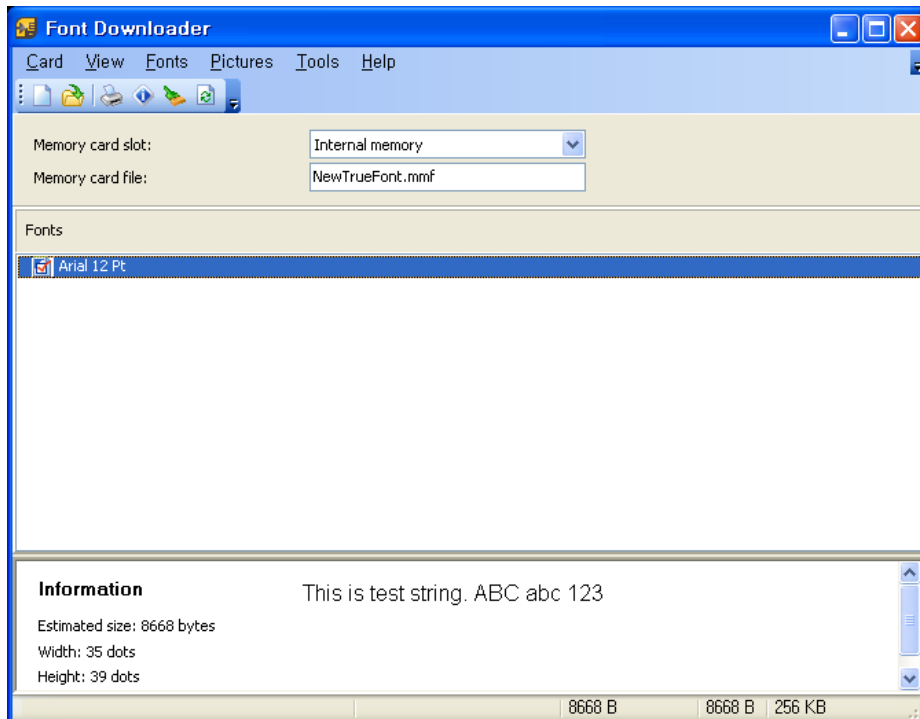
Symbol	Description
Available	Available font list
Selected	Selected font list to be downloaded
>>	Add all available fonts
>	Add selected fonts
<	Delete selected fonts from the selected list
<<	Delete all fonts from the selected list
<>	Exchange fonts with each other

9) Click **Yes** button to start downloading the characters.

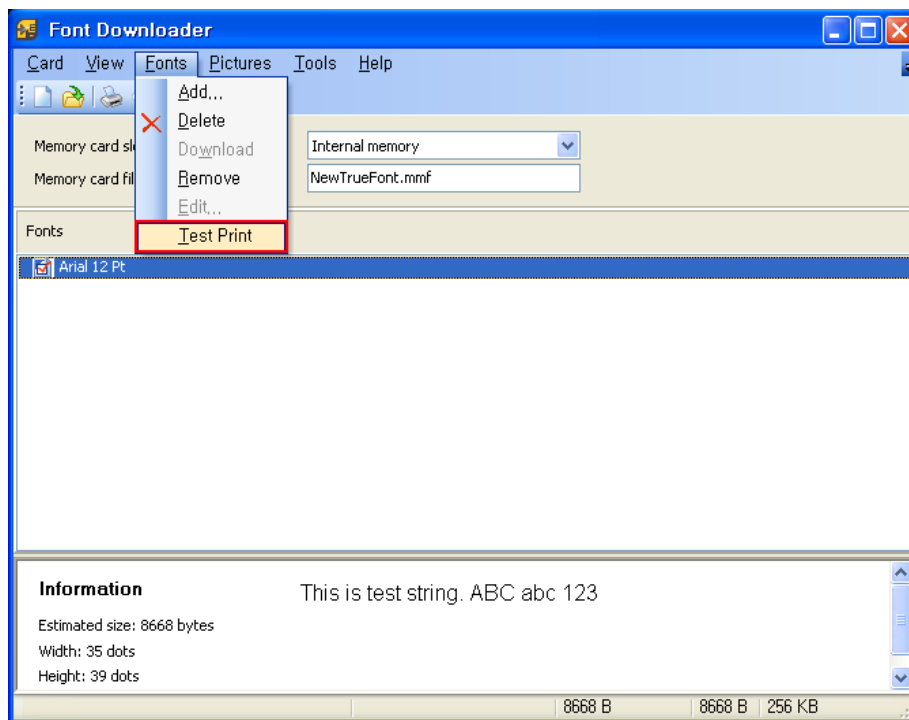


True Font Downloader

10) Downloaded font is shown on the Fonts list after download is completed.



11) You can print the downloaded characters by clicking “Fonts-Test Print”. Also, the downloaded characters can be printed using SLCS commands.

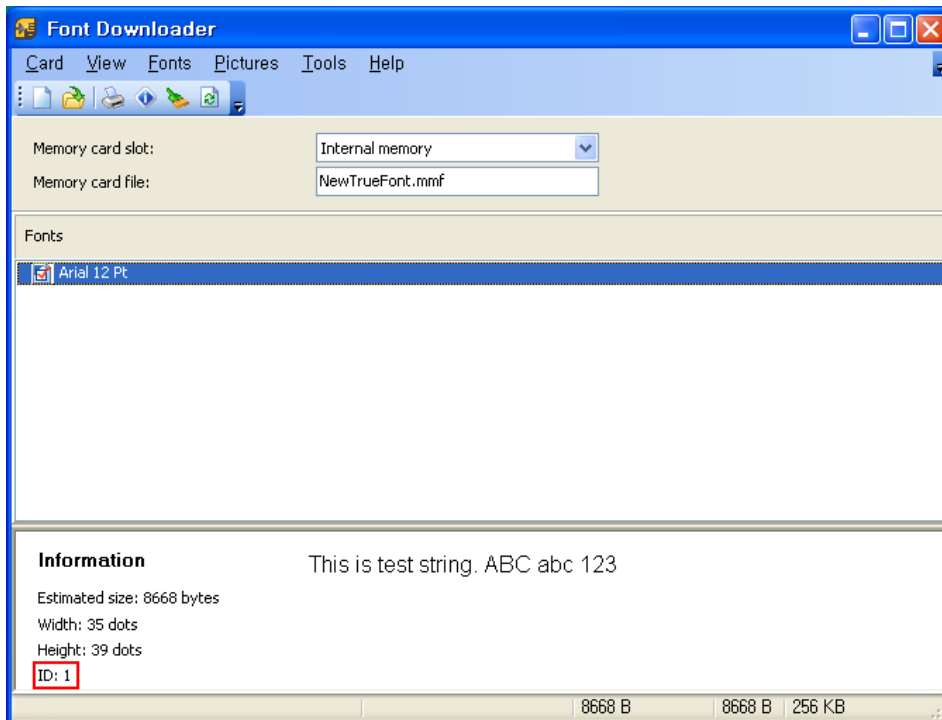


True Font Downloader

If ID is 1, font name is A, If ID is 2, font name is B...

eg) T10,10,A,1,1,0,0,N,N, 'This is a test'

eg) T10,10,B,1,1,0,0,N,N, 'This is a test'



Copyright Owned by BIXOLON

This User Manual and product are protected under copyright law.

It is strictly prohibited to copy, duplicate, translate or convert into electronic form the whole or any part of the manual and product without the prior written approval of BIXOLON.

BIXOLON maintains ongoing efforts to enhance and upgrade the functions and quality of all our products. In the following, product specifications and/or user manual content may be changed without prior notice.

The BIXOLON logo is the registered trademark of BIXOLON.

Warning - U.S.A

This equipment has been tested and found to comply with the limits for a Class A digital device pursuant to Part 15 of the FCC Rules. These limits are designed to provide reasonable protection against harmful interference when the equipment is operated in a commercial environment. This equipment generates uses, and can radiate radio frequency energy and, if not installed and used in accordance with the instruction manual, may cause harmful interference to radio communications. Operation of this equipment in a residential area is likely to cause harmful interference in which case the user will be required to correct the interference at his own expense.

Notice - Canada

This Apparatus complies with class "A" limits for radio interference as specified in the Canadian department of communications radio interference regulations. Get appareil est conforme aux normes class "A" d'interference radio tel que specifier par ministre canadien des communications dans les reglements d'interference radio.

Caution

Some semiconductor devices are easily damaged by static electricity. You should turn the printer "OFF", before you connect or remove the cables on the rear side, in order to guard the printer against the static electricity. If the printer is damaged by the static electricity, you should turn the printer "OFF".

Copyright © BIXOLON Co., Ltd. 2017. All rights reserved.

