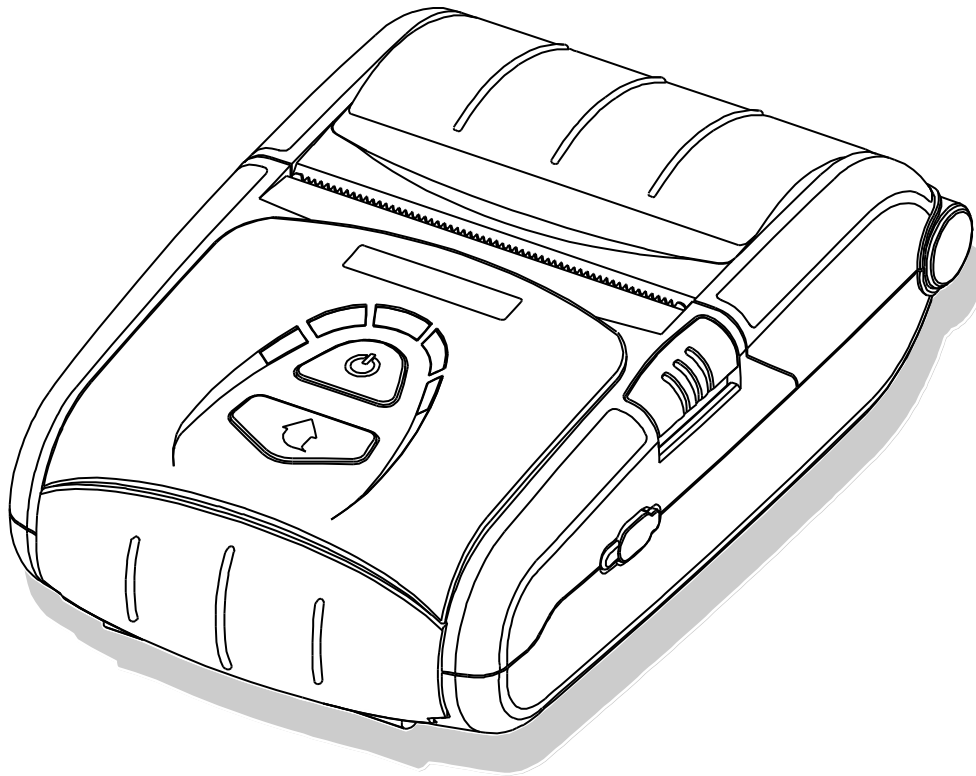


BIXOLON®

Unified Utility Manual
SPP-R200II

Mobile Printer
Rev. 1.00



Made for



iPod



iPhone



iPad

<http://www.bixolon.com>

■ Table of Contents

1. Notice.....3

2. Operating System (OS) Environment.....3

3. Virtual Memory Switch Manager Usage.....4

 3-1 When Using on a PC4

 3-2 When Using on a PDA.....7

4. NV Image Download Manager Usage.....10

 4-1 When Using on a PC10

 4-2 When Using on a PDA.....13

5. Support.....16

1. Notice

This Unified Utility Manual provides information on the utility program used to set printer operation conditions and add functions.

The utility program consists of three functions.

- 1) A function that sets printer operation conditions via non-hardware control, software-based virtual switches (**VMSM: Virtual Memory Switch Manager**)
- 2) A function that facilitates the downloading of image files, such as logos, intended for repetitive printing (**NV Image Download Manager**)
- 3) A function that is used to download and install the latest Firmware, which is subject to ongoing modification for the enhancement of product performance (**Firmware Download Manager**)

We at BIXOLON maintain ongoing efforts to enhance and upgrade the functions and quality of all our products. In following, product specifications and/or user manual content may be changed without prior notice.

2. Operating System (OS) Environment

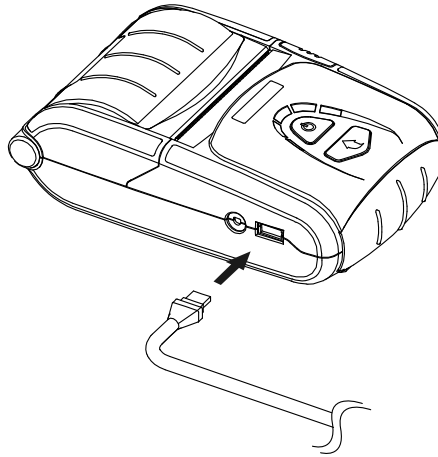
The following operating systems are supported for usage.

- Microsoft Windows XP (32bit/64bit)
- Microsoft Windows 2003 Server (32bit/64bit)
- Microsoft Windows Embedded For Point Of Service
- Microsoft Windows VISTA (32bit/64bit)
- Microsoft Windows 2008 Server (32bit/64bit)
- Microsoft Windows 7 (32bit/64bit)
- Microsoft Windows CE 5.0
- Microsoft Windows CE 6.0 (supported after building with custom SDK)
- Microsoft Windows Mobile 5
- Microsoft Windows Mobile 6

3. Virtual Memory Switch Manager Usage

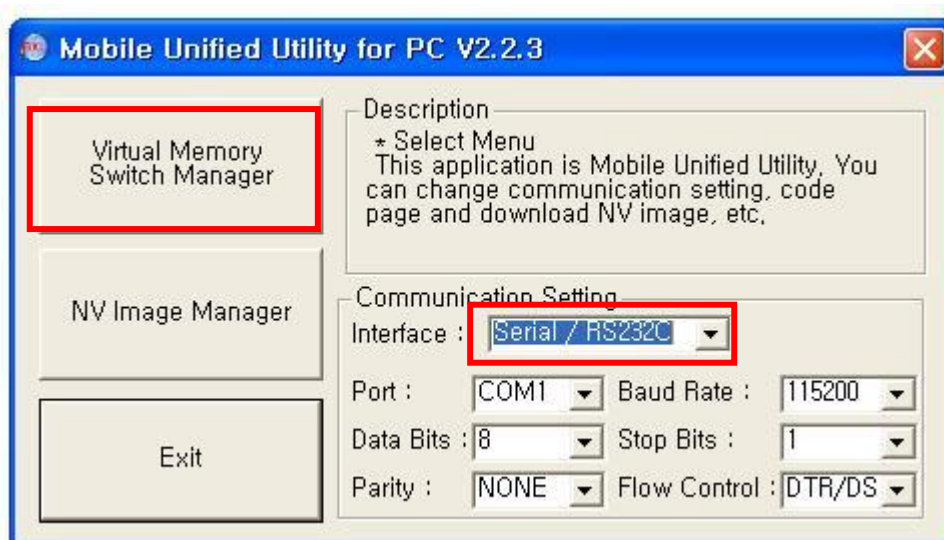
3-1 When Using on a PC

- 1) Connect the printer and the PC via the interface cable (USB or Serial type).
If using WLAN or Bluetooth, a cable connection is not necessary.



- 2) Turn on the printer power.
- 3) Prepare the Unified Utility executable file to be used on the PC.
The executable file can be found on the enclosed CD.
(Mobile Unified Utility ver 2.x.x.exe)

※ Latest file versions can be downloaded from the BIXOLON website
(www.bixolon.com).
- 4) Run the Unified Utility executable file.
- 5) Select "Interface" and click the "Virtual Memory Switch Manager" button.
Refer to the Network or Bluetooth Connection Manual regarding the Interface (may vary according to device).



6) The Virtual Memory Switch settings information of the printer appears on screen.

Virtual Memory Switch Manager : (fw:V01.00 STOBa 0821...)

General Configuration

Printer Configuration

Printing Density : Printing Speed

Two-Dimensional Barcode

PDF417 Datamatrix Maxi Code QR Code

Default Code Page :

Printer Service : Receipt Label

Default Font Type : A font(12x24) B font(9x17) C font(9x24)

Beep For Roll Paper End : Off On

Beep Mode For Low Battery Status : On Off

Double Byte Character Mode : Off On

Black Mark Sensor : Front Rear

MFI(iOS) : Enable Disable

Auto Power Off Time : min
(Not Connected) (1~90 ex> 30)

Auto Power Saving Time : sec
(Connected) (10~255 ex> 100)

MSR Configuration

MSR Trigger

Serial Interface Configuration

Baud Rate : Parity :

Data Bits : Flow Control :

RF Interface Configuration

Select RF Interface Type

Enable Bluetooth Setting

Bluetooth Interface Configuration

Authentication & Encryption : Disable Enable

Connection Mode : Mode 1 Mode 2 Mode 3

PIN Code : Printer Name :

- 7) After setting the desired function(s), click the “Save” button to store settings.
The functions per category are as follows.

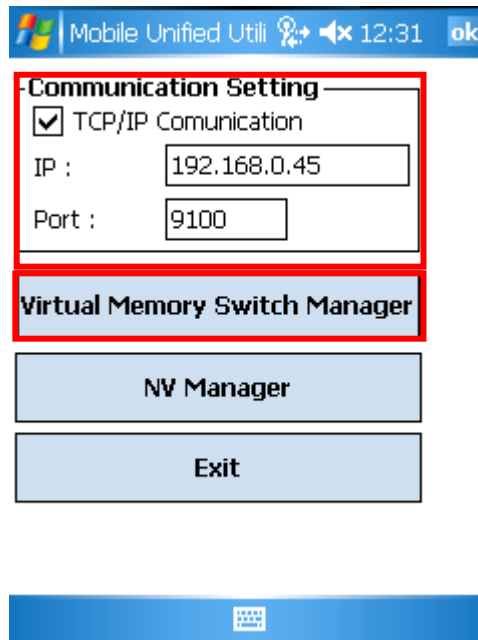
Function	Description
Printing Density	Sets printing density Value range is 80~150%
Printing Speed	Sets printing speed Value range is 50 or 100 mm/s
Printer Service	Printer Service change receipt mode or label mode.
Default Code Page	Sets the default code page (Refer to the Code Page Manual for more detailed information on the Code Pages supported.)
Default Font Type	Sets default font type and size
Beeps for Low Battery	Sets beeping when reaching low battery capacity
Beeps for Paper Roll End	Sets no beeping or beeping when reaching paper roll end
Double Byte Character Mode	Sets double byte language usage mode
Black Mark Sensor	Sets using front or rear paper sensor(black mark sensor)
Auto Power Off Time	Sets time interval between absence of printer use and automatic turning off of printer power
Auto Power Saving Time	Sets time interval for automatic entering into power saving mode while the printer is in use
MSR Trigger	Sets MSR data scanning mode, 7 modes supported (Refer to “GS (E” in the Control Commands Manual.)
RF Interface Configuration	Sets Wireless connection type (WLAN, Bluetooth)
Serial Interface Configuration	Changes the serial Interface setting *Printer must be reset after change for changed setting to take effect
Authentication & Encryption	Sets or cancels Authentication & Encryption mode when connecting via Bluetooth * If Authentication & Encryption mode is disabled, connection to a device can be done without a PIN Code.
Connection Mode	Sets Mode1, Mode2, or Mode3 when connecting via Bluetooth. - Mode1: connection possible only with the first device with which connection succeeds - Mode2: connection with all Bluetooth enabled devices possible via use of a PIN Code - Mode3: connection possible only with the first device with which connection succeeds and searching or use of connected device possible
PIN Code	Changes the PIN Code required for Bluetooth connections (maximum 12 characters long)
Printer Name	Changes the device name produced when establishing a Bluetooth connection (maximum 12 characters long)

* You can check authentication, Encryption mode as well as connection mode of the Bluetooth from self test page.

- 8) Reset the printers.

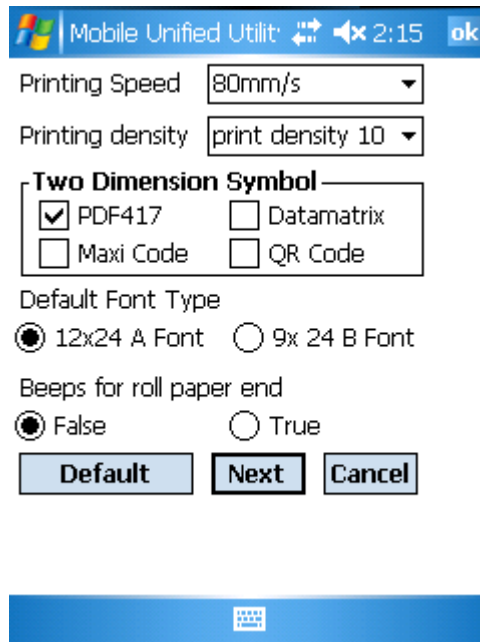
3-2 When Using on a PDA

- 1) Turn on the printer power.
 - 2) Prepare the Unified Utility executable file to be used on the PDA.
The executable file varies according to CPU and can be found on the enclosed CD.
 - **ARMV4: Mobile Unified Utility armv4 ver 2.x.x.exe**
 - **ARMV4I: Mobile Unified Utility armv4i ver 2.x.x.exe**
- ※ Latest file versions can be downloaded from the BIXOLON website (www.bixolon.com).
- 3) Run the Unified Utility executable file.
 - 4) Check "TCP/IP Communication" and click the "Virtual Memory Switch Manager" button.
Refer to the Network Connection Manual regarding the TCP/IP setting (may vary according to device).

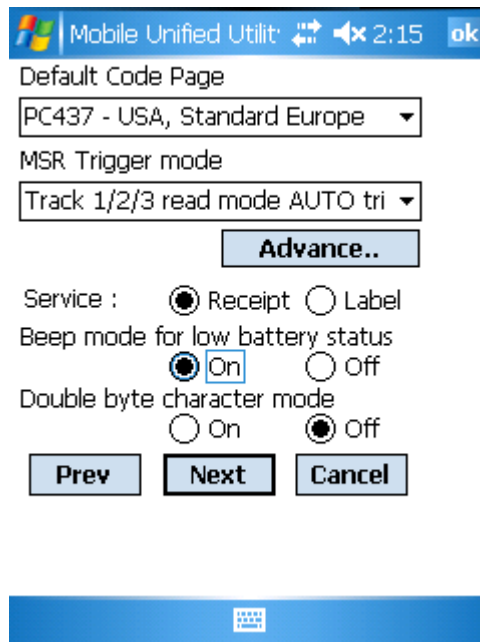


- 5) The Virtual Memory Switch settings information of the printer is received and shown on screen.

- 6) After setting the desired function, click the “Next” button.
(The functions per category are identical to those on the PC.)
* Please click "Default" button to return the printer to default setting.

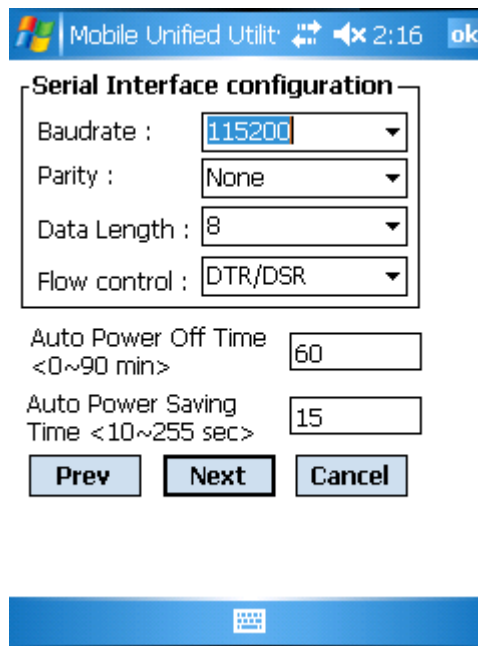


- 7) After setting the desired function, click the “Next” button.
(Clicking the “Prev” button returns to the previous screen.)



8) After setting the desired function, click the “Save” button.

* If you want to change Bluetooth settings, select the Bluetooth at “RF Interface Type”

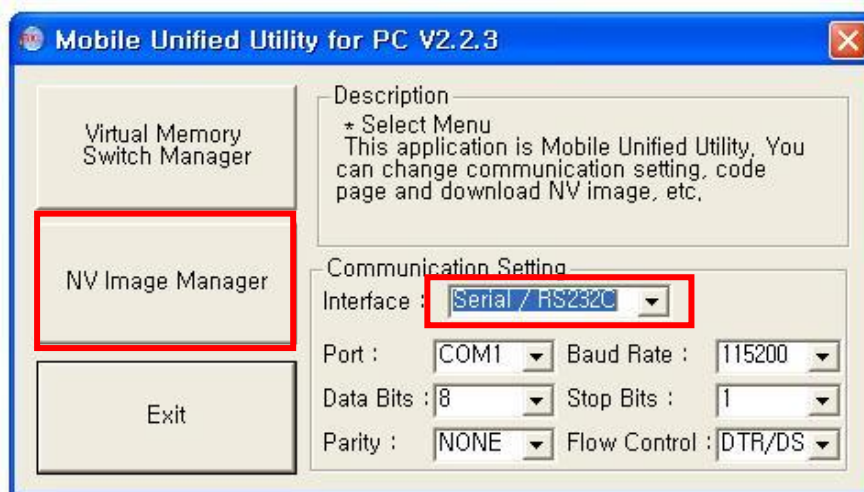


9) Reset the printer.

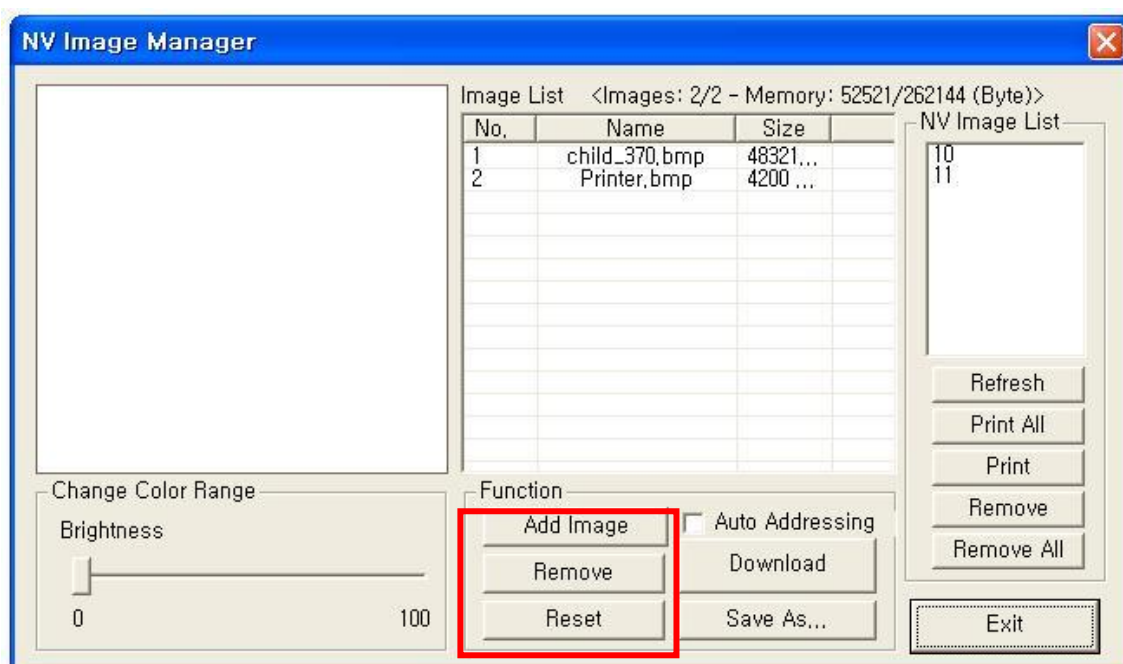
4. NV Image Download Manager Usage

4-1 When Using on a PC

- 1) The printer connection method and instructions for running the Unified Utility executable file are identical to those provided in “3. Virtual Memory Switch Manager”. Refer to the aforementioned section.
- 2) Prepare the image file on the PC (e.g. Main.bmp)
- 3) Select "Interface" and click the " NV Image Manager " button.
Refer to the Network or Bluetooth Connection Manual regarding the Interface (may vary according to device) “



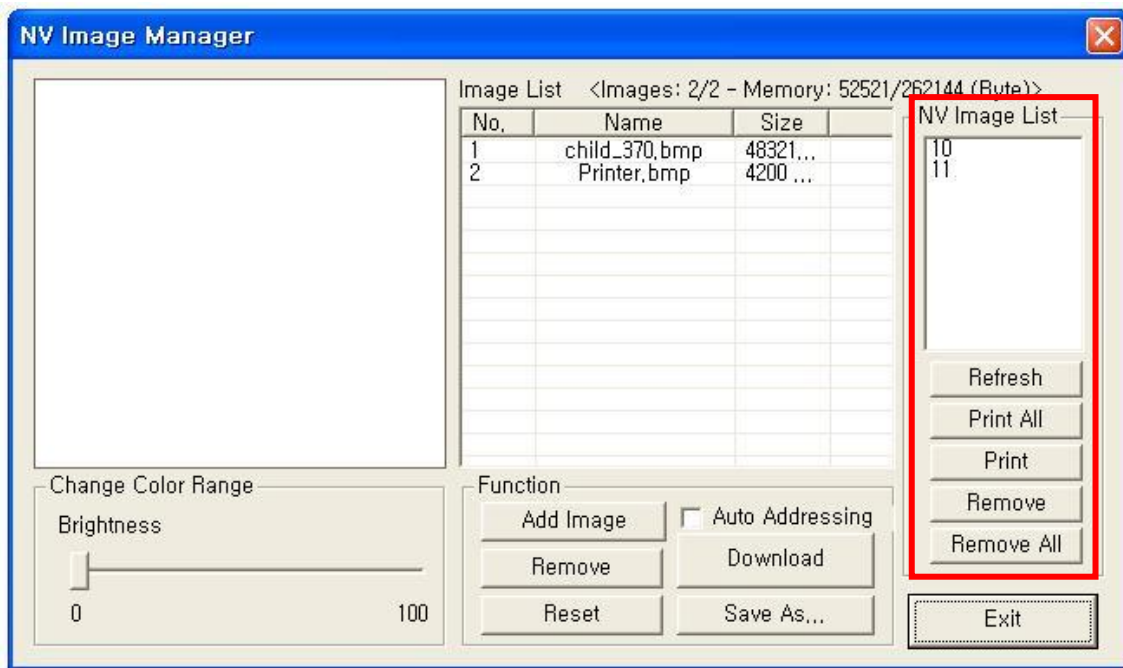
- 4) Click the “Add Image” button to add the desired image(s) to the image list.
Click the “Remove” button to delete selected image(s), and click the “Reset” button to delete the entire image list.



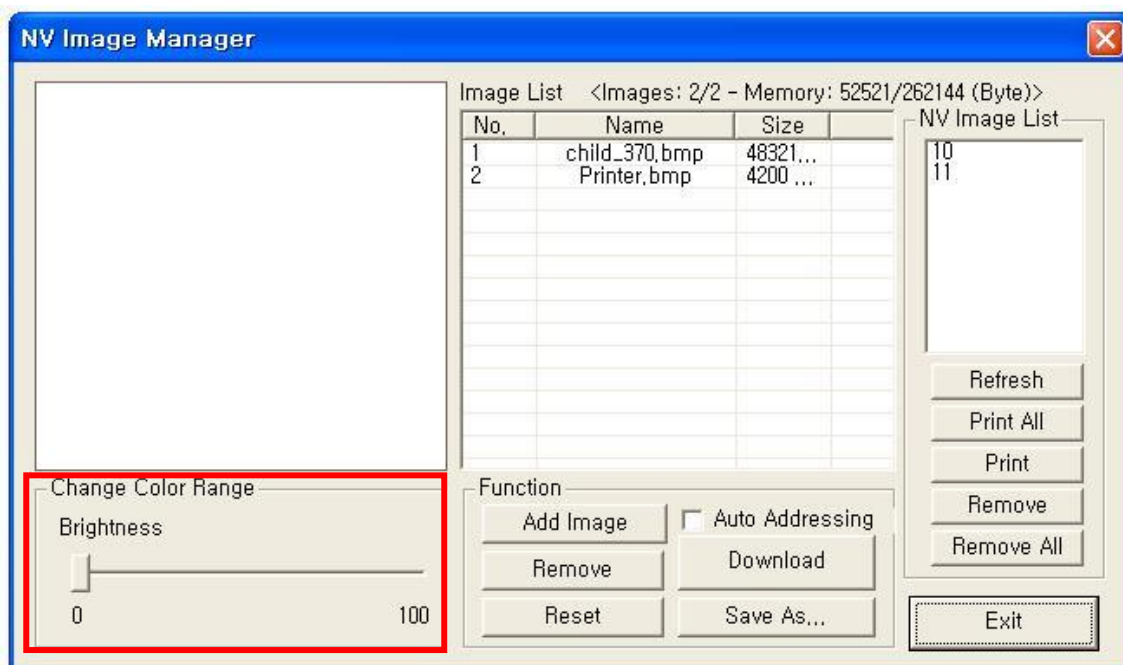
5) The “Used address list” contains the address numbers of saved images.

The following buttons can be used to handle saved images.

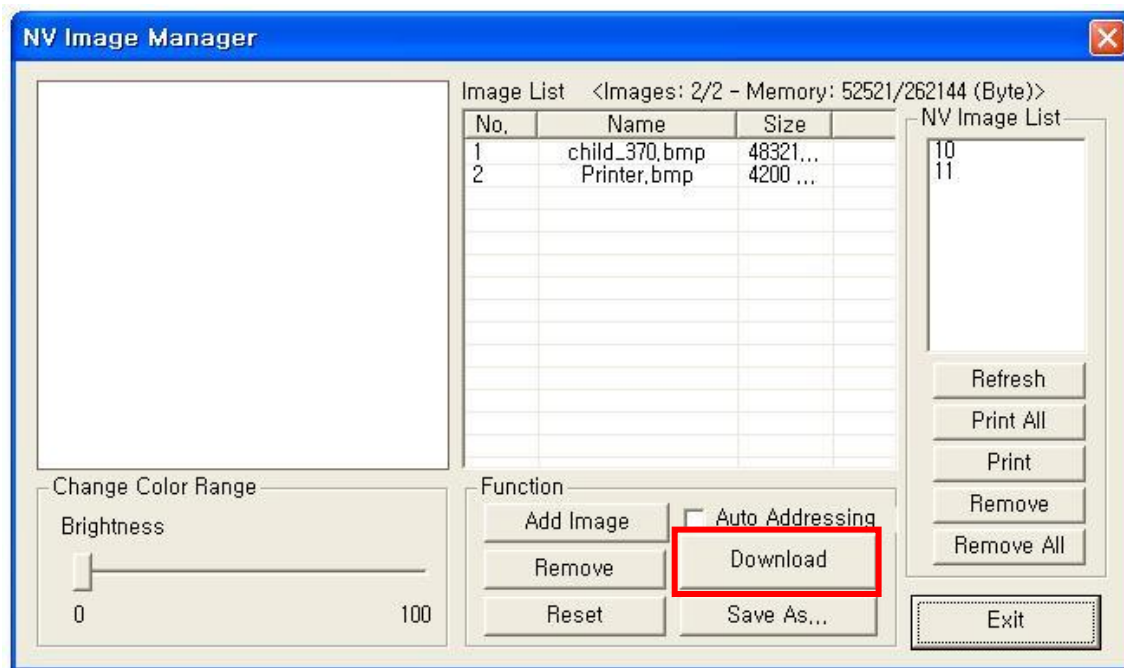
- “Print All” Button: Prints all images in the list
- “Print” Button: Prints selected image(s)
- “Remove All” Button: Delete all images in NV memory



6) After selecting an image from the image list, adjust the brightness level to set the brightness of the image to be downloaded.



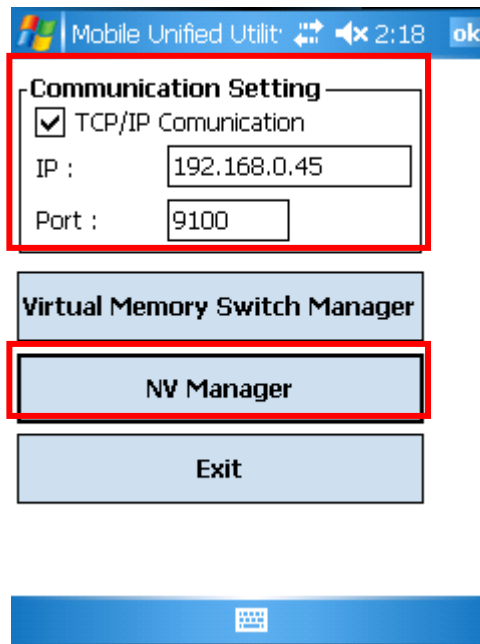
- 7) Click the “Download” button to download the image(s).
Start address is “00”.



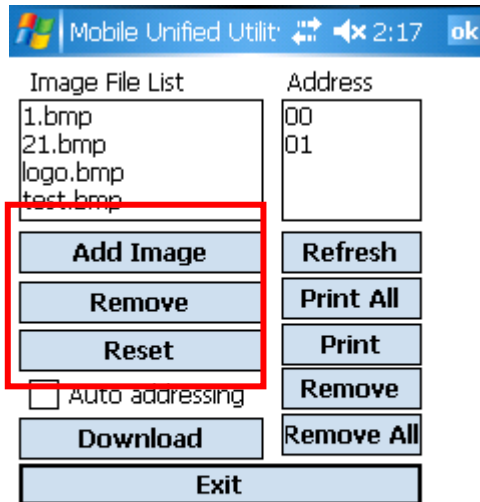
- 8) When downloading is complete, the saved address numbers appear in the “Used address list”.

4-2 When Using on a PDA

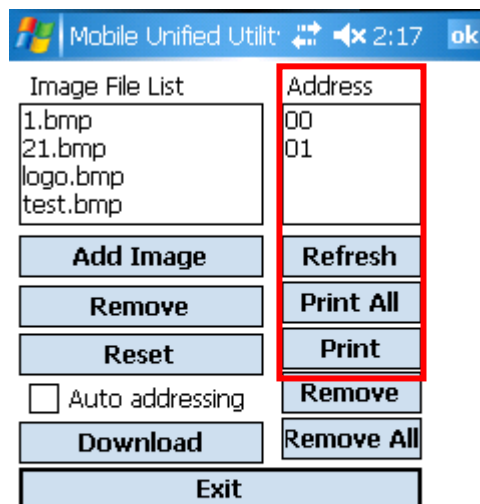
- 1) Turn on the printer power.
 - 2) Prepare the Unified Utility executable file to be used on the PDA.
The executable file varies according to CPU and can be found on the enclosed CD.
 - **ARMV4: Mobile Unified Utility for PPC armv4 ver 2.x.x.exe**
 - **ARMV4I: Mobile Unified Utility for PPC armv4i ver 2.x.x.exe**
- ※ Latest file versions can be downloaded from the BIXOLON website (www.bixelon.com).
- 3) Prepare the image file on the PDA (e.g. Main.bmp)
 - 4) Run the Unified Utility executable file.
 - 5) Select "TCP/IP Communication" and click the "NV Manager" button.
Refer to the Network Connection Manual regarding the TCP/IP setting (may vary according to device).



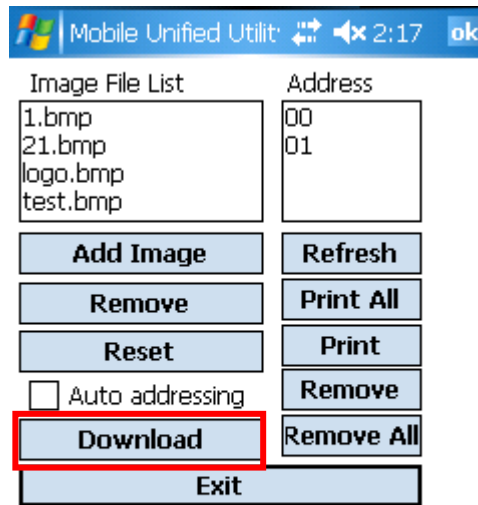
- 6) Click the “Add Image” button to add the desired image(s) to the image list.
Click the “Remove” button to delete selected image(s), and click the “Reset” button to make modifications.



- 7) The “Used address list” contains the address numbers of saved images.
The following buttons can be used to handle saved images.
- “Print” Button: Prints selected image(s)
 - “Print All” Button: Prints all images in the list
 - “Reset” Button: Delete all images



8) Click the “Download” button to download the image(s).
Start address is “00”.



9) When downloading is complete, the saved address numbers appear in the “address”.

5. Support

you should download the latest firmware from our website,
(http://www.bixolon.com/_eng/download_center/downloadcenter.asp)

you can visit our website,
(http://www.bixolon.com/_eng/servies_center/qna/main_list.asp)
and get the support.