

**BIXOLON®**

**Bluetooth Connection Manual**  
**TX / DX / DL / XD / XL / XT**  
**Series**

---

**Ver. 1.01**

[www.bixolon.com](http://www.bixolon.com)

# Copyright

© BIXOLON Co., Ltd. All rights reserved.

This user manual and all property of the product are protected under copyright law. It is strictly prohibited to copy, store, and transmit the whole or any part of the manual and any property of the product without the prior written approval of BIXOLON Co., Ltd.

The information contained herein is designed only for use with this BIXOLON product. BIXOLON is not responsible for any direct or indirect damages, arising from or related to use of this information.

- The BIXOLON logo is the registered trademark of BIXOLON Co., Ltd.
- All other brand or product names are trademarks of their respective companies or organizations.

BIXOLON Co., Ltd. maintains ongoing efforts to enhance and upgrade the functions and quality of all our products.

In the following, product specifications and/or user manual content may be changed without prior notice.

# Caution

Some semiconductor devices are easily damaged by static electricity. You should turn the printer "OFF", before you connect or remove the cables on the rear side, in order to guard the printer against the static electricity. If the printer is damaged by the static electricity, you should turn the printer "OFF".

# Table of Contents

|   |           |
|---|-----------|
| <b>1. Manual Information</b> .....                | <b>4</b>  |
| <b>2. Precautions</b> .....                       | <b>4</b>  |
| <b>3. Bluetooth Connection Instructions</b> ..... | <b>5</b>  |
| 3-1 PIN Code Paring Instruction .....             | 5         |
| 3-2 Just Works Paring Instruction .....           | 9         |
| 3-3 Numeric Comparison Paring Instruction .....   | 11        |
| 3-4 Passkey Entry Paring Instruction .....        | 15        |
| <b>4. Bluetooth Setting Instruction</b> .....     | <b>19</b> |
| <b>5. Troubleshooting</b> .....                   | <b>23</b> |

# **1. Manual Information**

This Bluetooth Connection Manual provides information on the connection of Bluetooth-enabled iOS or Android Host devices with the printer.

# **2. Precautions**

- 1) To connect the printer with another Host device via Bluetooth, the Host devices must be within 100m of one another. The connection is broken if the distance between devices exceeds 100m.
- 2) The maximum separating distance may be shortened if transmission obstacles, such as cement walls, are present.
- 3) If a device (such as a microwave oven, wireless LAN, etc.) that uses the same frequency is present, transmission may be interrupted. Separate the printer and Bluetooth-enabled device from such interrupting devices by a distance of at least 5m.

## 3. Bluetooth Connection Instructions

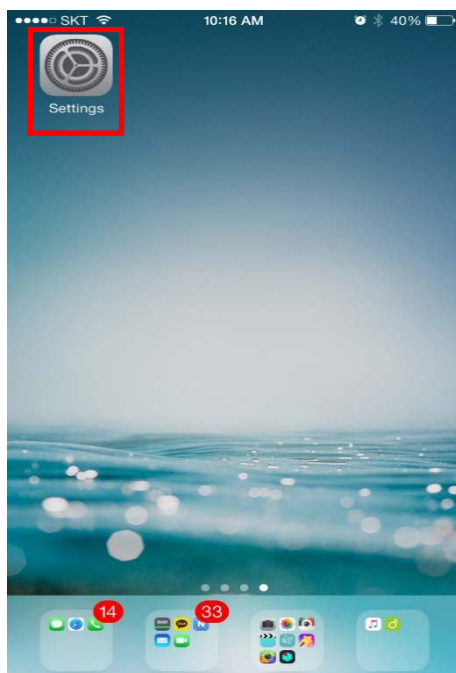
This manual focuses on the use of the following Host devices.  
For other Host devices, please refer to the relevant Host device manual.

### 3-1 PIN Code Paring Instruction

- Use Pin Code for verification(Legacy Pairing) instead of SSP.

#### 3-1-1 iOS Mode

1) Select the  icon.

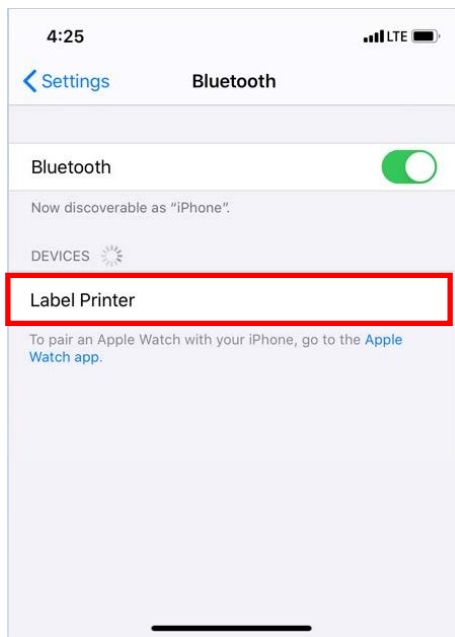


2) Select "Bluetooth".

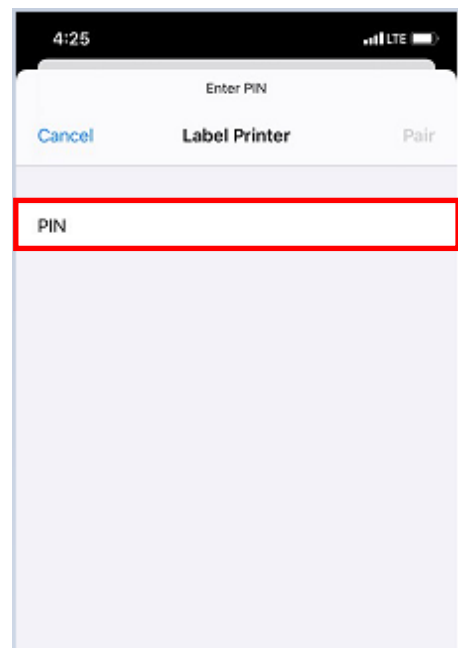


## Bluetooth Connection Manual

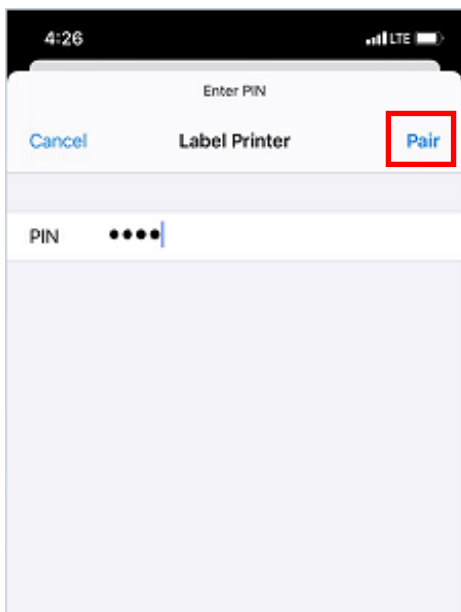
3) Select the printer to connect.



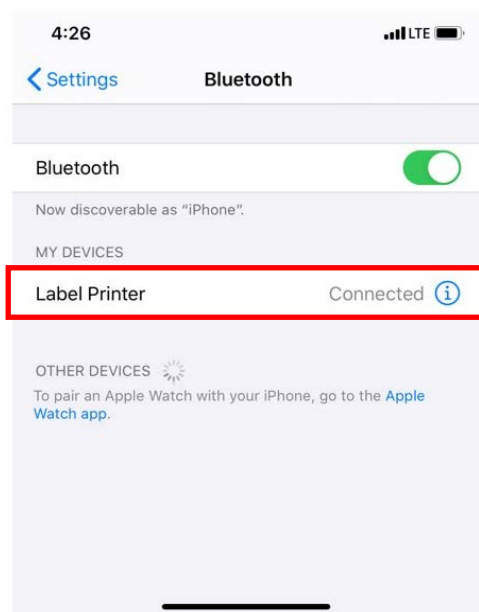
4) Enter Pin Code. (default : 0000)



5) Select "Pair".



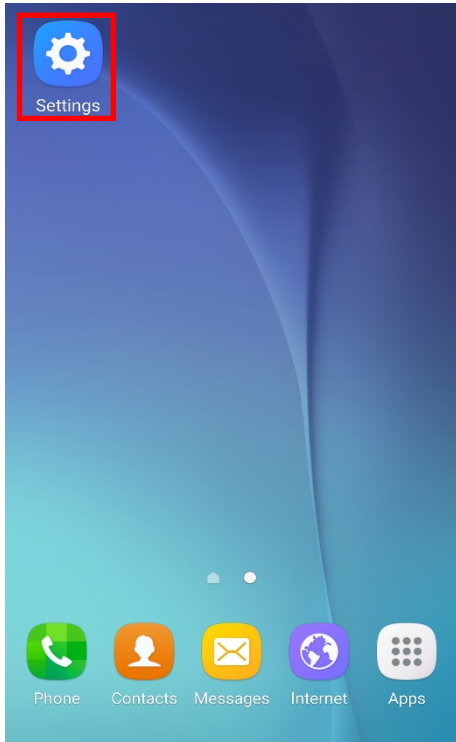
6) Bluetooth communication is available.



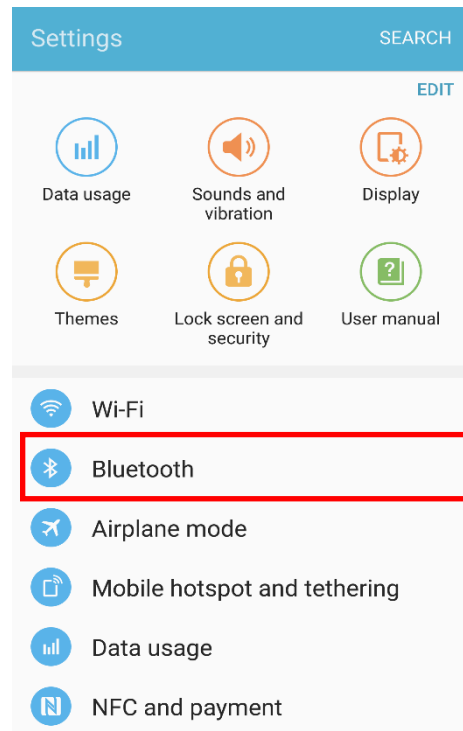
# Bluetooth Connection Manual

## 3-1-2 Android Mode

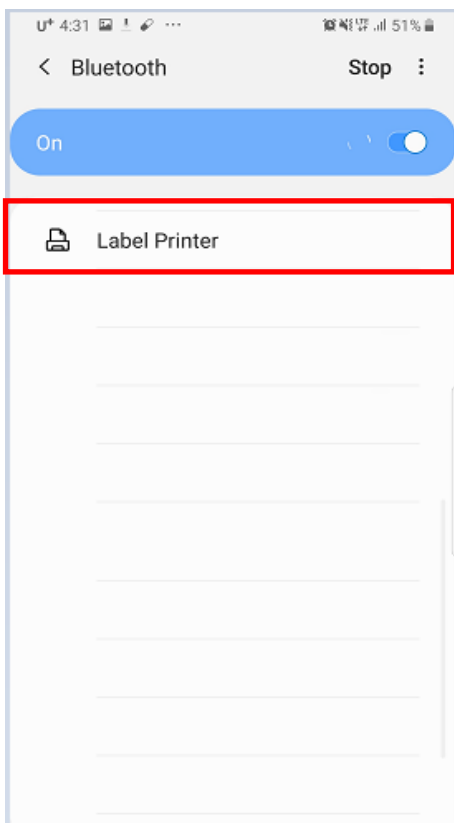
1) Select the  icon.



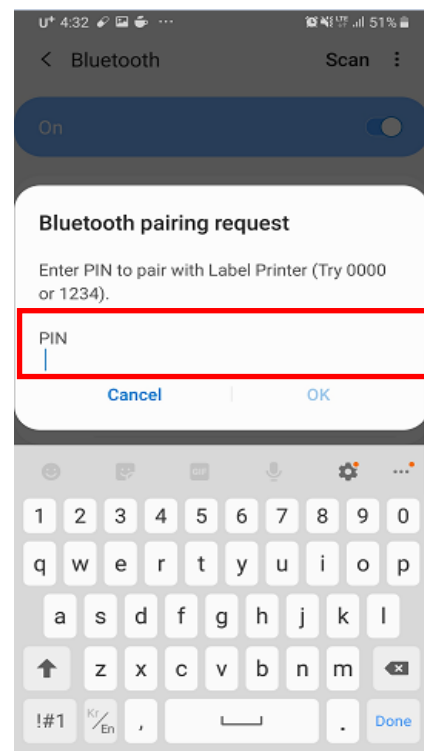
2) Select "Bluetooth".



3) Select the printer to connect.

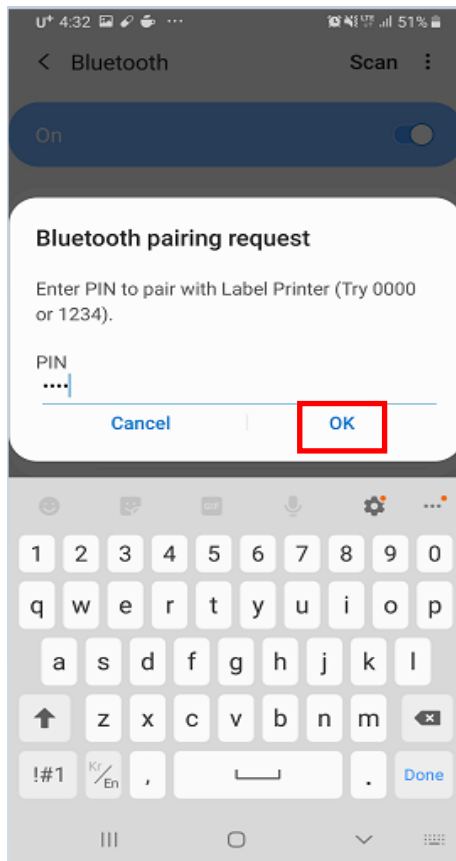


4) Enter Pin Code. (default: 0000)

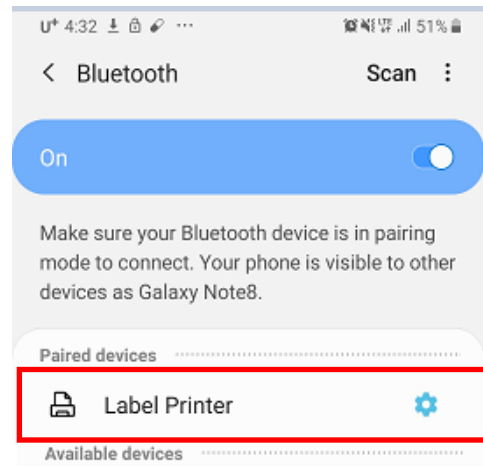


## Bluetooth Connection Manual

5) Select "OK".



6) Bluetooth communication is available.



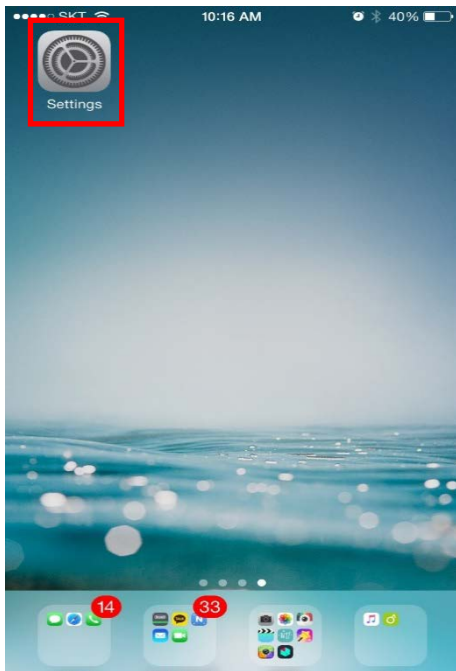


## 3-2 Just Works Pairing Instruction

- Designed for situation where one (or both) of the pairing Host device has neither a display nor keyboard for entering digits (e.g. Bluetooth headset). it does not verify any for pairing.

### 3-2-1 iOS Mode

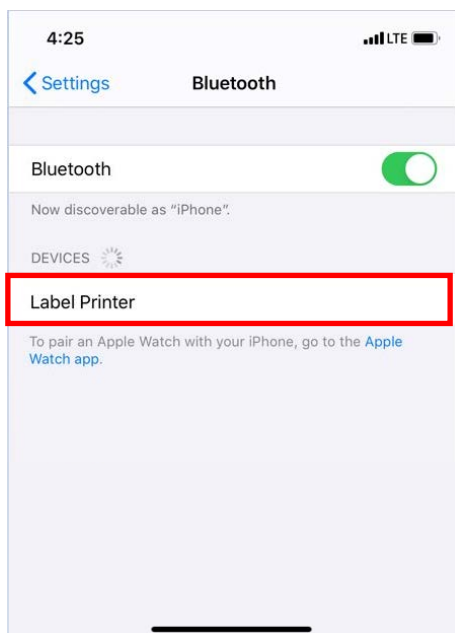
1) Select the  icon.



2) Select "Bluetooth".



3) Select the printer to connect.

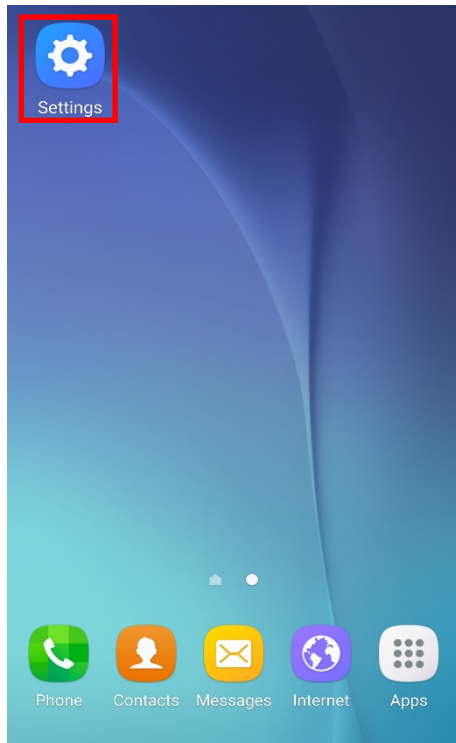


4) Bluetooth communication is available.

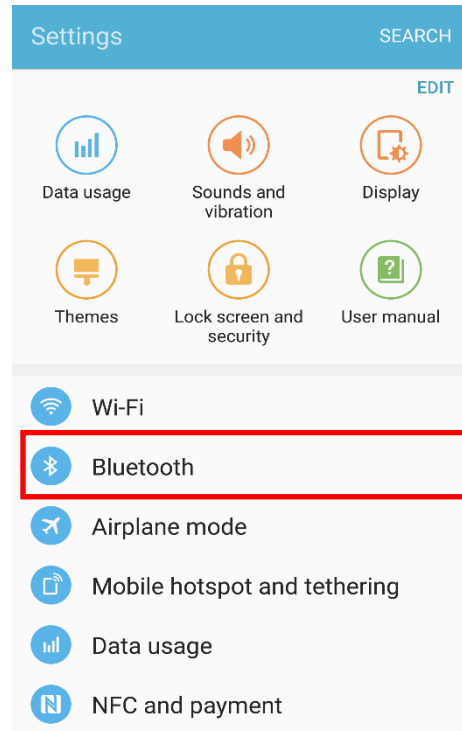


## 3-2-2 Android Mode

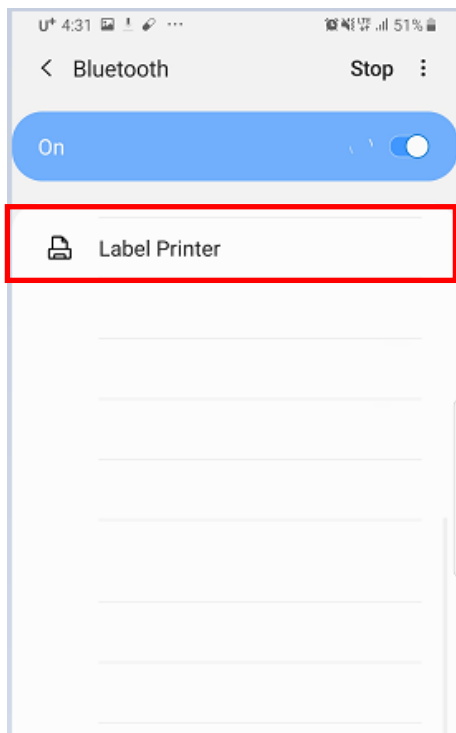
1) Select the  icon.



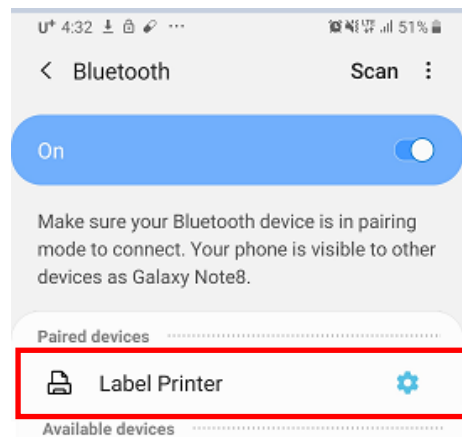
2) Select "Bluetooth".



3) Select the printer to connect.



4) Bluetooth communication is available.



## 3-3 Numeric Comparison Pairing Instruction

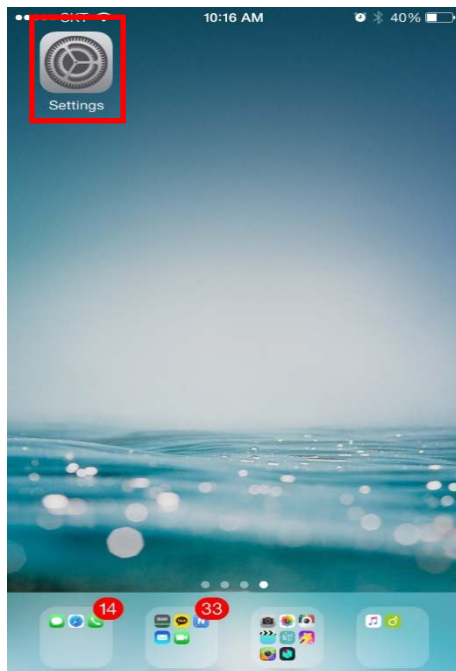
- Numeric Comparison: Designed for situation where Host device and printer are capable of displaying a six-digit number and allowing user to enter “yes” or “no” response for pairing.



This function is supported on LCD model only.

### 3-3-1 iOS Mode

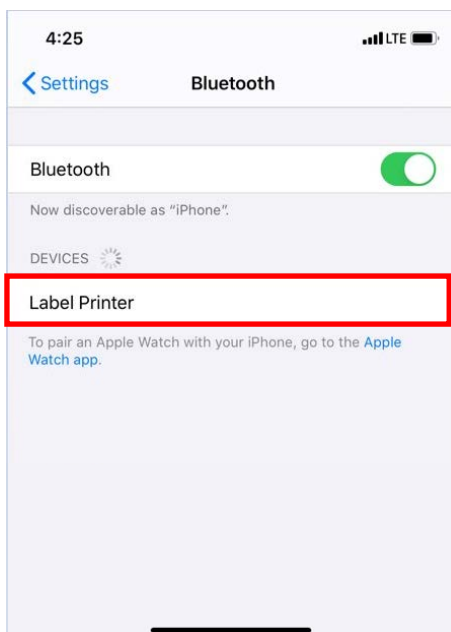
1) Select the  icon.



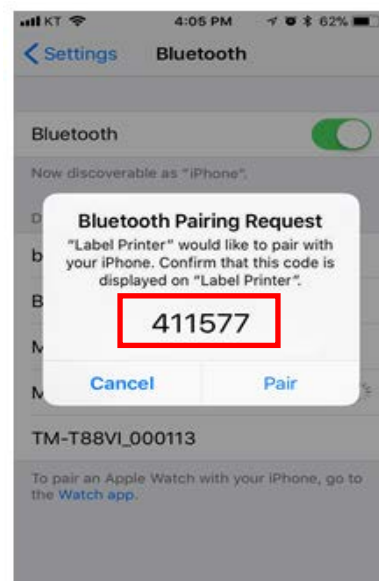
2) Select “Bluetooth”.



3) Select the printer to connect.

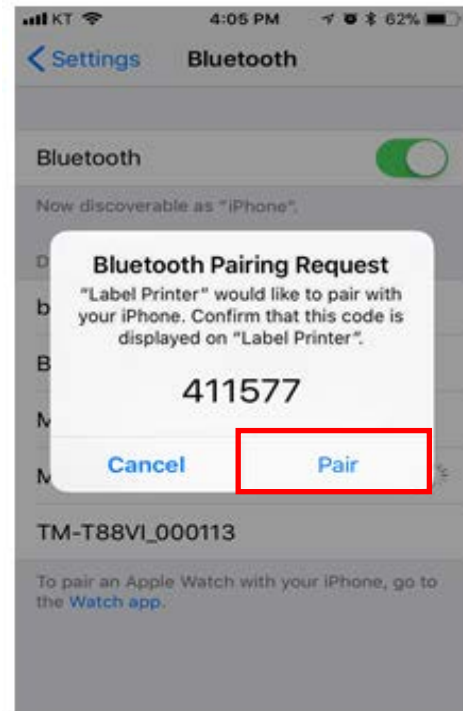
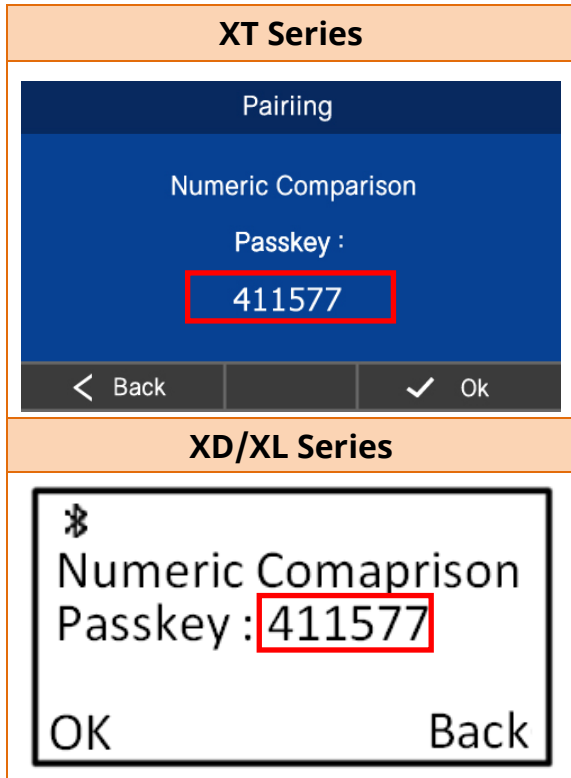


4) Check the code on the Host device. (6 characters long)

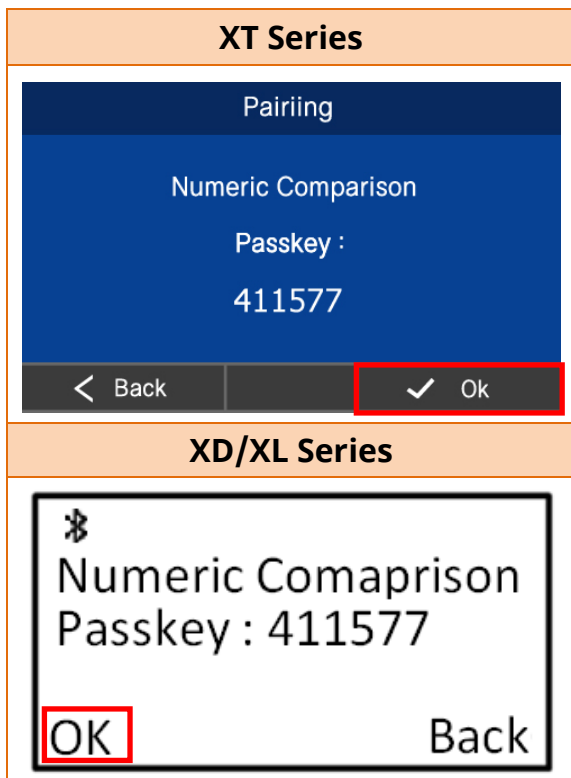


## Bluetooth Connection Manual

- 5) Confirm the code displayed on Printer. 6) Press the 'Pair' button, if two codes are matched.

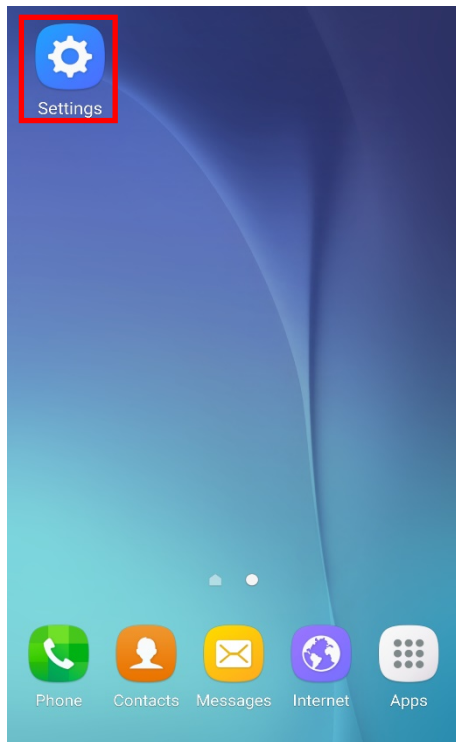


- 7) Press the 'Ok' button, if two codes are matched. 8) Bluetooth communication is available.

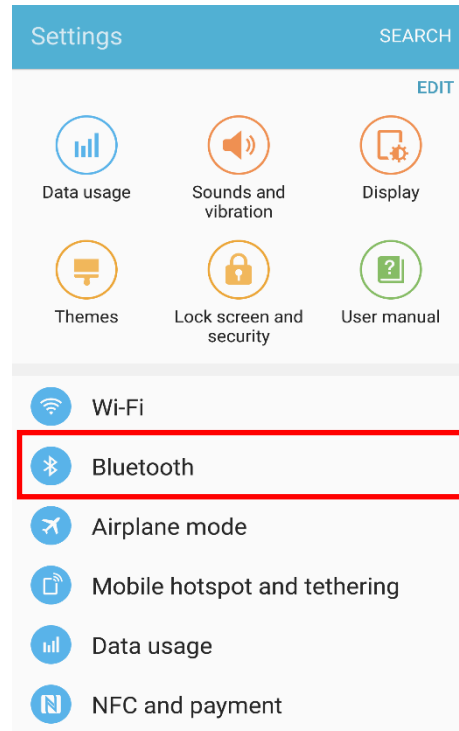


## 3-3-2 Android Mode

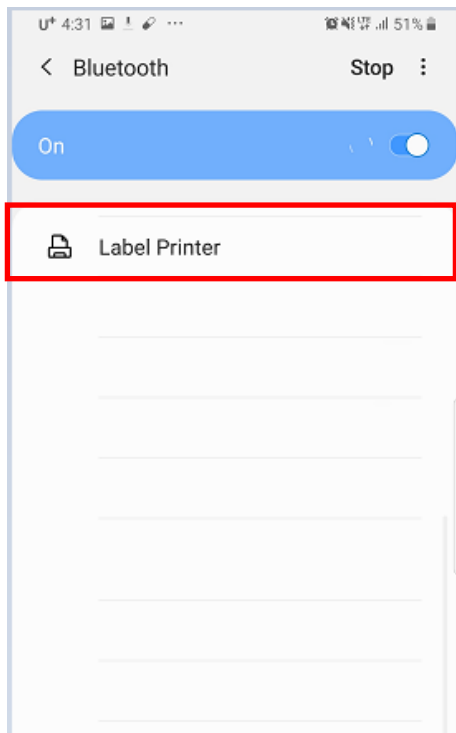
1) Select the  icon.



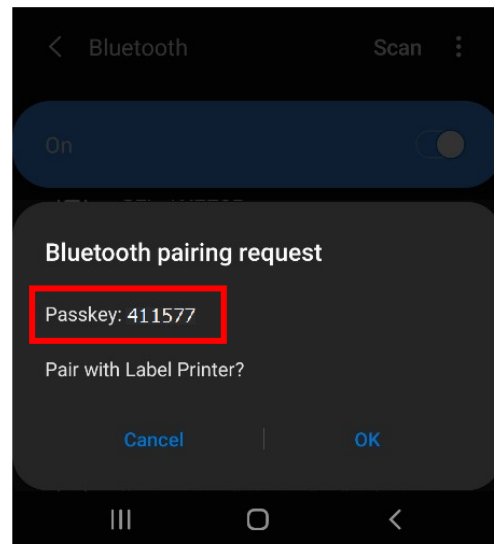
2) Select "Bluetooth".



3) Select the printer to connect.

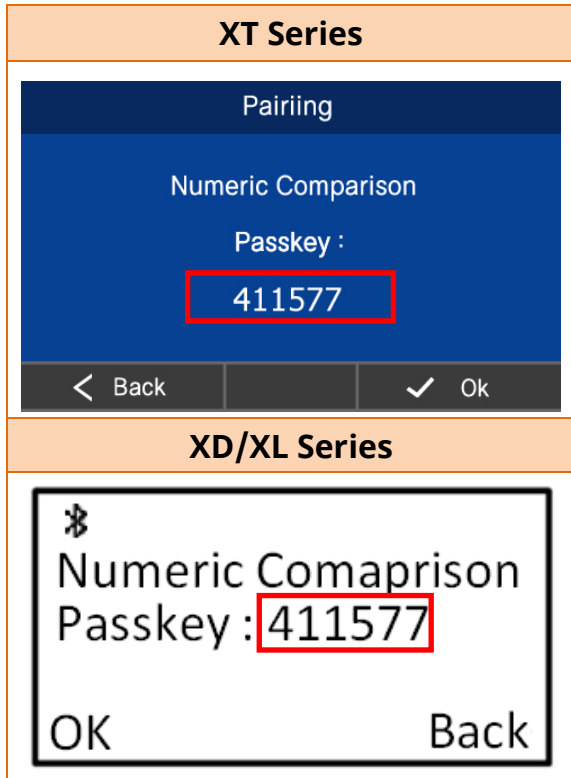


4) Check the code on the Host device. (6 characters long)

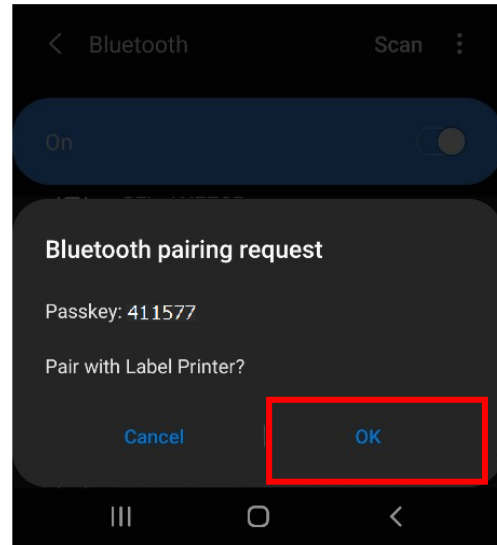


## Bluetooth Connection Manual

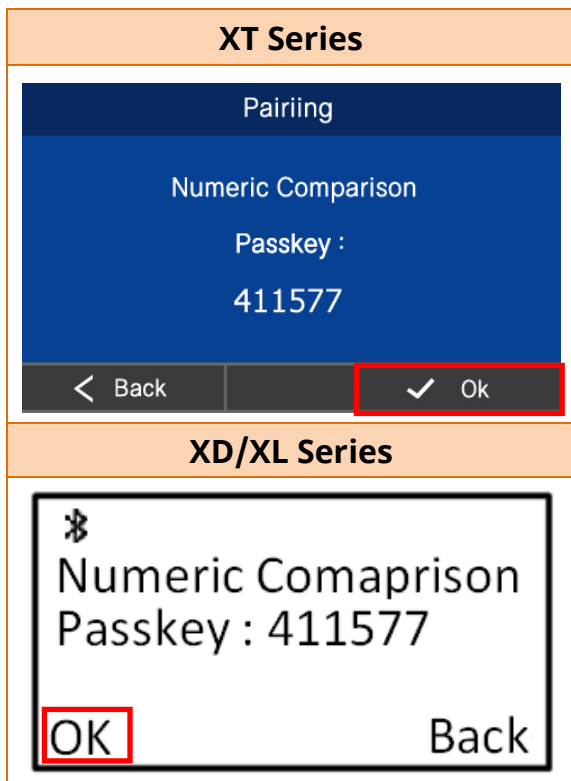
5) Confirm the code displayed on Printer.



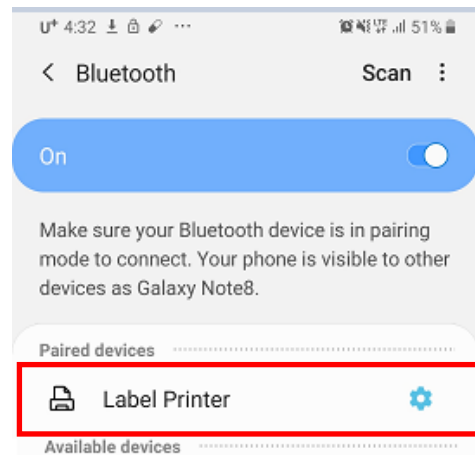
6) Press the 'OK' button, if two codes are matched.



7) Press the 'Ok' button, if two codes are matched.



8) Bluetooth communication is available.



## 3-4 Passkey Entry Pairing Instruction

- Designed for situation where Host device and printer are capable of displaying a six-digit number and allowing user to enter digits to verify and pairing.



This function is supported on LCD model only.

### 3-3-1 iOS Mode

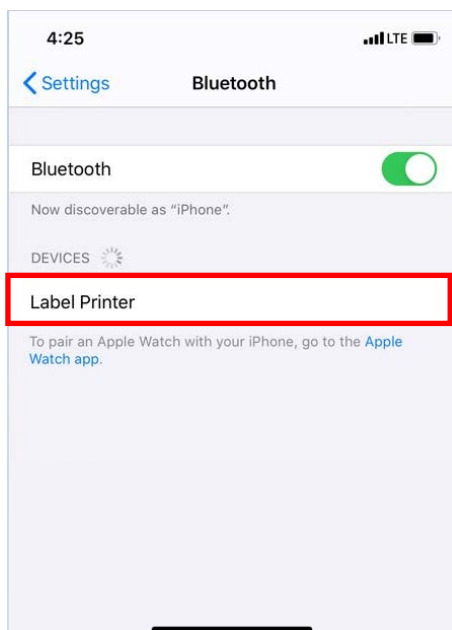
1) Select the  icon.



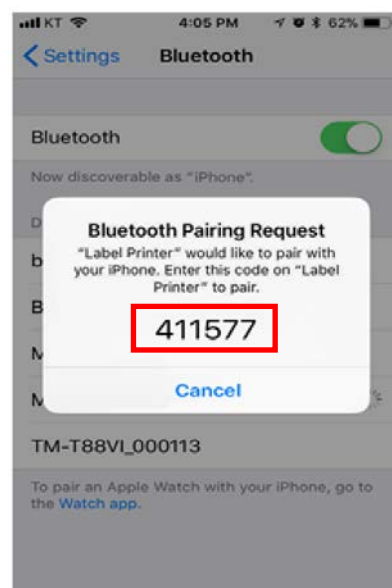
2) Select "Bluetooth".



3) Select the printer to connect.

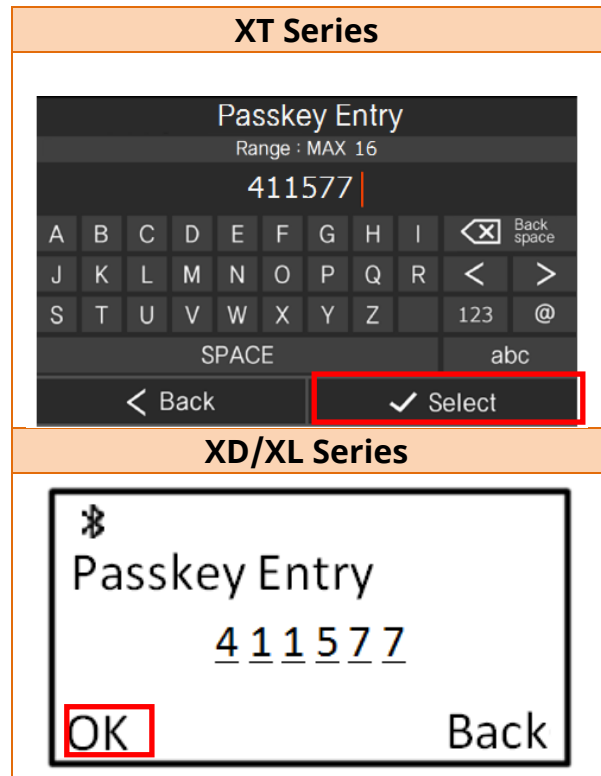
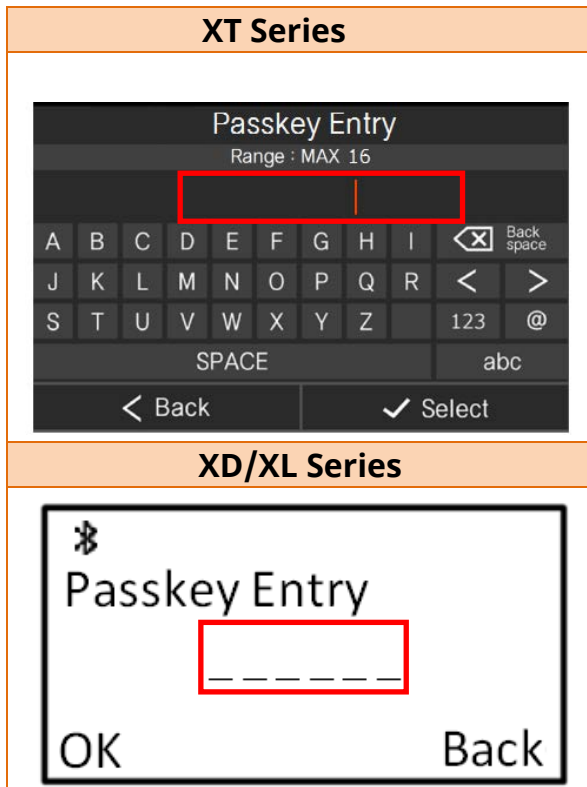


4) Check the code on the Host device.  
(6 characters long)

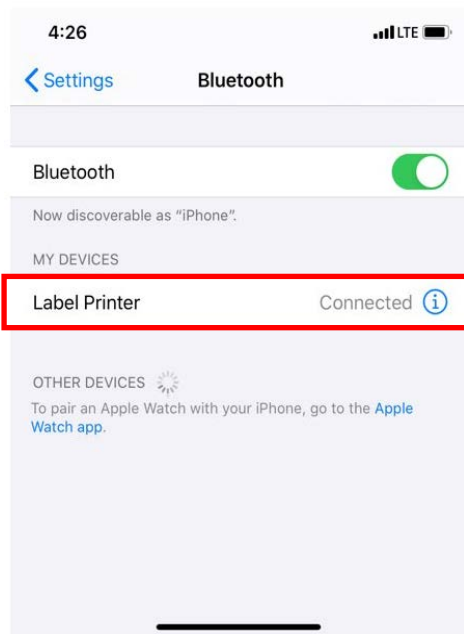


## Bluetooth Connection Manual

- 5) Enter six-digit code. (6 characters long)    6) Press the 'Select' or 'Ok' button.



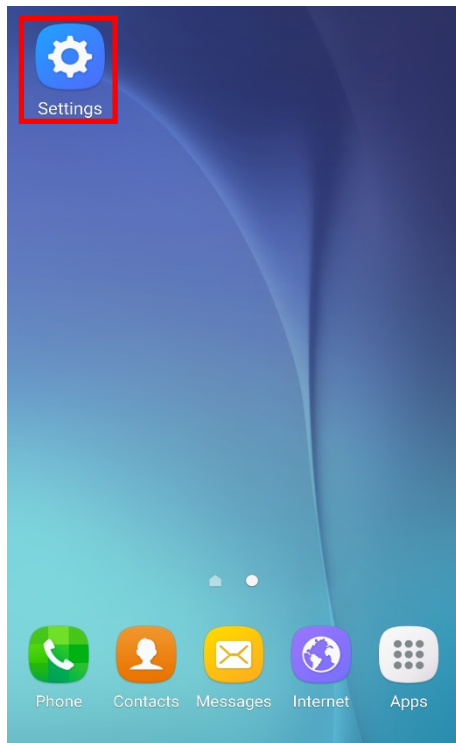
- 7) Bluetooth communication is available.



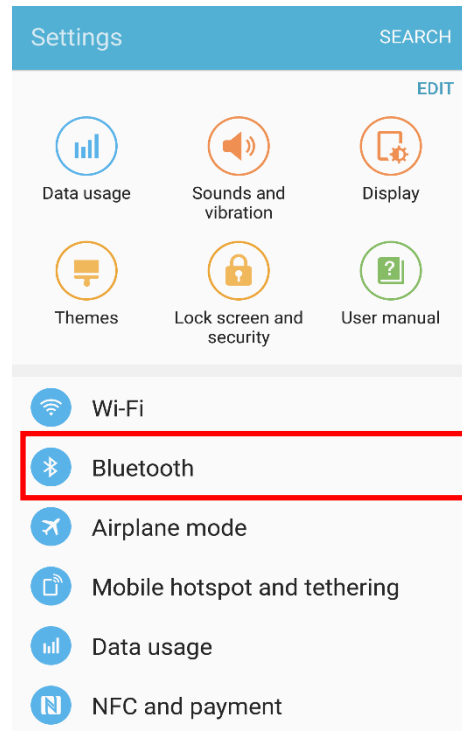


## 3-3-2 Android Mode

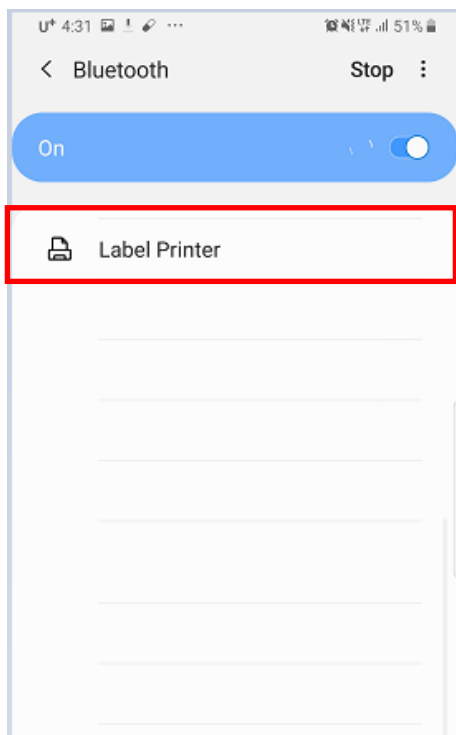
1) Select the  icon.



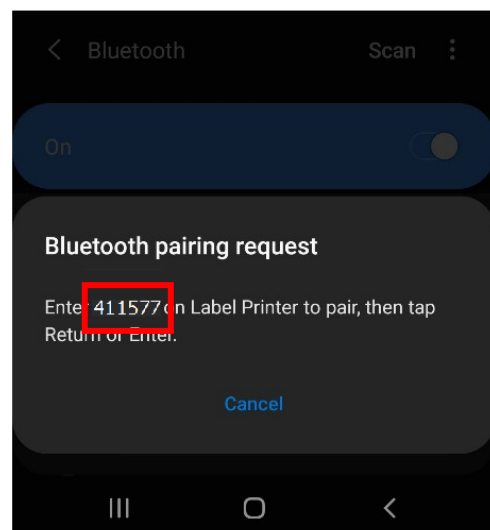
2) Select "Bluetooth".



3) Select the printer to connect.

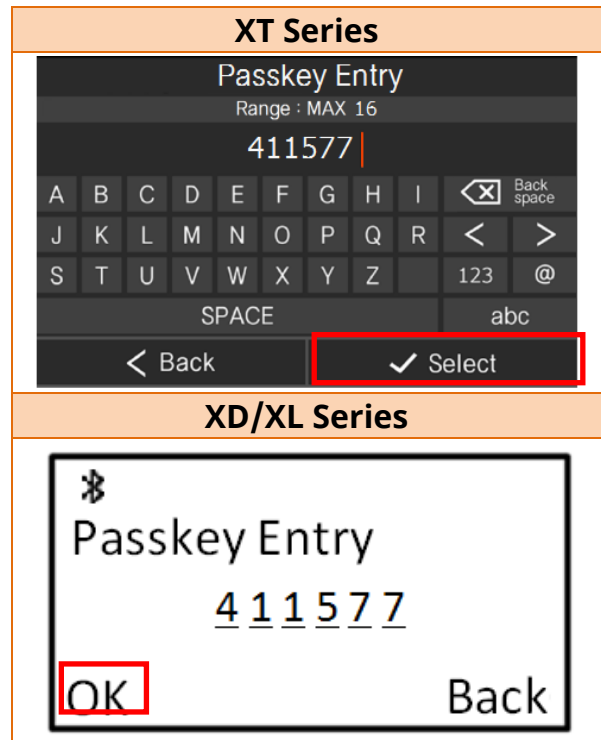
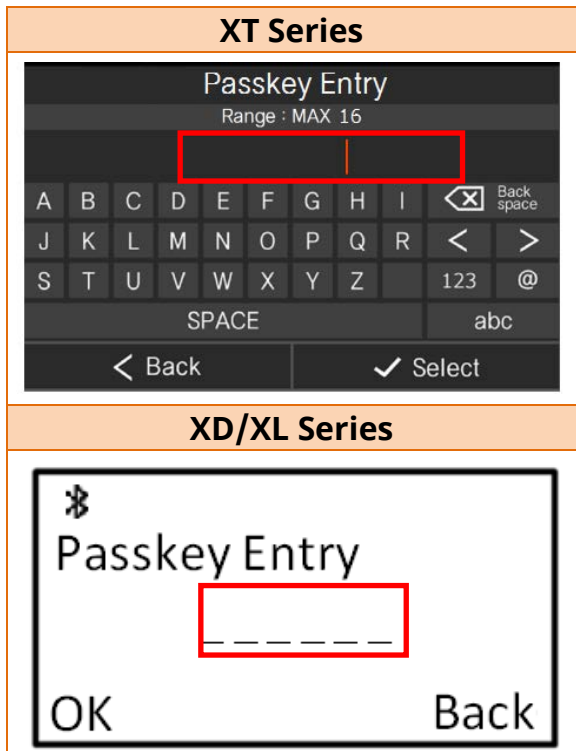


4) Check the code on the Host device.  
(6 characters long)

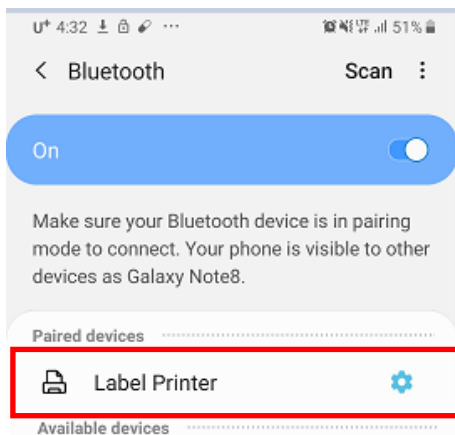


## Bluetooth Connection Manual

- 5) Enter six-digit code. (6 characters long)      6) Press the 'Select' or 'Ok' button.



- 7) Bluetooth communication is available.



## 4. Bluetooth Setting Instruction

1) Bluetooth setting is available through Unified Label Utility.



Latest file versions can be downloaded from the BIXOLON website. ([www.bixelon.com](http://www.bixelon.com)) Please refer Software manual of Unified Label Utility Manual for more information.

2) Connect the interface cable between the printer and the PC.

(The available interfaces are Serial, Parallel, USB, Ethernet, and Bluetooth.)

3) Select the interface type and configure communication setting.

4) Click the “Connect” button. If the connection is successful, the message “Success open port” appears and the buttons are activated. If a printer is not connected, the error message “Cannot open port! Please check printer and cable” appears.

Unified Label Utility-II (Version 2.1.8)

Interface Type

Serial  Parallel  USB

Ethernet  Bluetooth

Communication Setting

LPT Port: LPT1

COM Port: COM3

Baud Rate: 115200

Data Bits: 8

Parity: None

Stop Bits: 1

IP: 192 . 168 . 0 . 91

Port: 9100

Connect Disconnect

User Setting

Configure Printer Setting

Configure Print Quality

Calibration Setting Manager

File Transfer

PCX File Downloader

File Transfer

Printer Tool

Printer Tool

Communication Tool

SLCS Test Tool

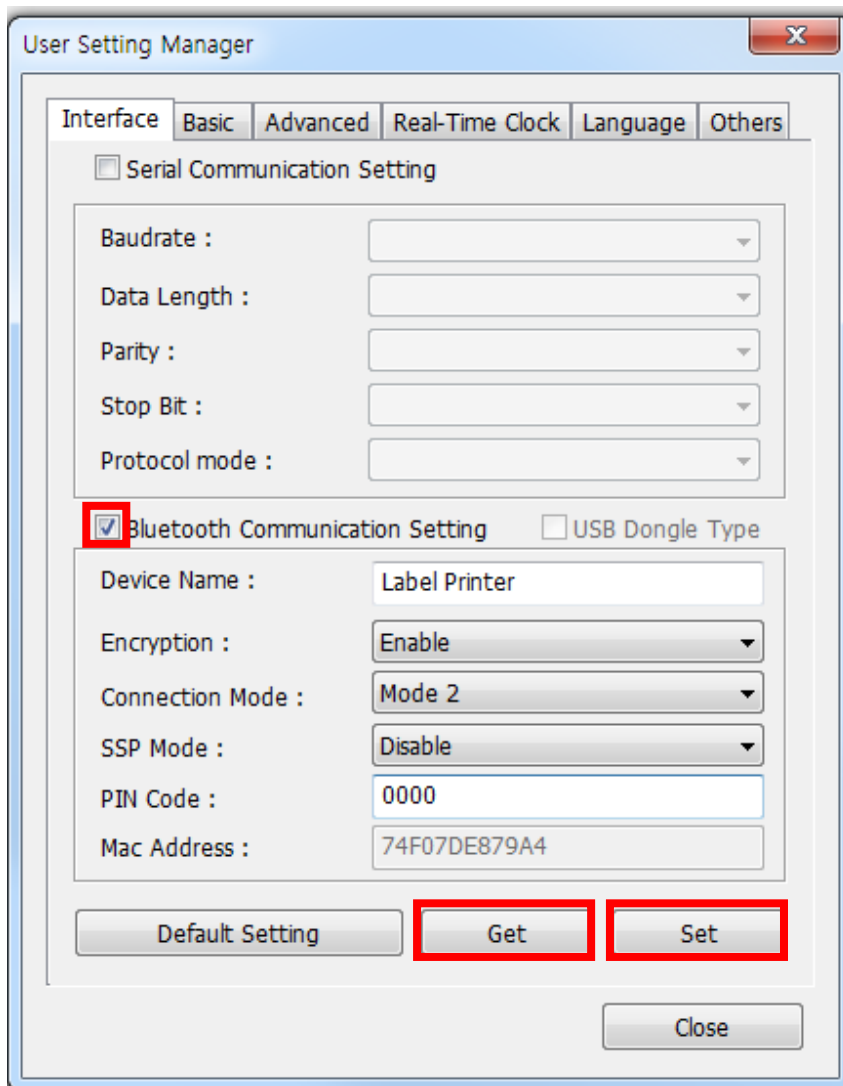
RFID

Set Configuration Write/Read

EXIT

Copyright (C) BIXOLON Co., Ltd. All rights reserved.

- ① Click the “Configure Printer Setting” button.



- ② Click the “Interface” tab.
- ③ Select the checkbox of the interface to be configured between serial and Bluetooth.
- ④ Click the “Get” button and check the printer settings.
- ⑤ After setting the desired functions, click the “Set” button to store settings.

### ⑥ Setting Menu Explanation

| List   | Explanation   |
|--|---|
| <b>Device Name</b>                                 | <p><b>Explanation</b><br/>Name of Bluetooth device</p>  |
| <b>Encryption (Authentication &amp;Encryption)</b> | <p><b>Explanation</b><br/>Setting Bluetooth authentication and encryption function</p> <p><b>Default Value</b><br/>Enable</p> <p><b>Variable Value</b><br/>1) Enable : Use authentication and encryption for Bluetooth connections and data transfer<br/>2) Disable : Use not authentication and encryption for Bluetooth connection and data transfer</p>  |
| <b>Connect Mode</b>                                | <p><b>Explanation</b><br/>Setting Bluetooth connection mode</p> <p><b>Default Value</b><br/>Mode2</p> <p><b>Variable Value</b><br/>1) Mode1 : connection possible only with the first Host device with which connection succeeds<br/>2) Mode2 : connection with all Bluetooth enabled Host device possible via use of a Pin Code<br/>3) Mode3 : connection possible only with the first Host device with which connection succeeds and searching or use of connected Host device possible</p> |

|  |  |
|--|--|
| <p align="center"><b>SSP<br/>(Secure<br/>simple<br/>pairing)</b></p> | <p><b>Explanation</b><br/>Secure simple pairing</p> <p><b>Default Value</b><br/>Disable</p> <p><b>Variable Value</b><br/>1) Disable : Use Pin Code for verification(Legacy Pairing) instead of SSP.<br/>2) Just Works : Designed for situation where one (or both) of the pairing Host device and printer has neither a display nor keyboard for entering digits (e.g. Bluetooth headset).it does not verify any for pairing.<br/>3) Numeric Comparison : Designed for situation where Host device and printer are capable of displaying a six-digit number and allowing user to enter "yes" or "no" response for pairing<br/>*This function is supported on LCD model only.<br/>4) Passkey Entry :. Designed for situation where Host devices are capable of displaying a six-digit number and allowing user into the printer to enter digits to verify and pairing.<br/>*This function is supported on LCD model only.</p> |
| <p align="center"><b>Pin Code</b></p>                                | <p><b>Explanation</b><br/>Changes required Pin Code to connect</p> <p><b>Default Value</b><br/>0000</p>  |
| <p align="center"><b>MAC<br/>Address</b></p>                         | <p><b>Explanation</b><br/>Bluetooth device MAC address</p>   |

# 5. Troubleshooting

Please follow the guide below if Bluetooth is not searched on iOS or Android Host device

1) Check whether printer is connected to other Bluetooth Host device.

Printer is not able to be found on your iOS or android Host device if it is connected to other Bluetooth Host device.





Printer is automatically connected to last iOS Host device which was connected in iOS mode. But it does not make a connection to any Host device, if user turns it on while the paper cover of it is opened.

2) Perform Self Test to check the printer is Bluetooth function on.

- When the Bluetooth function is not enabled correctly, the Bluetooth configuration on Self Test will not be printed correctly.
- Please refer the User manual for Self Test Printing.

3) For LCD models, check the top left icon on the printer's screen.

-  : When the printer does not have a Bluetooth connection with another Host device.
-  : When the printer is connected to another Host device via Bluetooth

4) You need to disconnect the connection to other Bluetooth Host device, or turn on the printer



Printer is automatically connected to last iOS Host device which was connected.

