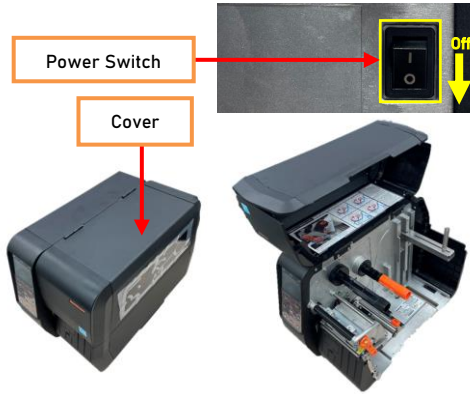
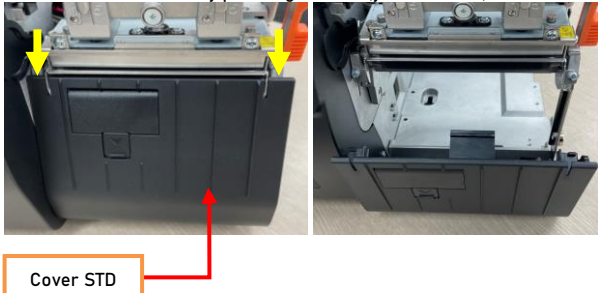


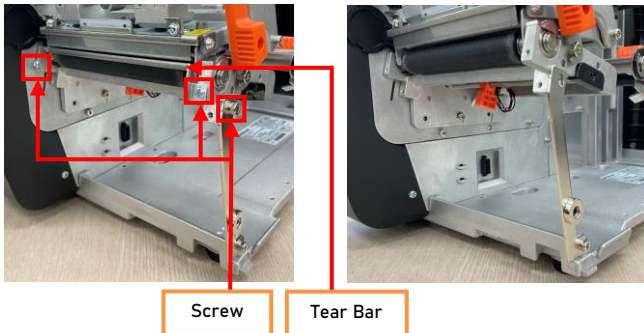
1. Turn the Power Switch Off at the rear of the Printer and open the Cover.



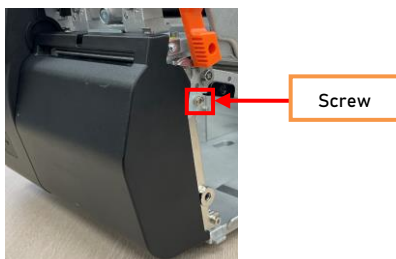
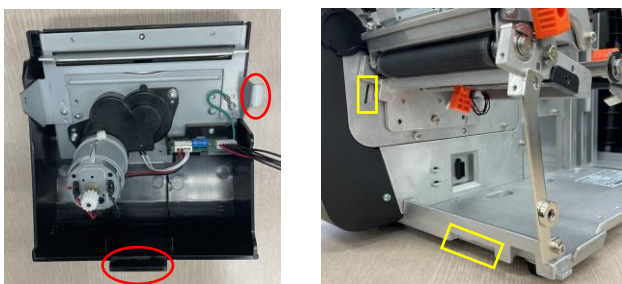
2. Disassemble the Cover STD by pressing it down (yellow arrow).



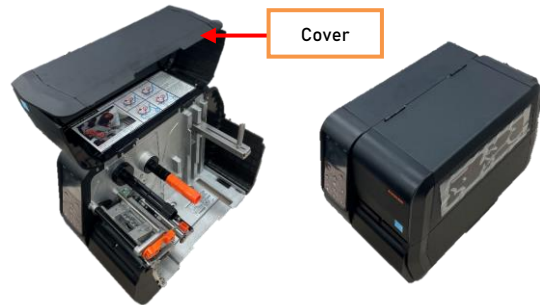
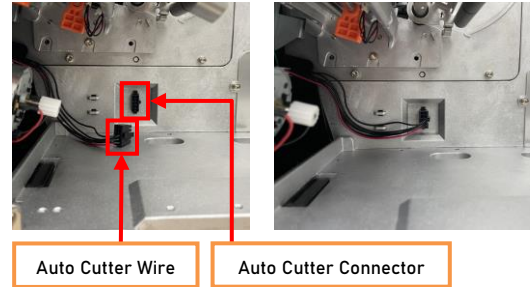
3. Loosen 3 screws and the tear bar.



4. Insert & assemble the hook on the red circle mark into the yellow mark and tighten the screw loosened in step 3.
 ※ When assembling, be careful not to pinch the wire.



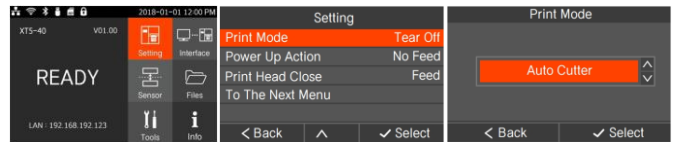
5. Insert the Auto Cutter Wire into the Auto Cutter Connector in the direction, and the close the cover.



9. In order to operate Auto-cutter, change the printer settings.

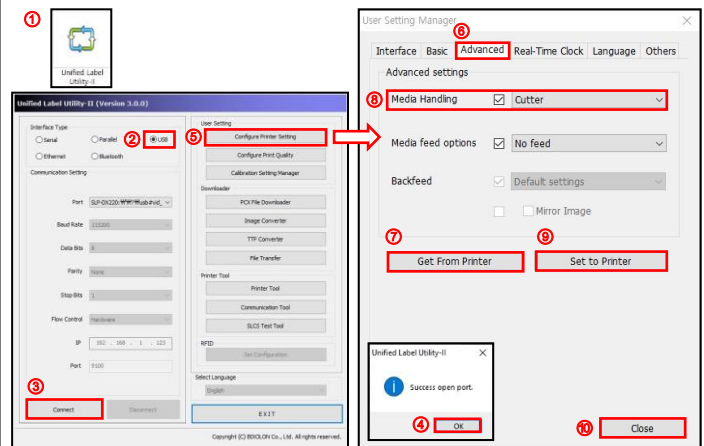
1) By using the LCD

* Setting → Print Mode → Select the Auto Cutter



2) By using the Utility

- After downloading "Unified Label Utility" from the BIXOLON Homepage (www.bixolon.com), connect the Data cable(=USB) and turn on the printer, then Change the settings in the following order.



① Launch 'Unified Label Utility'

② 'USB' Click!

③ 'Connect' Click!

④ 'OK' Click!

⑤ 'Configure Printer Setting' Click!

⑥ 'Advanced' Click!

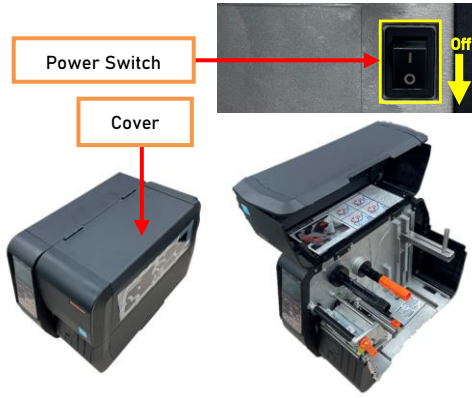
⑦ 'Get From Printer' Click!

⑧ Media Handling 'Cutter' Setting!

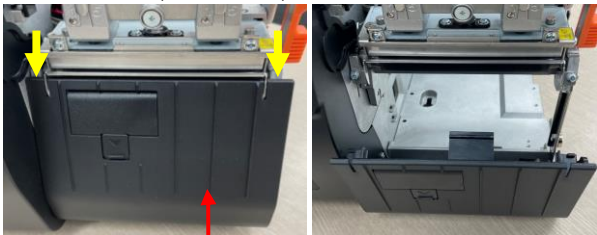
⑨ 'Set to Printer' Click!

⑩ 'Close' Click!

1. Printer 후면의 Power Switch 를 Off 하고 Cover 를 열어주십시오

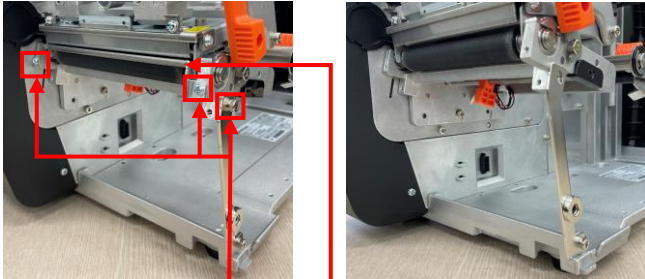


2. Cover STD 를 아래 방향(노란색 화살표)으로 눌러 분리하십시오.



Cover STD

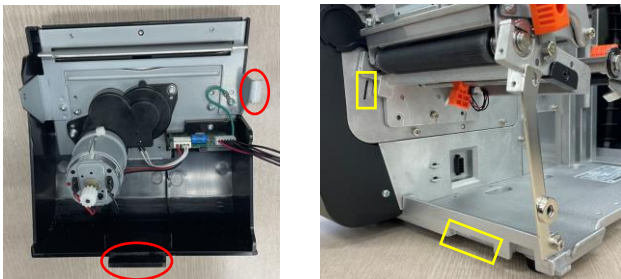
3. Screw 3 개와 Tear Bar 를 분리하십시오.



Screw

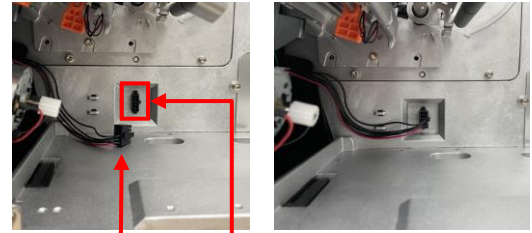
Tear Bar

4. 빨간색 원 표시 부의 Hook 를 노란색 사각형 홈에 삽입하여 조립하고 순서 3 에서 분리한 Screw 를 체결하십시오
※ 조립 시 Wire 가 끼이지 않도록 주의하십시오.



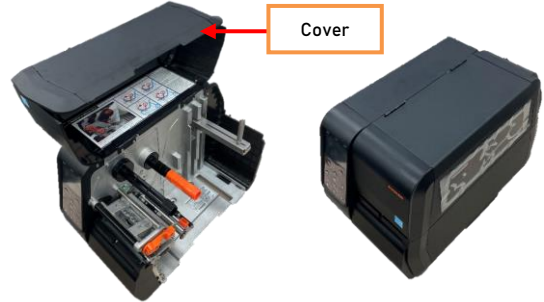
Screw

5. Auto Cutter Wire 를 방향에 맞추어 Auto Cutter Connector 에 삽입하고 Cover 를 닫아주십시오.



Auto Cutter Wire

Auto Cutter Connector



Cover

9. Auto Cutter 를 작동시키기 위해서는 프린터 설정 값을 변경해야 합니다.

1) LCD 를 사용한 설정 값 변경

* 설정 → 인쇄 모드 → 오토 커터 선택



2) 유틸리티 사용한 설정 값 변경

- 빅솔론 홈페이지(www.bixolon.com)에 접속하여 라벨 통합 유틸리티를 다운 받은 후, 통신 케이블(USB) 연결 및 Printer 의 전원을 켜 다음 하기 순서대로 설정을 변경해 주십시오.



① 'Unified Label Utility' 실행

② 'USB' 클릭!

③ '연결' 클릭!

④ '확인' 클릭!

⑤ '프린터 환경 설정' 클릭!

⑥ '고급설정' 클릭!

⑦ '프린터 설정값 가져오기' 클릭!

⑧ 매체 핸들링 '커터' 선택!

⑨ '프린터에 설정' 클릭!

⑩ '닫기' 클릭!