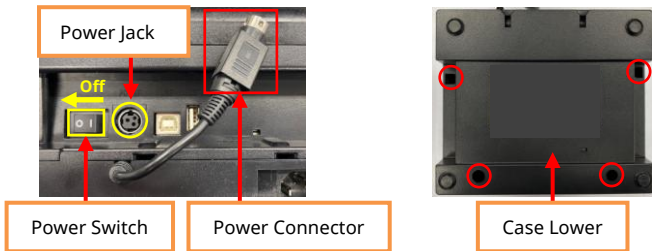
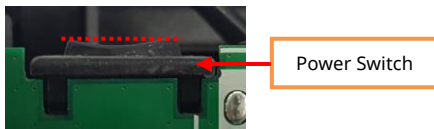


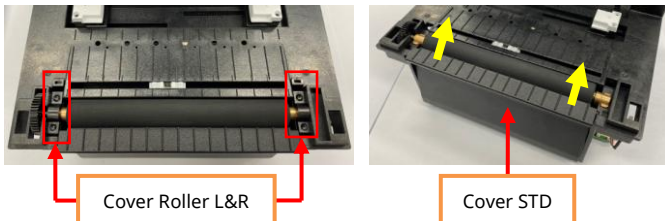
1. After the Power Switch Off at the rear of the Printer, Unplug the Power Connector from the Power Jack. Place the bottom of the Printer face the front. Remove four screws (in Red circle) using a screwdriver and disassemble the Case Lower.



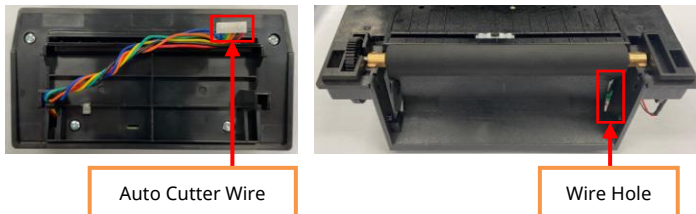
※ When disassembling the Case Lower, disassemble it while keeping the Power Switch in a horizontality. (As a red dotted line).



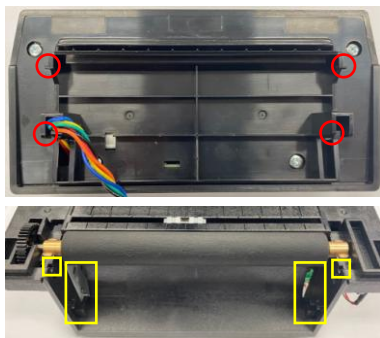
2. Open the Printer. After disassemble the Cover Roller L&R, Disassemble the Cover STD upwards (Yellow arrow).



3. Insert the Auto Cutter Wire into the Wire Hole.



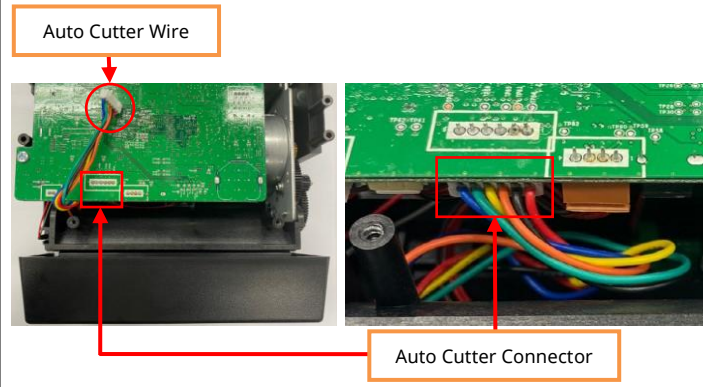
4. Engage the Hooks (red circles) with the square-shaped sockets (yellow squares) in the order from top to bottom.
※ Be careful that the Wire does not get stuck.



5. Reassemble the Cover Roller L&R that was removed in step 2.



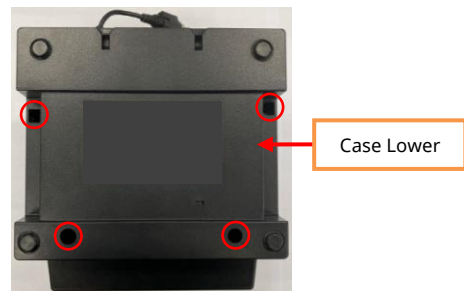
6. Place the bottom of the Printer face the front. Insert the Auto Cutter Wire into the Auto Cutter Connector (red square) in the correct direction.
※ Be careful to avoid tangling with other wires when shaping.



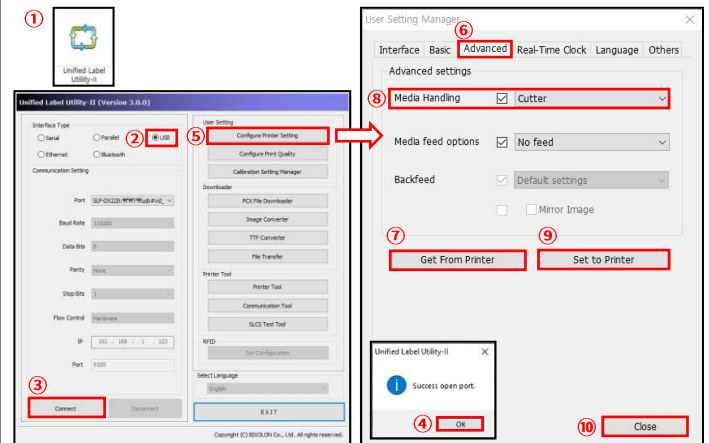
7. Put the wires (Two red squares) inside as much as possible.



8. Reassemble the Case Lower that was disassembled in step 1.
※ Be careful that the Wire does not get stuck.

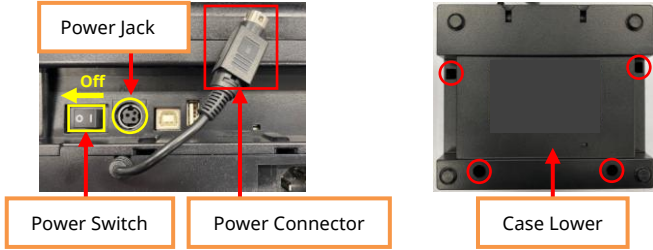


9. In order to operate the Auto Cutter, the settings must be changed through the utility. Access the Bixolon webpage (www.bixolon.com) and download the Unified Label Utility.
Connect the communication cable (USB) and Turn the Printer power On. Then, change the settings in the following order.

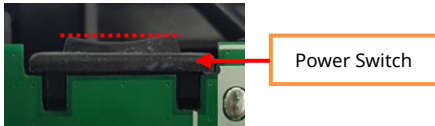


- ① Launch 'Unified Label Utility'
- ② 'USB' Click!
- ③ 'Connect' Click!
- ④ 'OK' Click!
- ⑤ 'Configure Printer Setting' Click!
- ⑥ 'Advanced' Click!
- ⑦ 'Get From Printer' Click!
- ⑧ Media Handling 'Cutter' Setting!
- ⑨ 'Set to Printer' Click!
- ⑩ 'Close' Click!

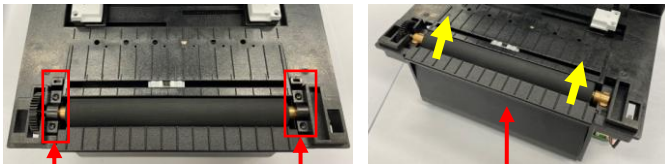
1. Printer 후면의 Power Switch 를 Off 한 후, Power Connector 를 Power Jack 에서 분리하십시오. Printer 바닥 면이 전면으로 향하게 하십시오. 십자드라이버를 사용하여 스크류 4 개소(빨간색 원)를 제거한 다음 Case Lower 를 분리하십시오.



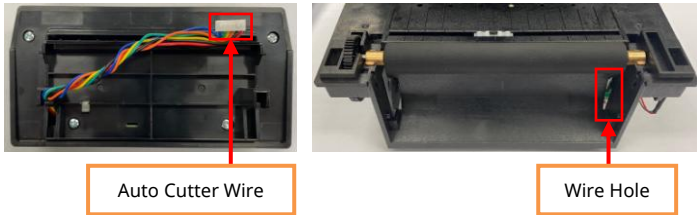
※ Case Lower 분리 시, Power Switch 를 수평상태(빨간색 점선)로 유지한 상태에서 분리하십시오.



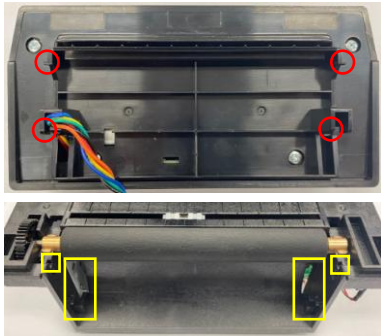
2. Printer 를 열어주십시오. Cover Roller L&R 을 분리 후, Cover STD 를 상측방향(노란색 화살표)으로 올려 분리하십시오.



3. Auto Cutter Wire 를 Wire Hole 에 삽입하십시오.



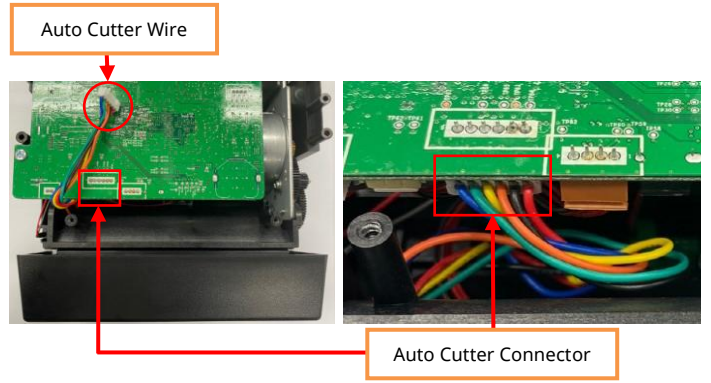
4. 빨간색 원 표시 부의 Hook 를 노란색 사각형 홈에 맞추어 상측에서 하측으로 조립하십시오.
※ 조립 시 Wire 가 끼이지 않도록 주의하십시오.



5. 순서 2 에서 분리한 Cover Roller L&R 을 재 조립하십시오.



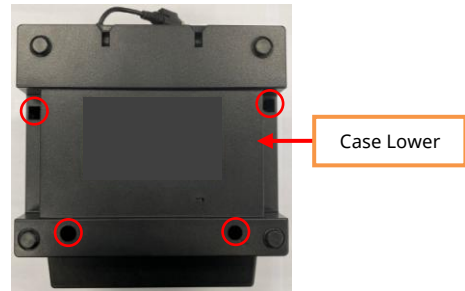
6. Printer 바닥 면이 정면으로 향하게 하십시오. Auto Cutter Wire 를 방향에 맞추어 Auto Cutter Connector(빨간색 사각형)에 삽입하십시오.
※ 다른 Wire 와 꼬이지 않게 정형 하십시오.



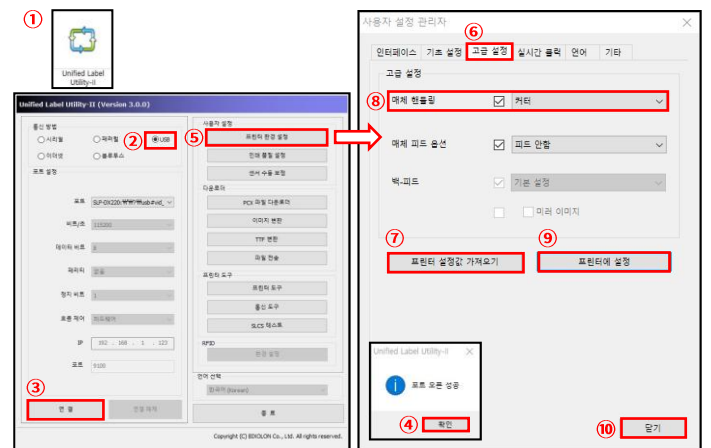
7. Wire 2 개소(빨간색 사각형)를 내측 방향으로 최대한 밀어 넣어 주십시오.



8. 순서 1 에서 분리한 Case Lower 를 재 조립하십시오.
※ 조립 시 Wire 가 끼이지 않도록 주의하십시오.



9. Auto Cutter 를 작동시키기 위해서는 유틸리티를 통해 설정값을 변경해야 합니다. 빅솔론 홈페이지(www.bixolon.com)에 접속하여 라벨 통합 유틸리티를 다운 받은 후, 통신 케이블(USB) 연결 및 Printer 의 전원을 켜 다음 하기 순서대로 설정을 변경해 주십시오.



- ① 'Unified Label Utility' 실행
- ② 'USB' 클릭!
- ③ '연결' 클릭!
- ④ '확인' 클릭!
- ⑤ '프린터 환경 설정' 클릭!
- ⑥ '고급설정' 클릭!
- ⑦ '프린터 설정값 가져오기' 클릭!
- ⑧ 매체 핸들링 '커터' 선택!
- ⑨ '프린터에 설정' 클릭!
- ⑩ '닫기' 클릭!