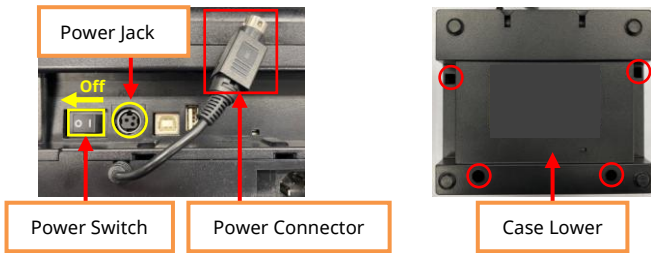
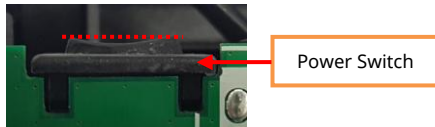


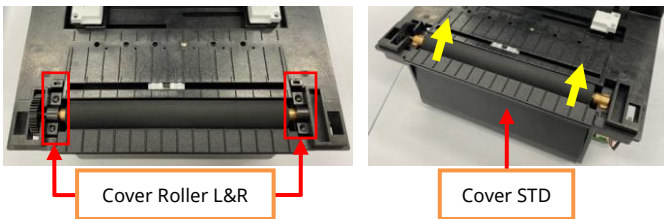
1. After the Power Switch Off at the rear of the Printer, Unplug the Power Connector from the Power Jack. Place the bottom of the Printer face the front. Remove four screws (in Red circle) using a screwdriver and disassemble the Case Lower.



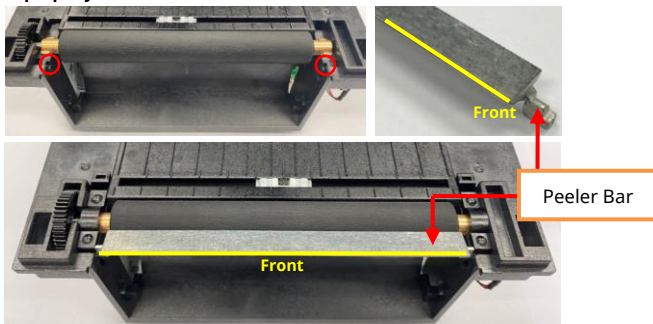
※ When disassembling the Case Lower, disassemble it while keeping the Power Switch in a horizontality. (As a red dotted line).



2. Open the Printer. After disassemble the Cover Roller L&R, Disassemble the Cover STD upwards (Yellow arrow).



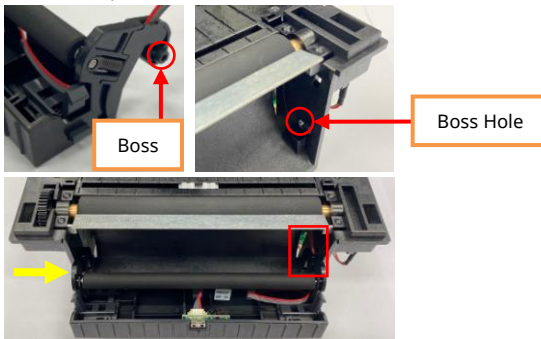
3. Assemble the Peeler Bar by aligning the direction to the square hole below (Red Circles). Then, reassemble the Cover Roller L&R that was removed in step 2.
※ Be careful to install the Peeler Bar correctly. Otherwise, the Peeler will not work properly.



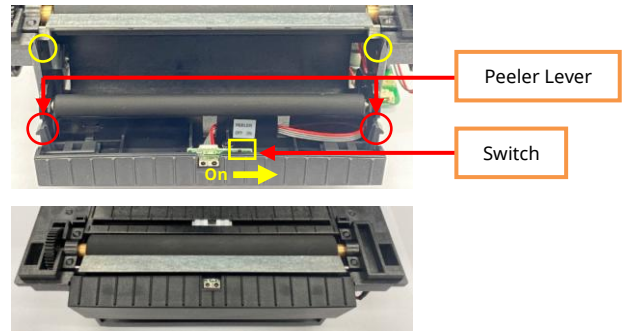
4. Insert the Peeler Wire into the Wire Hole.



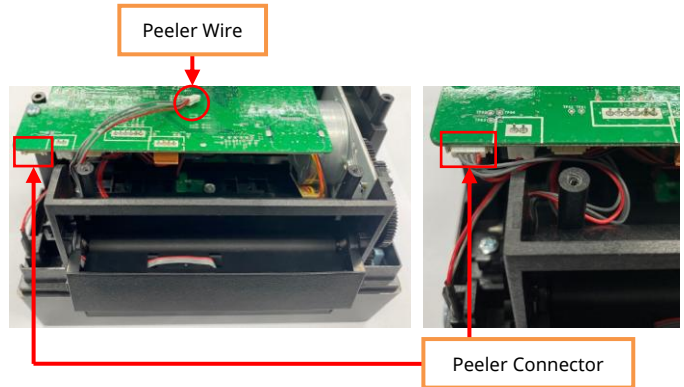
5. With the Wire inserted, fit the right Boss of the Peeler to the Boss Hole as shown below. Also, fit the left one to the Boss Hole.



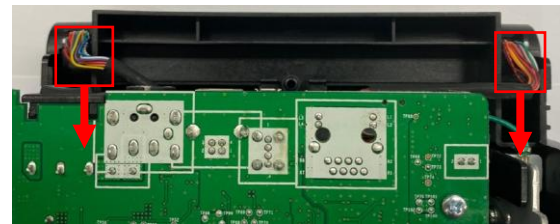
6. Turn the Switch On as shown below. Then, engage the Peeler Levers with the sockets (yellow circles) to close so that they make a clicking sound.
※ If the Levers are not engaged correctly, try again after repeating steps 4 and 5.



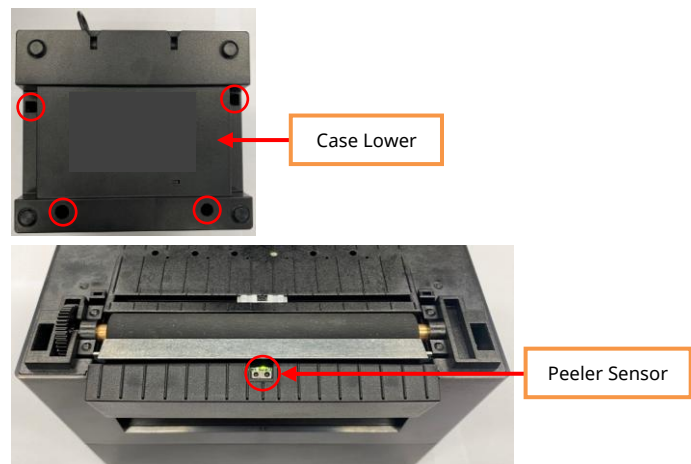
7. Place the bottom of the Printer face the front. Insert the Peeler Wire to the Peeler Connector (red square) in the correct direction.
※ Be careful to avoid tangling with other wires when shaping.



8. Put the wires (Two red squares) inside as much as possible.

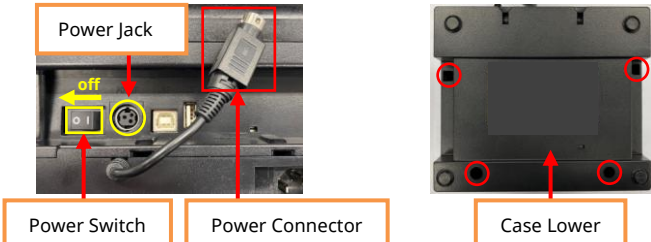


9. Reassemble the Case Lower that was removed in step 1. Then, connect the power supply and turn the power on to check if the Peeler Sensor LED is green when turned on.

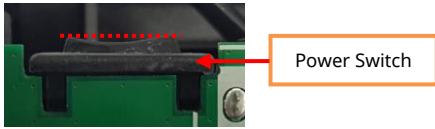


※ See the User Manual for how to supply paper.

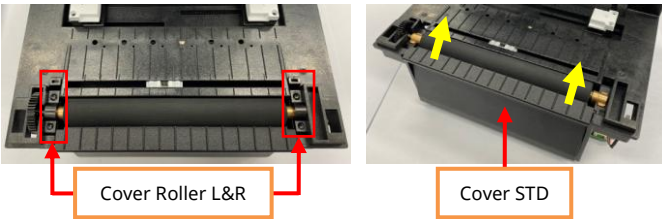
1. Printer 후면의 Power Switch 를 Off 한 후, Power Connector 를 Power Jack 에서 분리하십시오. Printer 바닥 면이 전면으로 향하게 하십시오. 십자드라이버를 사용하여 스크류 4 개소(빨간색 원)를 제거한 다음 Case Lower 를 분리하십시오.



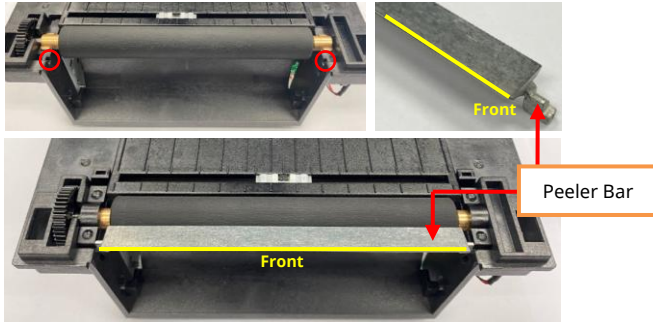
※ Case Lower 분리 시, Power Switch 를 수평상태(빨간색 점선)로 유지한 상태에서 분리하십시오.



2. Printer 를 열어주십시오. Cover Roller L&R 을 분리 후, Cover STD 를 상측방향(노란색 화살표)으로 올려 분리하십시오.



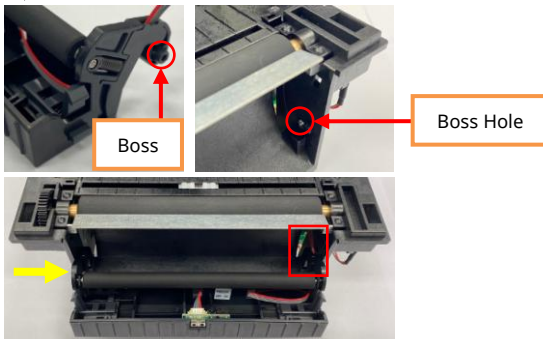
3. 사각 홈(빨간색 원)에 Peeler Bar 를 방향에 맞추어 조립하십시오. 순서 2 에서 분리한 Cover Roller L&R 을 재 조립하십시오.
※ Peeler Bar 오 조립 시, Peeler 가 제대로 동작하지 않으므로 주의하십시오.



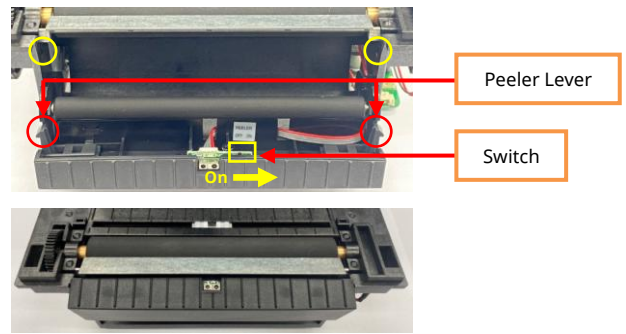
4. Peeler Wire 를 Wire Hole 에 삽입하십시오.



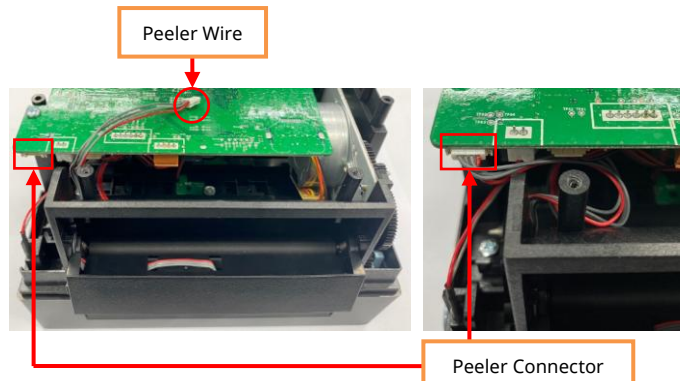
5. Wire 를 삽입한 상태로 하기와 같이 Peeler 의 우측 부 Boss 를 Boss Hole 에 조립한 뒤, 좌측 부분도 Boss Hole 에 맞추어 조립하십시오.



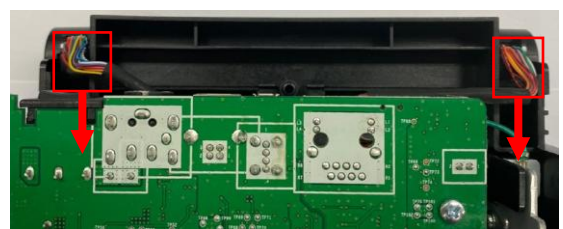
6. 하기와 같이 Switch 를 On 으로 변경하십시오. 그리고 Peeler Lever 가 노란색 원 표시 홈에 딸각 소리가 날 때까지 단아 주십시오.
※ 체결이 안 될 경우, 순서 4-5 과정을 반복 후, 재시도 하십시오.



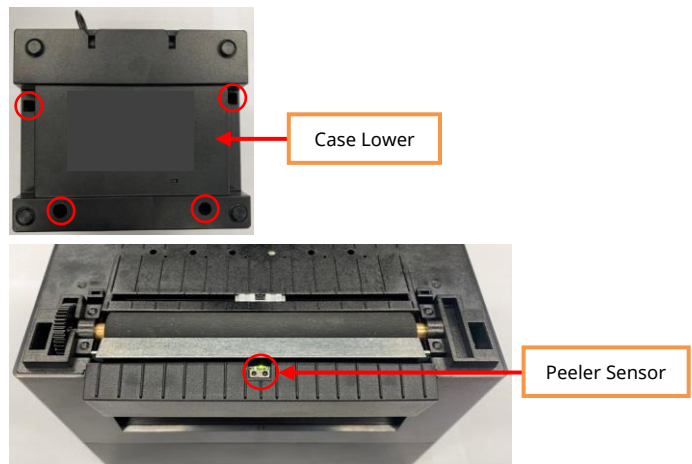
7. Printer 바닥 면이 전면으로 향하게 하십시오. Peeler Wire 를 방향에 맞추어 Peeler Connector(빨간색 사각형)에 삽입하십시오.
※ 다른 Wire 와 꼬이지 않게 정형 하십시오.



8. Wire 2 개소(빨간색 사각형)를 내측 방향으로 최대한 밀어 넣어 주십시오.



9. 순서 1 에서 분리한 Case Lower 를 재 조립하십시오. 이 후, 전원장치를 연결하여 전원을 켜고 Peeler Sensor LED 에 녹색 점등 되는지 확인하십시오.



※ 용지 설치 방법은 User Manual 을 참조하여 주십시오.