

BIXOLON®

Software Manual

TTF Font Downloader

THERMAL RECEIPT PRINTER

Rev. 1.00

<http://www.bixolon.com>

Introduction

TTF Font Downloader is a utility for storing True Type fonts in the POS printer.

This Manual documents how to use TTF Font Downloader.

It is advisable to read the contents of this manual carefully before using “TTF Font Downloader” utility for the first time.

Symbols Information



| | |
|--|---|
|  Caution | Information that must be observed to avoid damage to your equipment or a malfunction. |
|  Note | Important information and useful tips. |

Table of Contents

| | |
|---|----------|
| 1. Operating System (OS) Environment | 4 |
| 2. Supported Printers | 4 |
| 3. Installation & Uninstallation | 5 |
| 3-1 Installation | 5 |
| 3-2 Uninstallation..... | 5 |
| 4. How to use | 6 |
| 4-1 Character Set Menu | 6 |
| 4-1-1 new | 6 |
| 4-1-2 Open | 8 |
| 4-1-3 Save..... | 9 |
| 4-1-4 Close..... | 9 |
| 4-1-5 Information | 10 |
| 4-1-6 Printer Selection..... | 11 |
| 4-2 Character Set Setting..... | 12 |
| 4-2-1 Code page | 12 |
| 4-2-2 Font name..... | 13 |
| 4-2-3 Font type | 14 |
| 4-2-4 Style | 15 |
| 4-3 Font Menu..... | 16 |
| 4-3-1 Add..... | 16 |
| 4-3-2 Delete..... | 17 |
| 4-3-3 Download | 17 |
| 4-3-4 Remove..... | 17 |
| 4-3-5 Edit..... | 18 |
| 4-3-6 Test print | 22 |
| 4-4 View | 23 |
| 4-4-1 Zoom-In/Zoom-Out..... | 23 |
| 4-4-2 Character number | 23 |

1. Operating System (OS) Environment

Following operating systems are supported for usage.

Microsoft Windows VISTA (32bit/64bit)
Microsoft Windows Server 2008 (32bit/64bit)
Microsoft Windows Server 2008R2 (64bit)
Microsoft Windows 7 (32bit/64bit)
Microsoft Windows 8 (32bit/64bit)
Microsoft Windows Server 2012 (64bit)
Microsoft Windows 10 (32bit/64bit)

2. Supported Printers

“TTF Font Downloader” is available for the following BIXOLON printers.

SRP-383

3. Installation & Uninstallation

3-1 Installation

- 1) Double-click the file Software_TTF Font Downloader_Vx.x.x.exe.
- 2) Follow the instructions on the screen to complete the installation process.

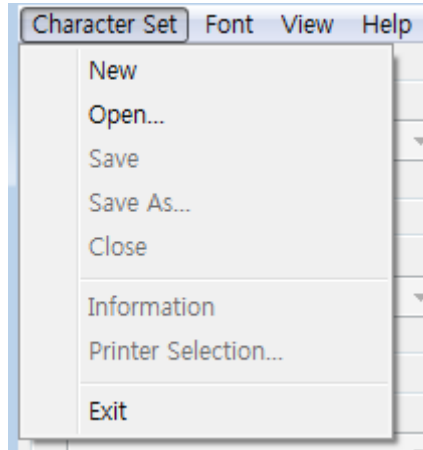
3-2 Uninstallation

- 1) Open "Remove Programs" in the Control Panel.
- 2) Select "TTF Font Downloader" and click the "Remove" button.

4. How to use

4-1 Character Set Menu

- Character set menu provide functions for creating, saving and loading character set, and checking information of character set, selecting for printer.



4-1-1 new

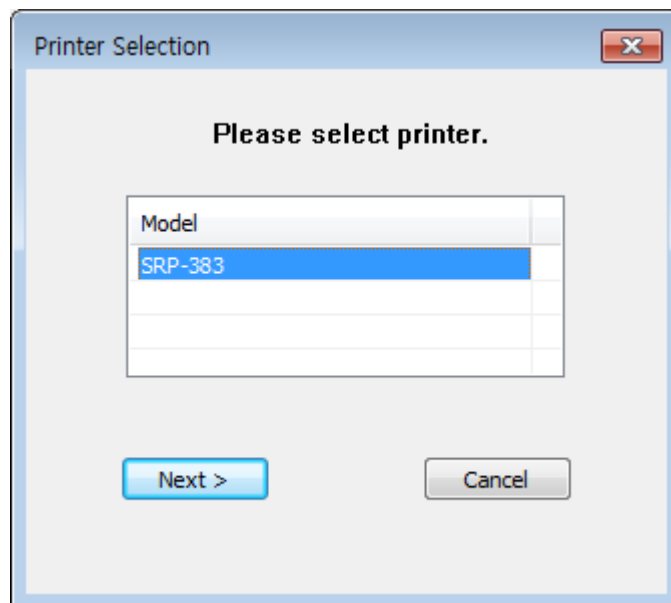
- 1) Select <New> from the <Character Set> menu.



Note

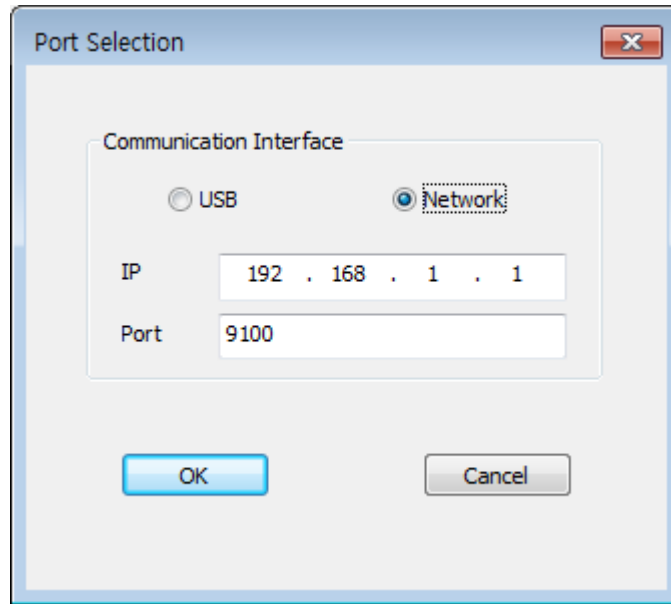
To use TTF Font Downloader program, the printer must be connected.

- 2) The dialog appears as below to be able to select a printer.
Select the printer to use and click <Next>.



TTF Font Downloader

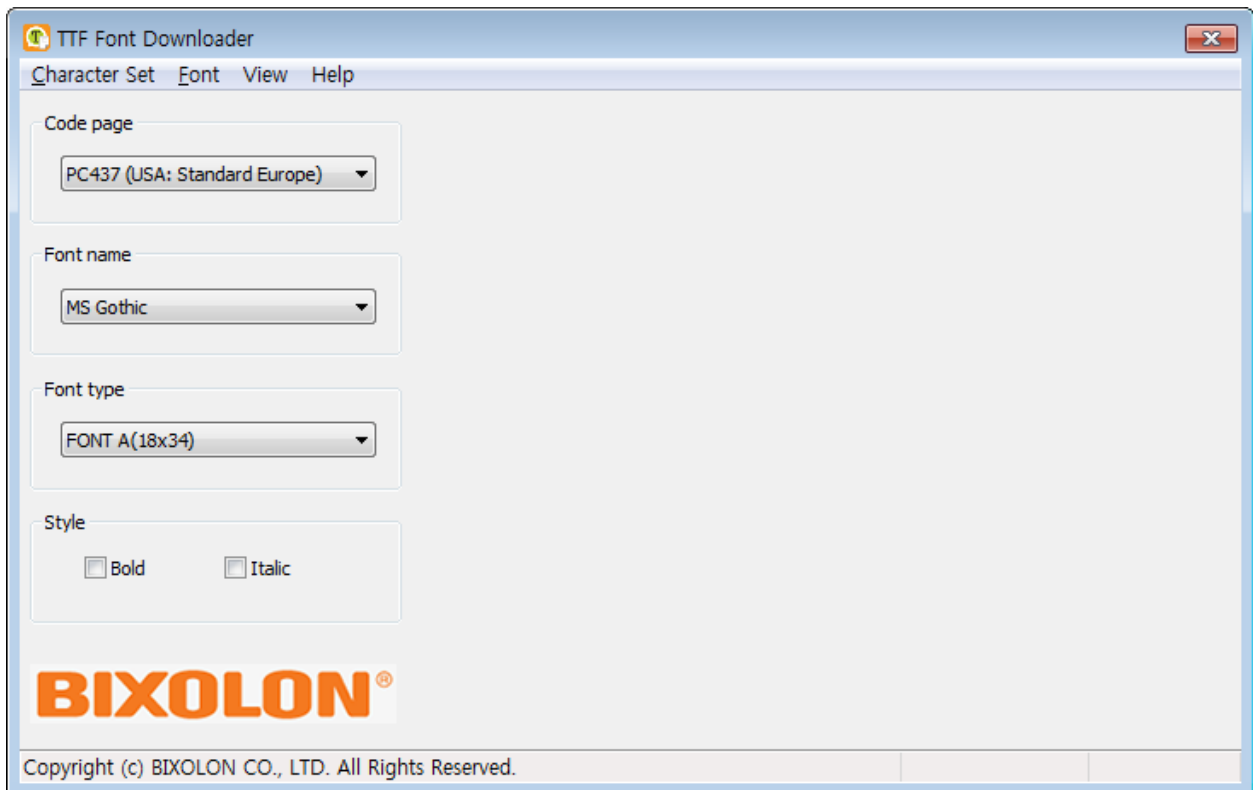
- 3) The dialog appears as below to be able to select an interface.
Select the interface and click <OK>.



Note

If you select Network interface, you have to input IP address.

- 4) When the printer selection is finished, a new character set is generated as below.

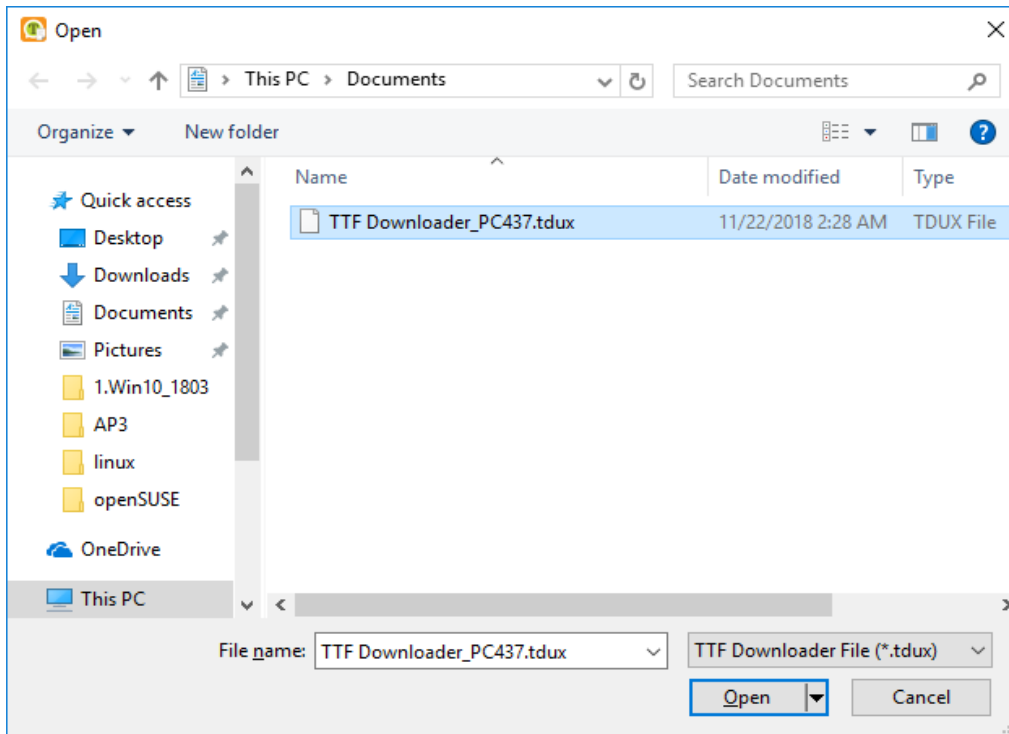


Note

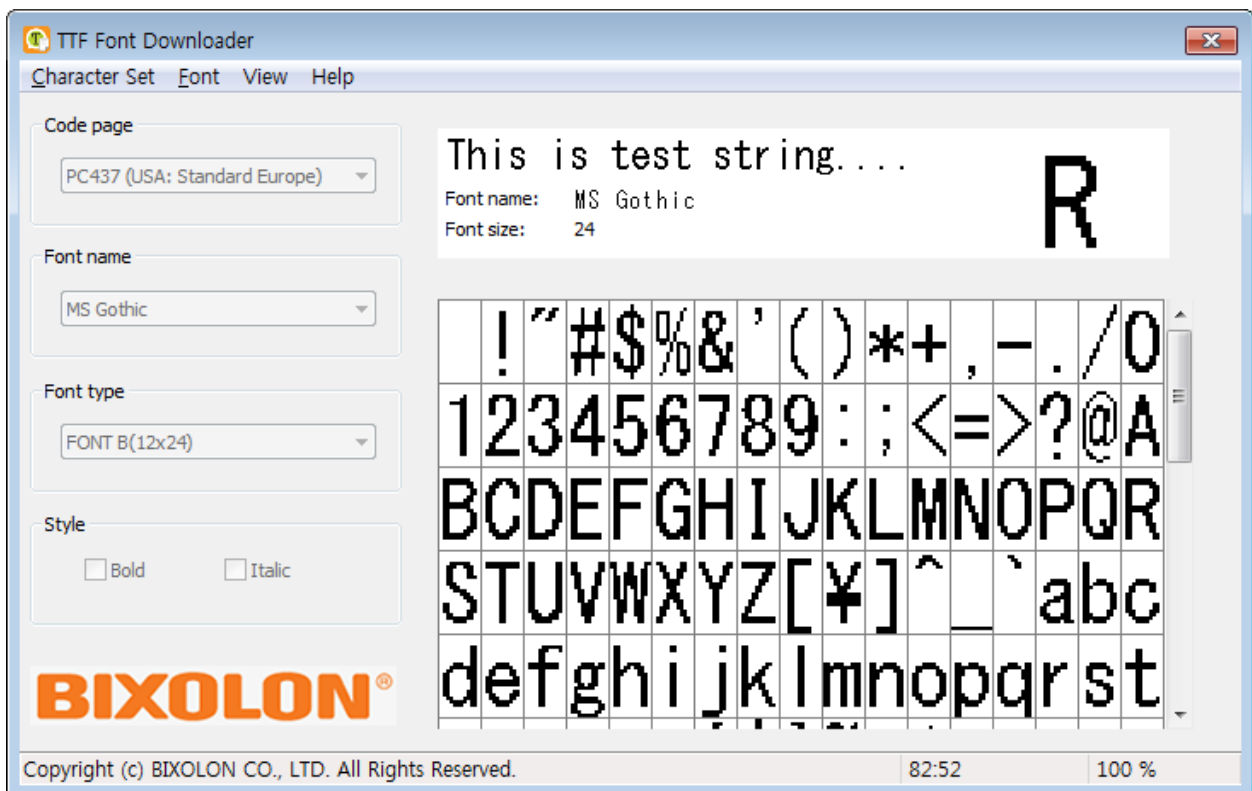
Please refer to <4-2 Character Set Setting> and <4-3 Font Menu> in this manual.

4-1-2 Open

- 1) Select <Open> from the <Character Set> menu.
- 2) Select one of the saved files (*.tdux) in the "Open" dialog as shown below and click the <Open> button.



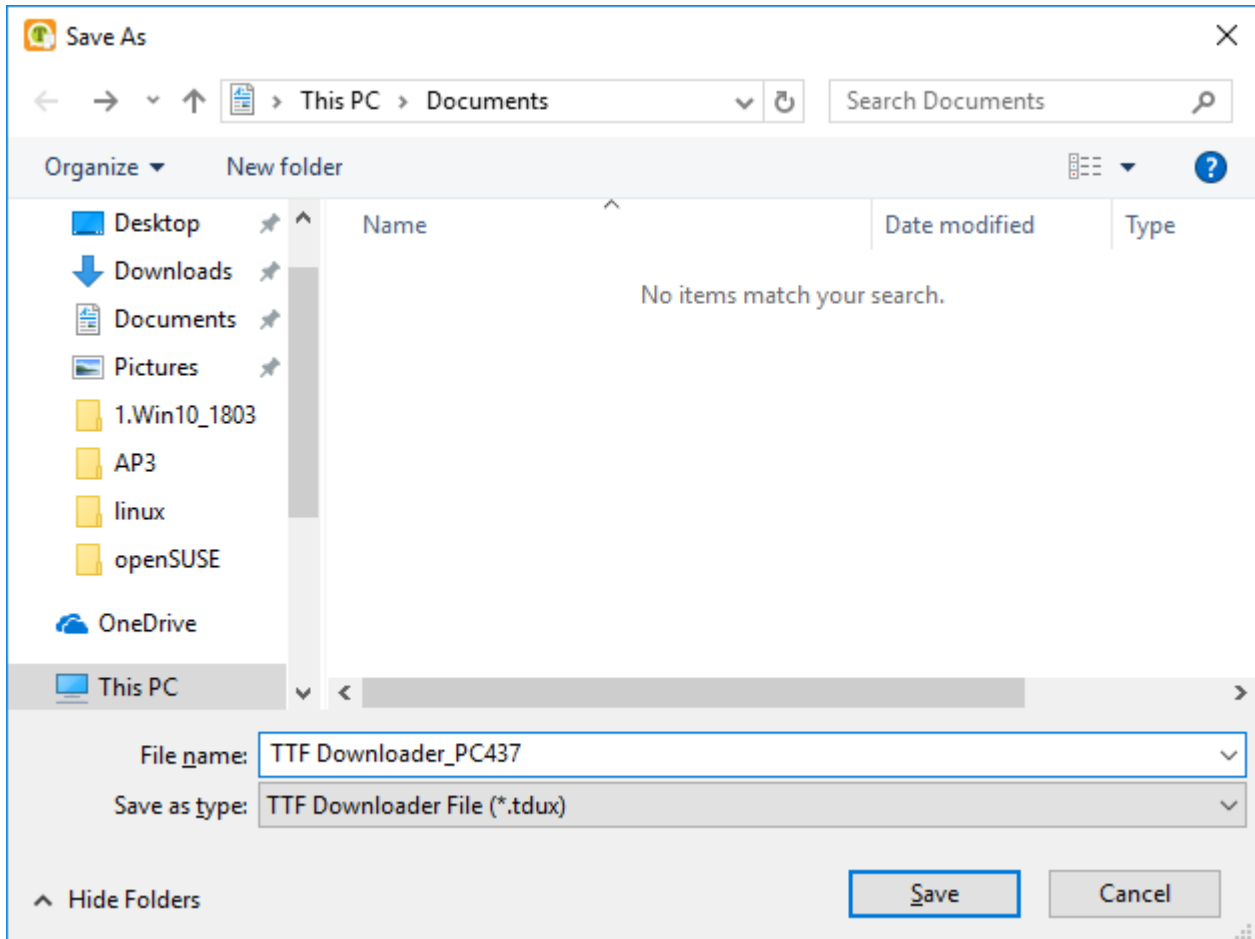
- 3) The character set and font saved in the selected file are displayed as below.



TTF Font Downloader

4-1-3 Save

- 1) Select <Save> from the <Character Set> menu to save the character set and font data you have worked on.
- 2) If you select <Save As>, a dialog will appear as shown below. Enter the location and file name to be saved, and click the <Save> button to save the character set and font data you have worked on with the new name.

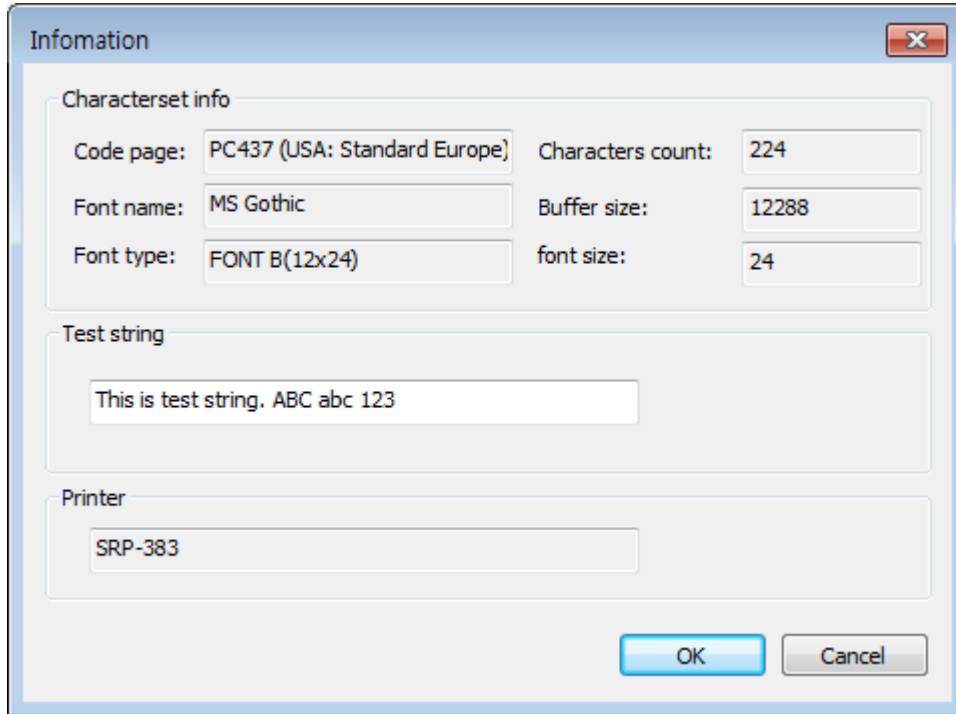


4-1-4 Close

- 1) Select <Close> from the <Character Set> menu to close the character set and font data you have worked on.

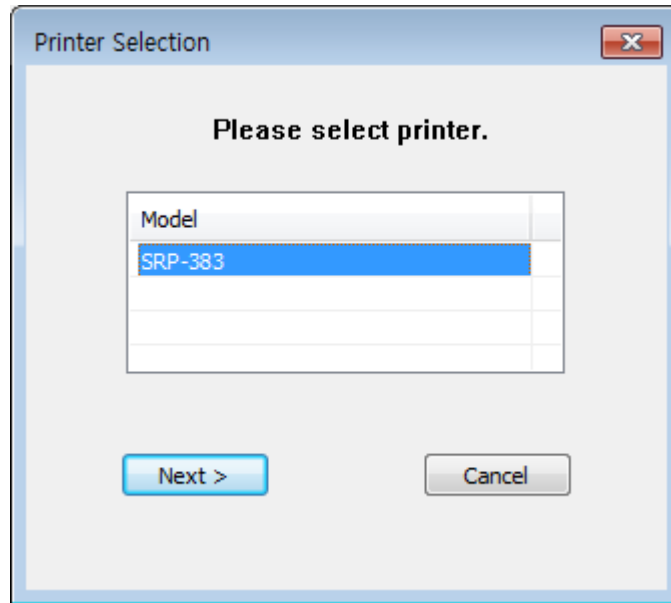
4-1-5 Information

- 1) Select <Information> from the <Character Set> menu in order to check the information of the character set and font
- 2) A dialog appears as below. You can check the information of character set, font, and printer you are working with.

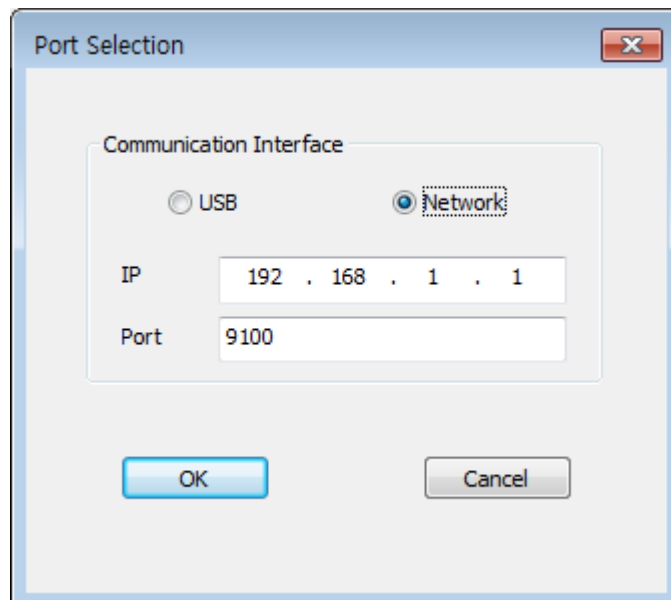


4-1-6 Printer Selection

- 1) Select <Printer Selection> from the <Character Set> menu.
- 2) The dialog appears as below to be able to select a printer.
Select the printer to use and click <Next>.



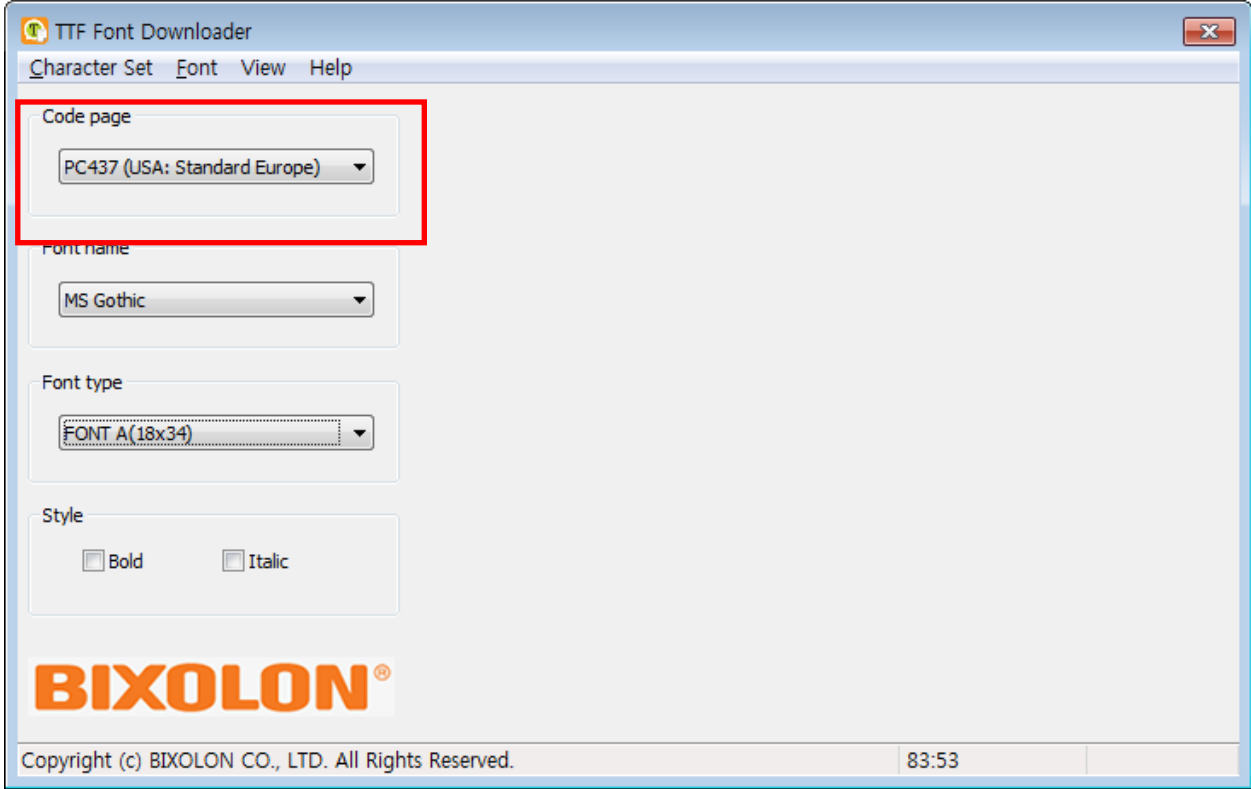
- 3) The dialog appears as below to be able to select an interface.
Select the interface and click <OK>.



4-2 Character Set Setting

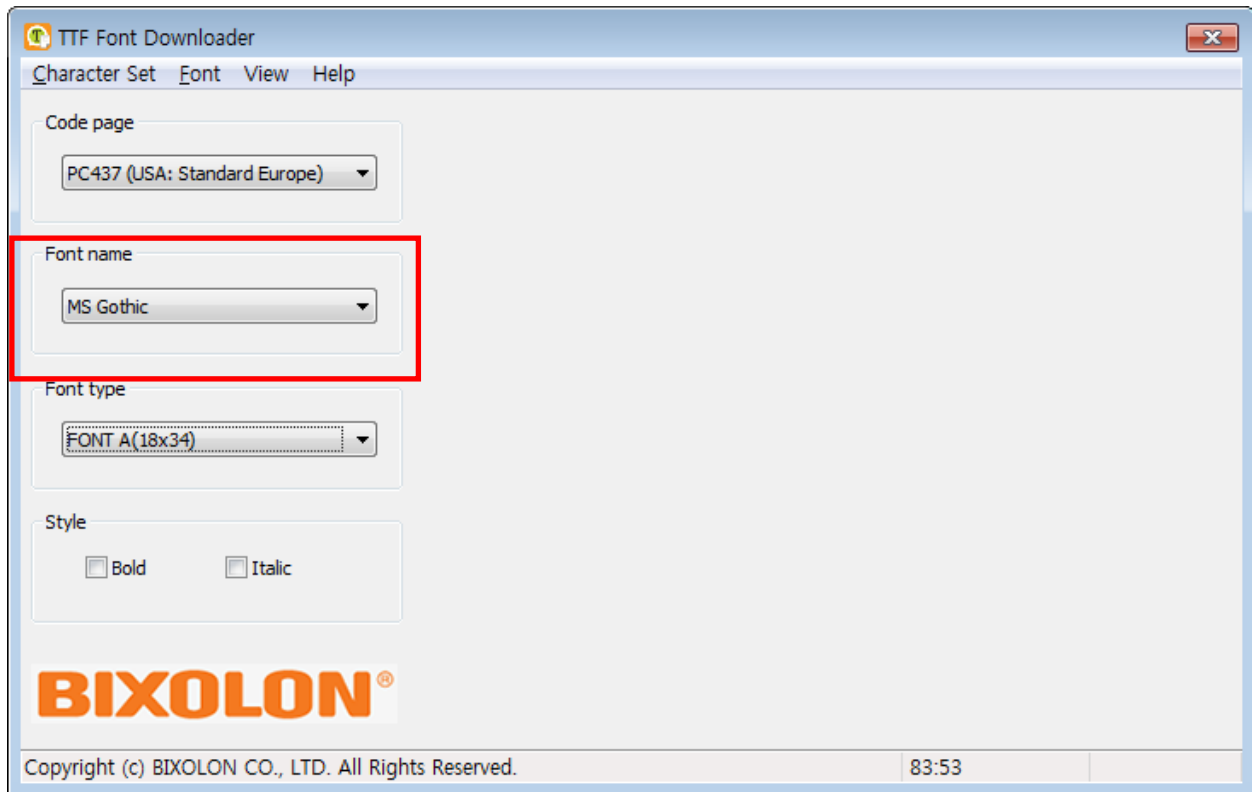
4-2-1 Code page

1) Select the code page you want to work with.





4-2-2 Font name

1) Select the True Type font in the .

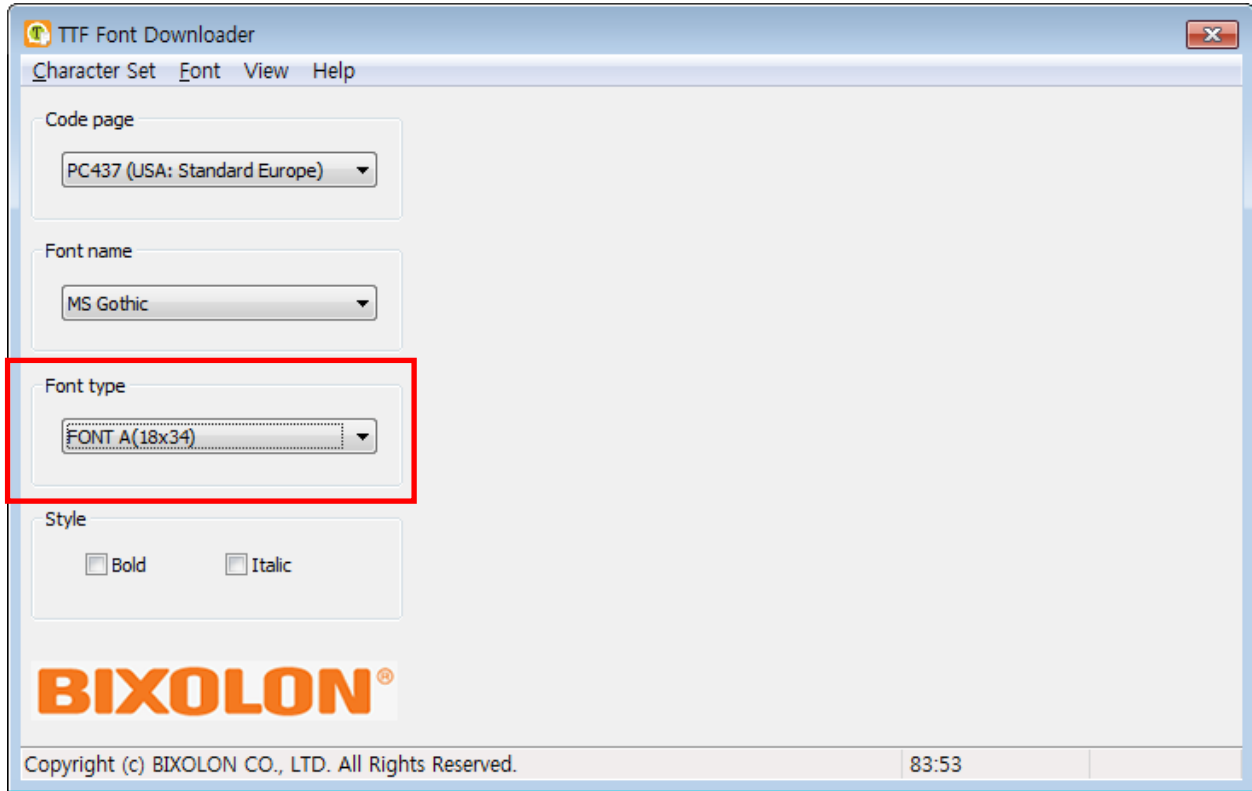


2) You can select the True Type fonts installed on your system.

| | |
|--|---|
|  Note | <p>TTF Font Downloader does not either install True Type fonts on your system or provide font files. The True Type font you to be utilized must be installed in the system before operating the program.</p> <p>It may not support all or part of the supported code page depending on the True Type font. Example) When Arial font is selected after SHIFT-JIS is chosen, blank character will be display.</p> |
|  Caution | <p>Please note that some True Type fonts are subject to copyright protection, and you must comply with the terms of use and copyright notices for the fonts you want to use.</p> <p>BIXOLON is not responsible for any direct or indirect damages, arising from or related to use of True Type fonts.</p> |

4-2-3 Font type

1) Select the font type.



2) See the table below for the available font types.

| Model | Available font type | Size (dot) |
|---------|---------------------|------------|
| SRP-383 | FONT A | 18x34 |
| | FONT B | 12x24 |
| | DOUBLE BYTES FONT | 36x48 |



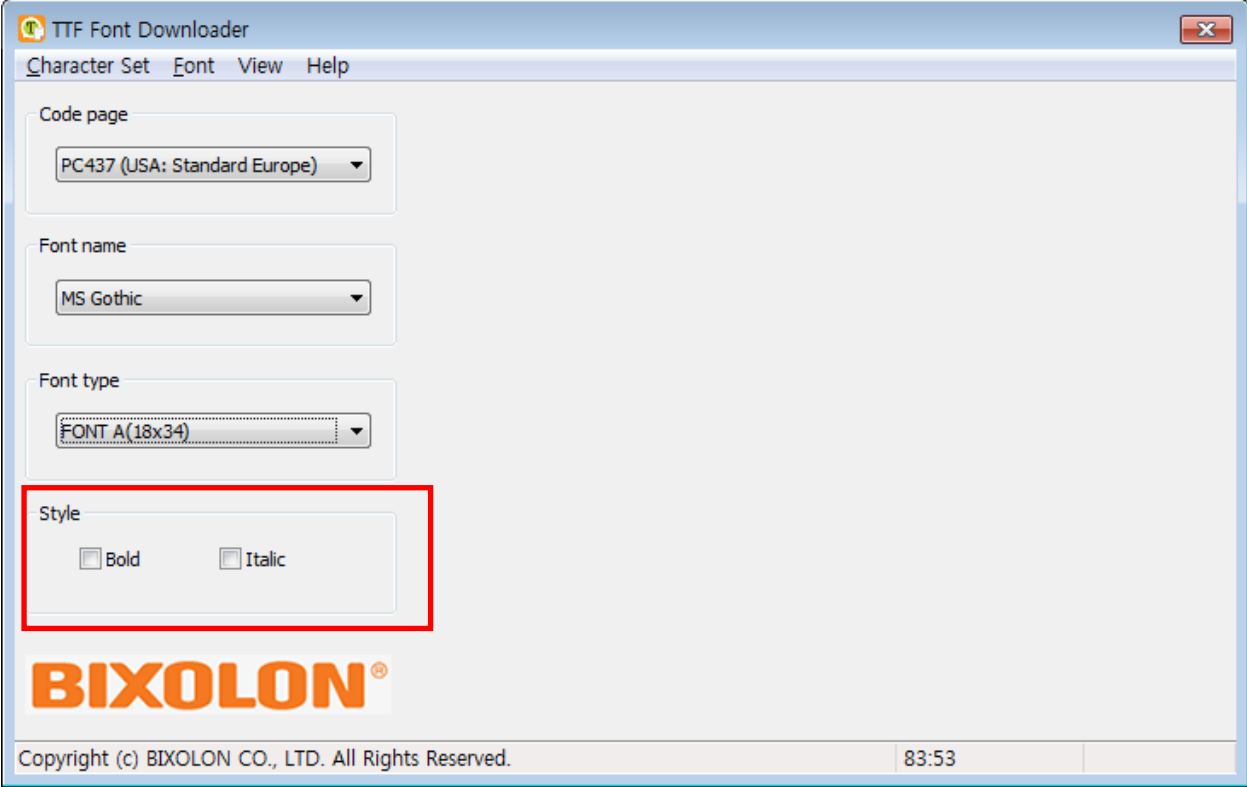
Note

"DOUBLE BYTES FONT" is automatically selected when you choose the double bytes code page.

Example) KS5601, GB2312, BIG5 and SHIFT-JIS.

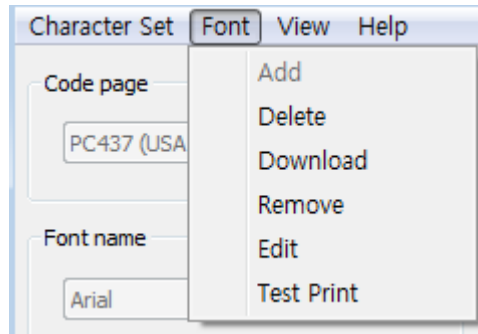
4-2-4 Style

1) Select <Bold> or <Italic> in the <Style>.



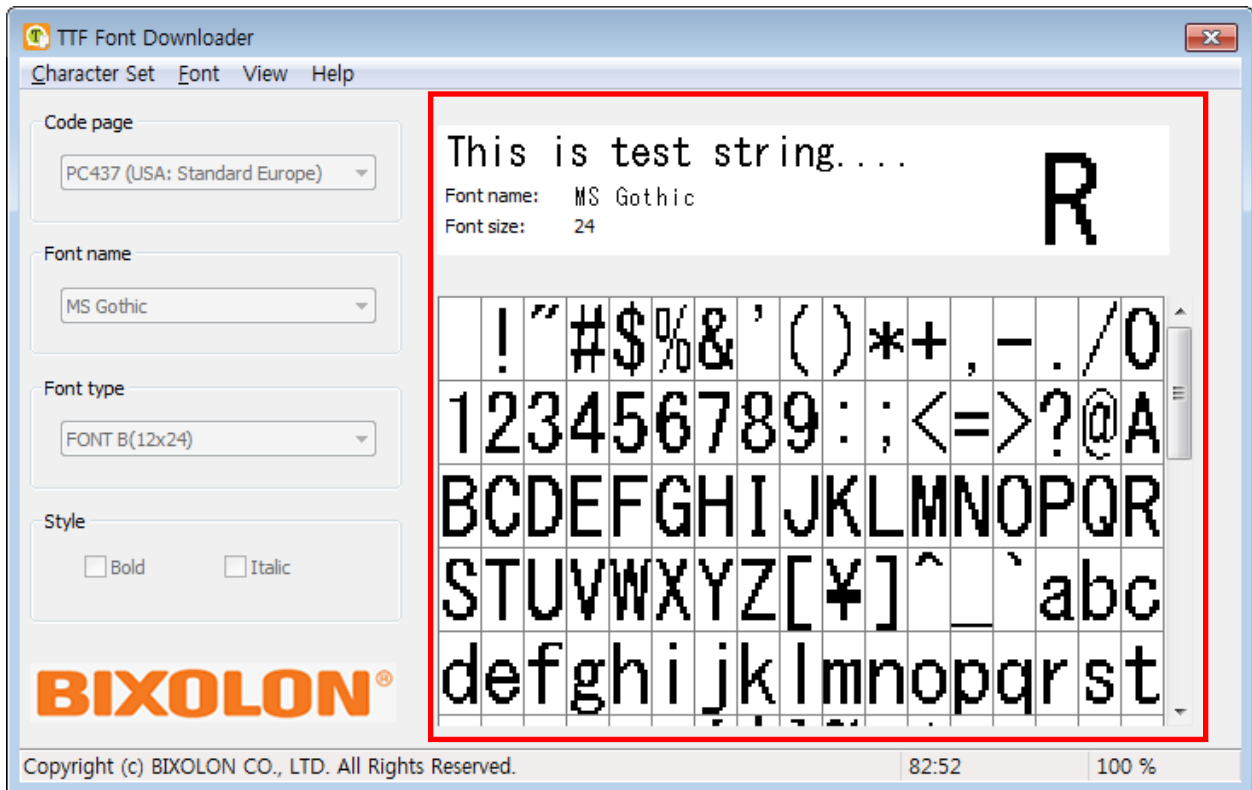
4-3 Font Menu

- Font menu provide functions for adding, deleting, downloading, editing and test printing.



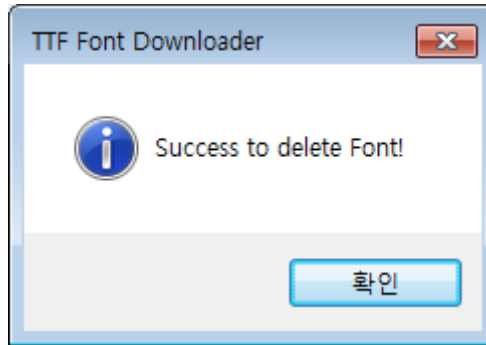
4-3-1 Add

- 1) Select <Add> from the menu.
- 2) When the font is added, you can check the font information and the font glyph.



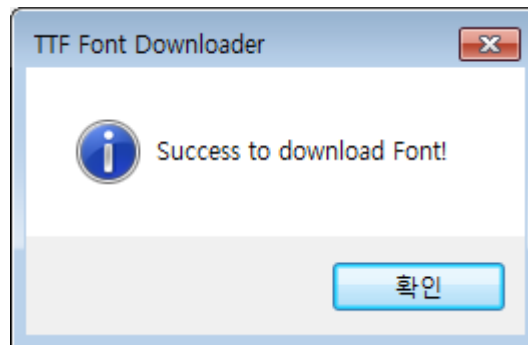
4-3-2 Delete

- 1) Select <Delete> from the menu.
- 2) Selecting <Delete> will delete both the font you are working on and the True Type font in the printer.
- 3) Once the deleting is finish, below dialog will be appeared.



4-3-3 Download

- 1) Select <Download> from the menu.
- 2) Once the downloading is finish, below dialog will be appeared.

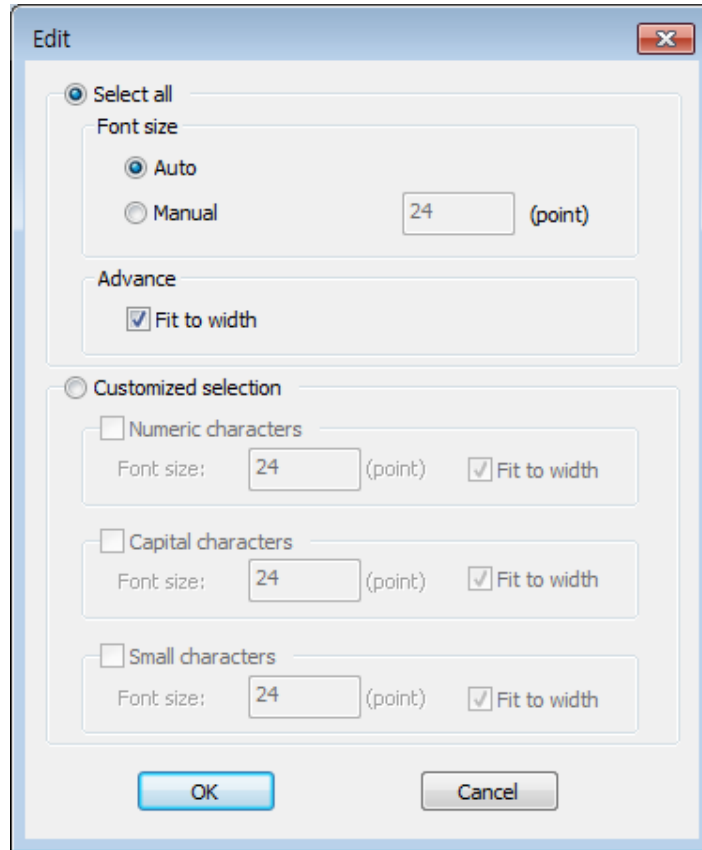


4-3-4 Remove

- 1) Select <Remove> from the menu.
- 2) The font will remove only the program only. The printer don't affects from removing.

4-3-5 Edit

- 1) Select <Edit> from the menu.
- 2) A dialog for editing the font appears as below.

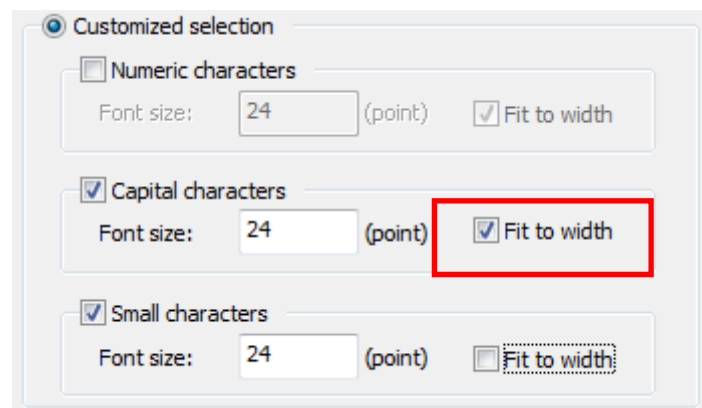


- Select All: All fonts in the code page are set in the same setting.
- Customized selection: It sets numeric, uppercase, and lowercase letters selectively.



Note

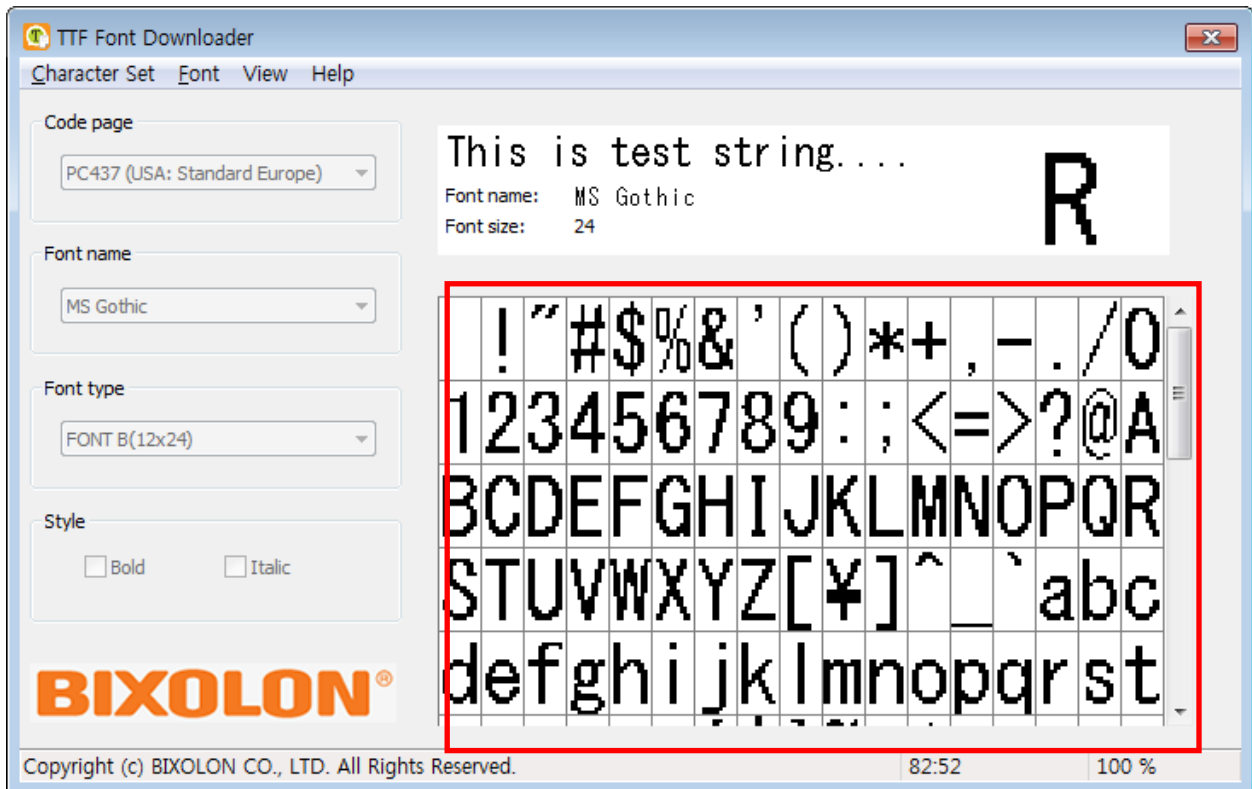
In case of double bytes fonts, the customized selection function will be unable and will be not supported.



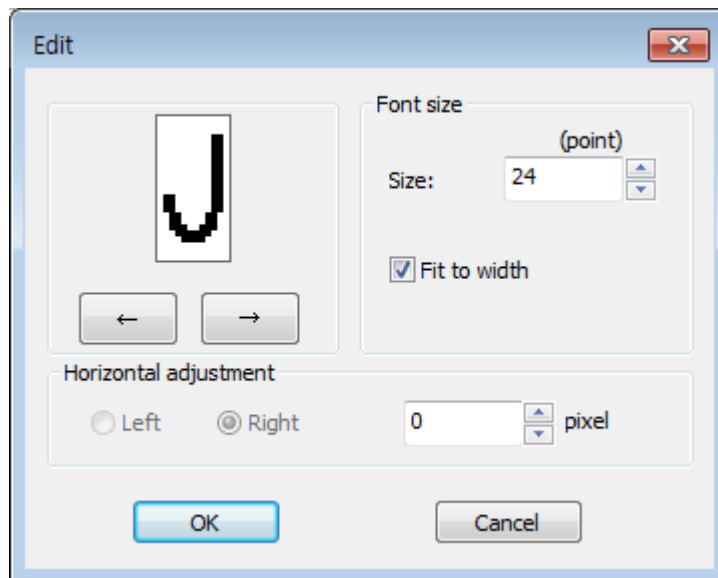
- Fit to width: If the width of the font is larger than the width of the font type, it is reduced to fit the width.

3) Editing individual characters

- Double-click the character to be edited.



- You can set the font size and horizontal adjustment of the selected character.

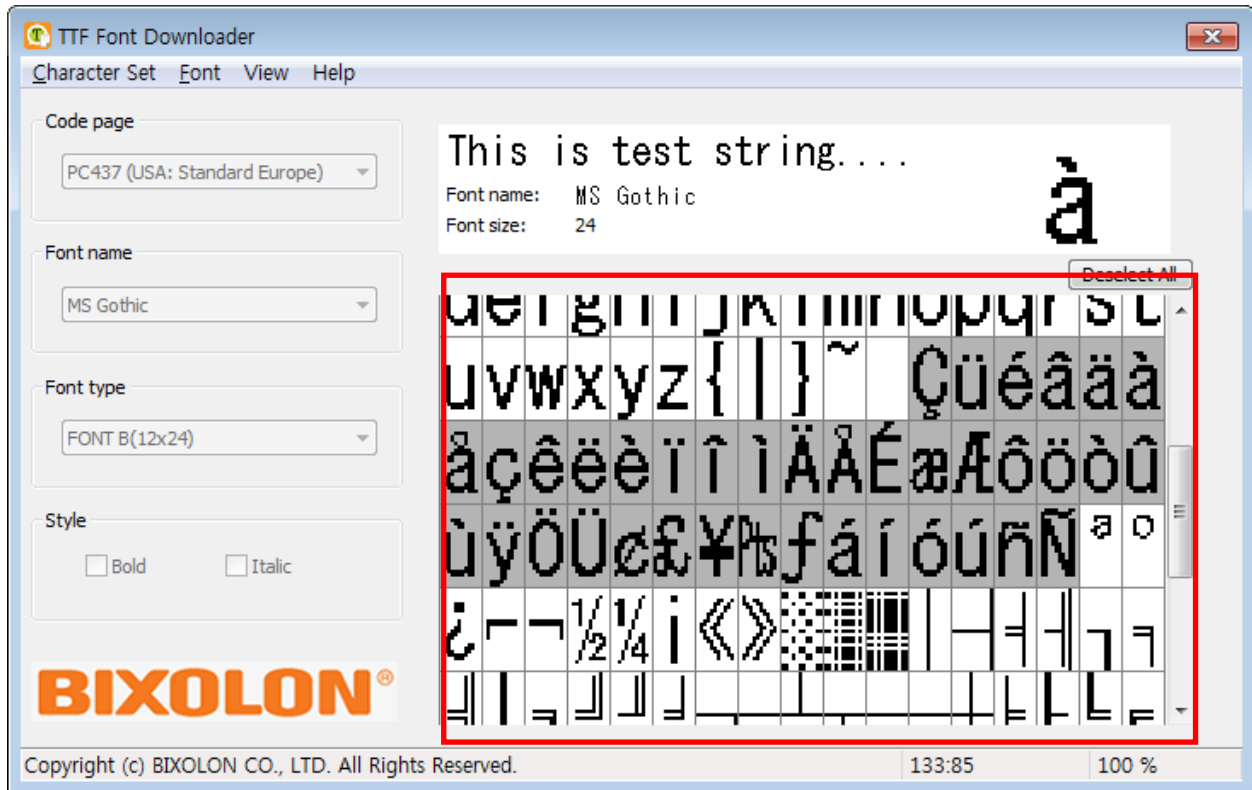


Note

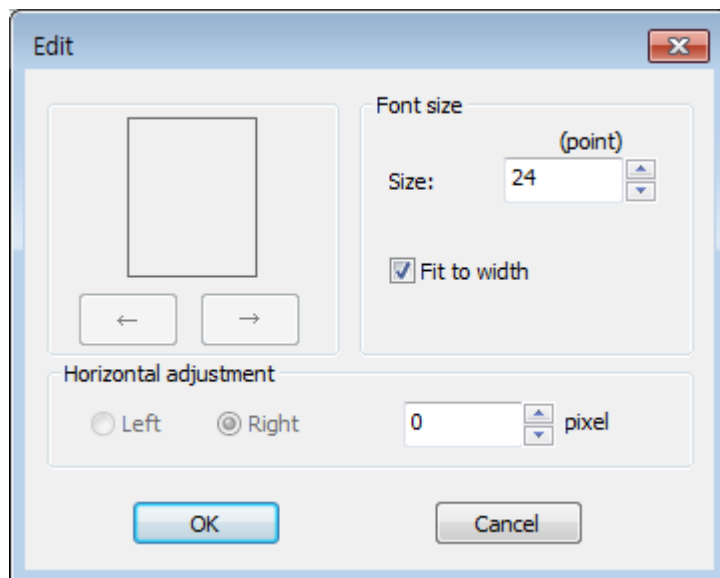
In case of horizontal adjustment, <fit to width> option is automatically disabled and will not be available to set.

3) Editing multiple characters

- Click the characters to edit, or press the left button and drag, and the selected characters will be displayed in gray.

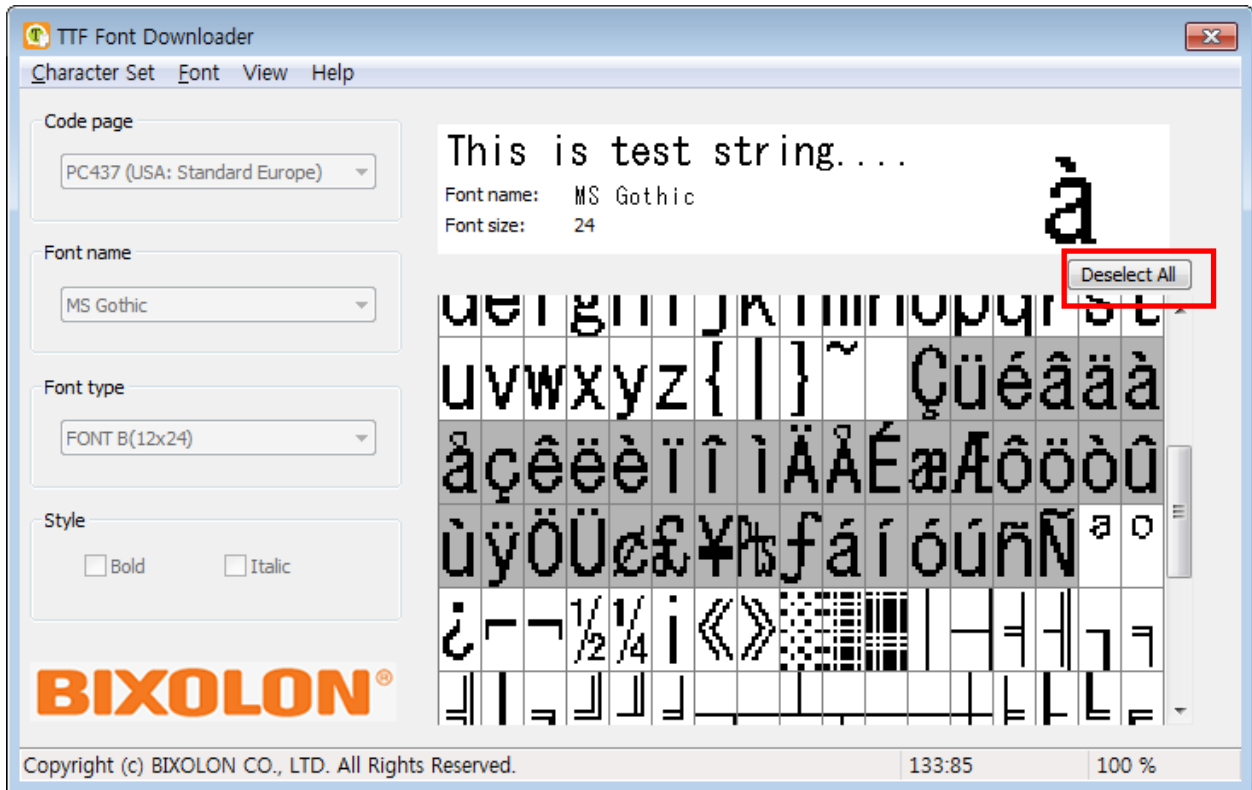


- Select <Edit> from the menu.
- You can set the font size and horizontal adjustment of the selected characters.



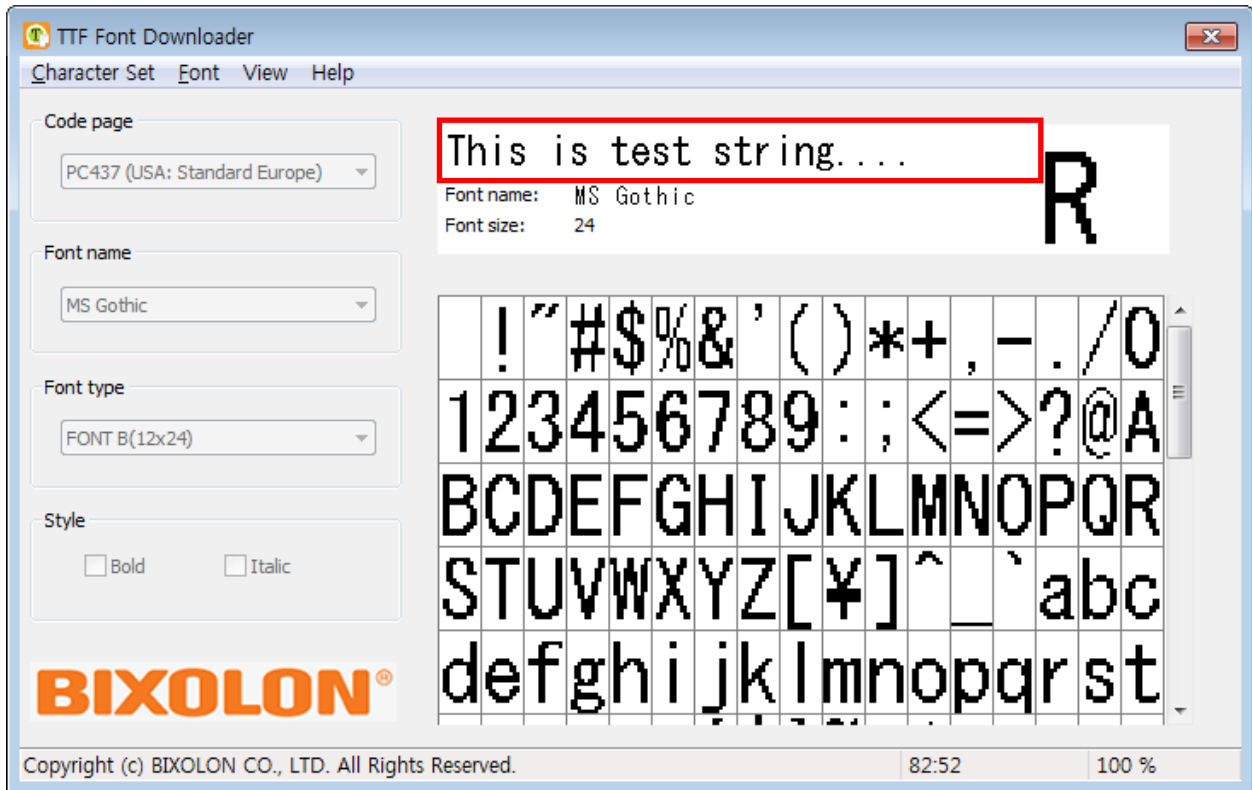
TTF Font Downloader

- If you click the selected characters again, the characters will be deselected. If you push <Deselect All> button, all characters will be deselected.

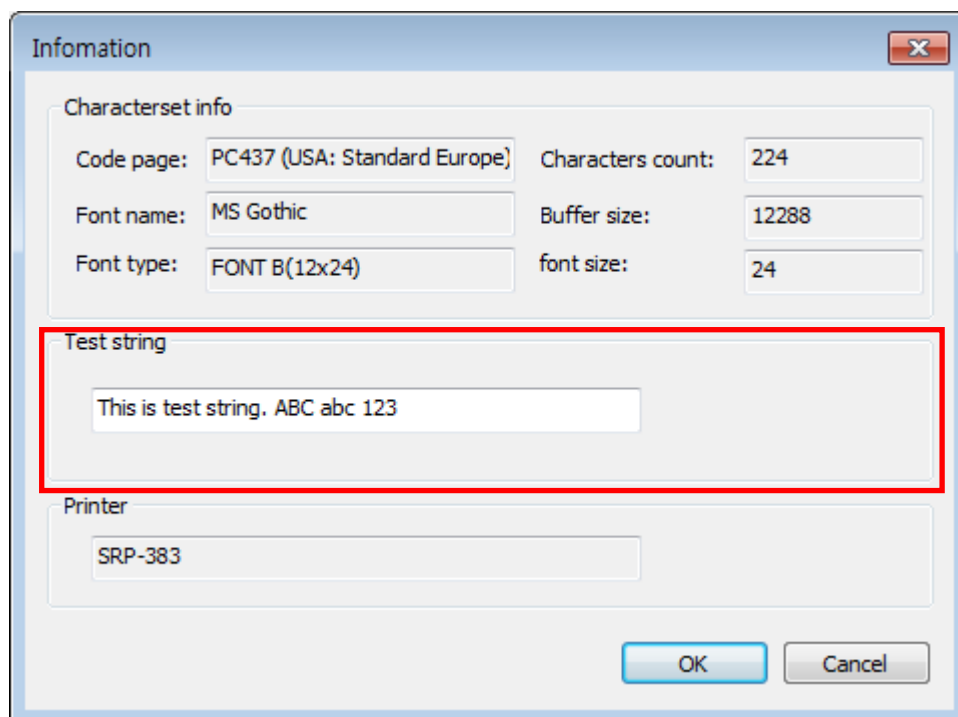


4-3-6 Test print

- 1) Select <Test Print> from the menu.
- 2) The test string is printed using downloaded font.



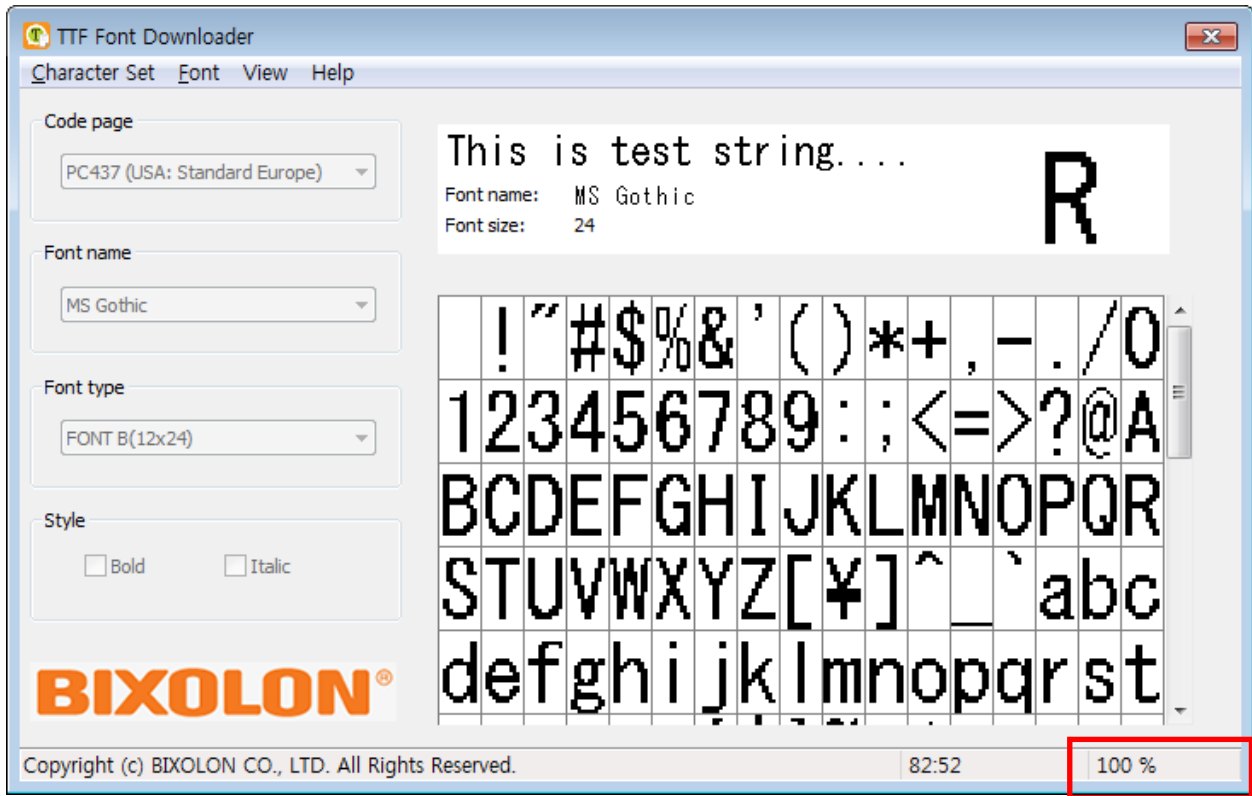
- 3) You can change the test string in <Information> from the <Character Set> menu.



4-4 View

4-4-1 Zoom-In/Zoom-Out

- By selecting <Zoom-In> or <Zoom-Out> in the <View> menu, you can view the characters in an enlarged or reduced state. The selected size is displayed at the bottom of the program.

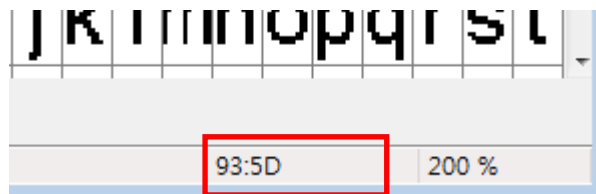


Note

The double bytes code pages (KS5601, GB2312, BIG5, SHIFT-JIS) are not supported.

4-4-2 Character number

- When you locate mouse pointer over a character, it displays the character number as "Decimal: hexadecimal" value at the bottom.



Copyright

© BIXOLON Co., Ltd. All rights reserved.

This user manual and all property of the product are protected under copyright law. It is strictly prohibited to copy, store, and transmit the whole or any part of the manual and any property of the product without the prior written approval of BIXOLON Co., Ltd. The information contained herein is designed only for use with this BIXOLON product. BIXOLON is not responsible for any direct or indirect damages, arising from or related to use of this information.

- The BIXOLON logo is the registered trademark of BIXOLON Co., Ltd.
- All other brand or product names are trademarks of their respective companies or organizations.

BIXOLON maintains ongoing efforts to enhance and upgrade the functions and quality of all our products.

In the following, product specifications and/or user manual content may be changed without prior notice.

Caution

Some semiconductor devices are easily damaged by static electricity. You should turn the printer "OFF", before you connect or remove the cables on the rear side, in order to guard the printer against the static electricity. If the printer is damaged by the static electricity, you should turn the printer "OFF".

Revision history

| Ver. | Date | Page | Description |
|------|----------|------|-------------|
| 1.00 | 28.12.18 | - | New |
| | | | |
| | | | |
| | | | |
| | | | |
| | | | |
| | | | |
| | | | |
| | | | |
| | | | |
| | | | |
| | | | |
| | | | |
| | | | |
| | | | |
| | | | |
| | | | |
| | | | |
| | | | |
| | | | |
| | | | |
| | | | |
| | | | |
| | | | |
| | | | |
| | | | |
| | | | |
| | | | |
| | | | |
| | | | |
| | | | |
| | | | |
| | | | |
| | | | |
| | | | |
| | | | |
| | | | |
| | | | |
| | | | |
| | | | |
| | | | |
| | | | |