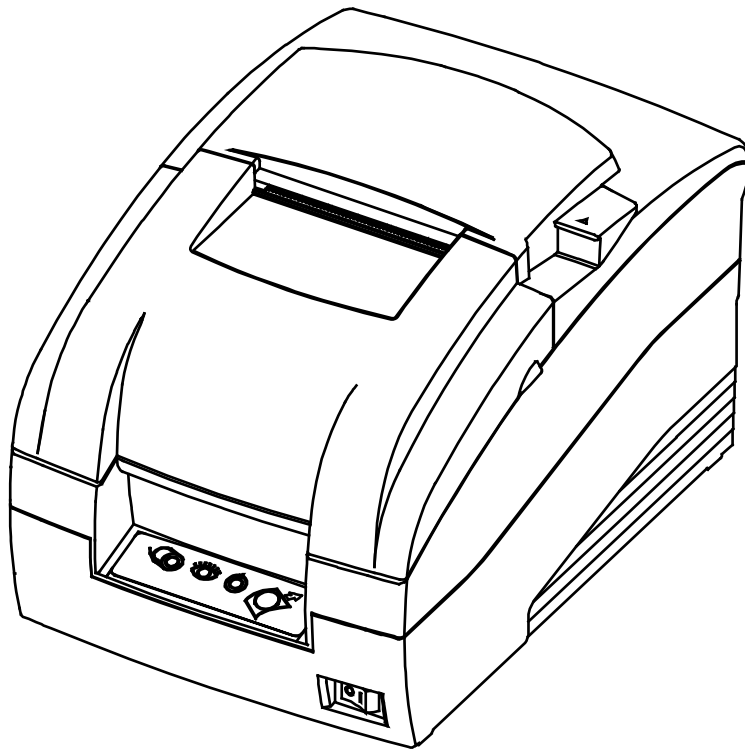


BIXOLON®

Windows Driver Manual
SRP-275II

Impact Printer
Rev. 1.05



<http://www.bixolon.com>

■ Table of Contents

| | |
|---|-----------|
| 1. Manual Information..... | 3 |
| 2. Operating System (OS) Environment..... | 3 |
| 3. Windows Driver Preparation..... | 3 |
| 4. Windows Driver Installation..... | 4 |
| 4-1 Installing on Windows XP / Server 2003..... | 4 |
| 4-1-1 Via Serial Port or Parallel Port..... | 4 |
| 4-1-2 Via USB Port..... | 7 |
| 4-1-3 Via Ethernet Port..... | 9 |
| 4-2 Installing on Windows VISTA / Server 2008 / 7 / 8 / Server 202012 / 10..... | 12 |
| 4-2-1 Via Serial Port or Parallel Port..... | 12 |
| 4-2-2 Via USB Port..... | 15 |
| 4-2-3 Via Ethernet Port..... | 17 |
| 5. Windows Driver Settings..... | 20 |
| 5-1 Paper..... | 20 |
| 5-1-1 Paper Size..... | 21 |
| 5-1-2 Paper Type..... | 22 |
| 5-1-3 Copies..... | 23 |
| 5-1-4 Color..... | 23 |
| 5-1-5 Orientation..... | 23 |
| 5-2 Document Settings..... | 24 |
| 5-2-1 Send Commands..... | 25 |
| 5-2-2 Cash Drawer..... | 25 |
| 5-2-3 Line Feed..... | 25 |
| 5-2-4 Paper Cut..... | 25 |
| 6. Windows Driver Specifications..... | 26 |
| 6-1 Printer fonts..... | 26 |
| 6-2 Special Functions..... | 28 |
| 7. Use of Windows Driver..... | 29 |
| 7-1 Use of Visual Basic..... | 29 |
| 7-1-1 Windows Driver Selection..... | 29 |
| 7-1-2 Text Printing..... | 29 |
| 7-2 Use of WordPad..... | 30 |
| 7-2-1 WordPad Environment Settings..... | 30 |
| 7-2-2 Text Printing..... | 30 |

1. Manual Information

This Windows Driver Installation Manual provides information on installation, detailed specifications, and usage of the printer's Windows Driver according to PC operating system (OS).

We at BIXOLON maintain ongoing efforts to enhance and upgrade the functions and quality of all our products. In following, product specifications and/or user manual content may be changed without prior notice.

2. Operating System (OS) Environment

The following operating systems are supported for usage.

- Microsoft® Windows XP SP3 (32bit)
- Microsoft® Windows XP SP1 or later (64bit)
- Microsoft Windows Server 2003 SP1 or later (32bit/64bit)
- Microsoft Windows VISTA (32bit/64bit)
- Microsoft Windows Server 2008 (32bit/64bit)
- Microsoft Windows Server 2008R2 (64bit)
- Microsoft Windows 7 (32bit/64bit)
- Microsoft Windows 8 (32bit/64bit)
- Microsoft Windows Server 2012 (64bit)
- Microsoft Windows 10 (32bit/64bit)

* Serial and Parallel printer port do not work on Windows 10 version 1511 (OS Build 105860.104) specific. We recommend you to install the latest Windows 10 update through Windows Update before installing Windows Driver.

You can download and install the Windows Update in the Update & security tab of the Settings menu (☰ > Settings > Update & security > Windows Update).

3. Windows Driver Preparation

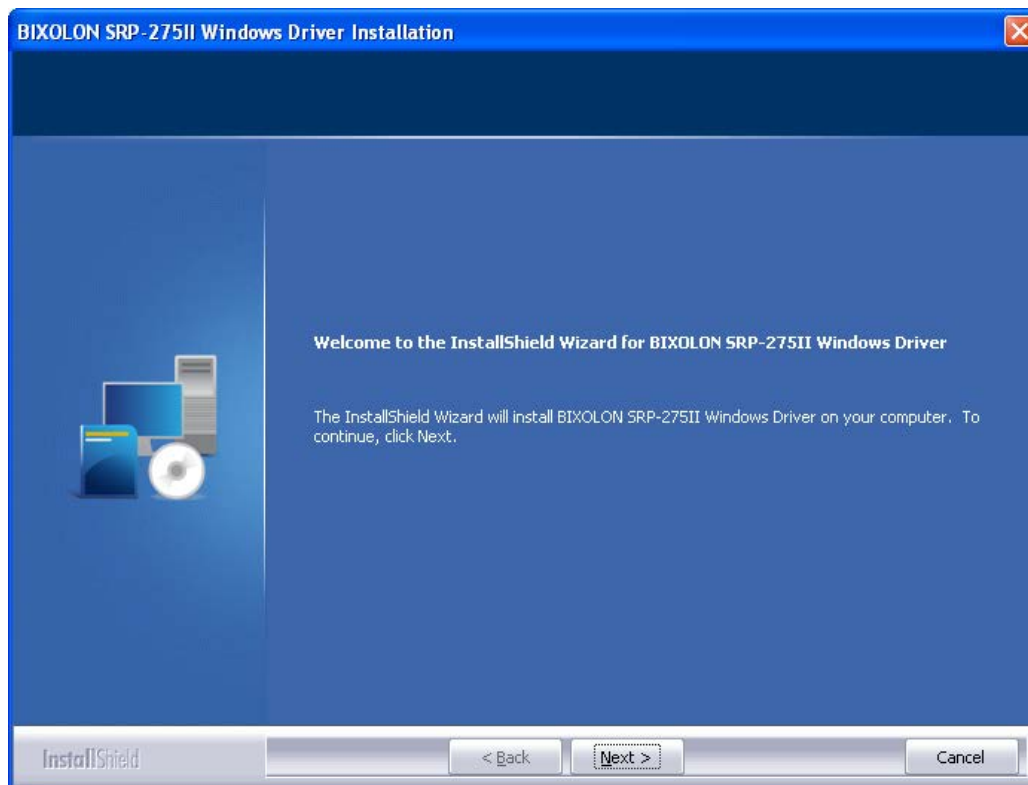
The Windows Driver is included in the enclosed CD, and the latest file version can be downloaded from BIXOLON website. (**www.bixolon.com**)

4. Windows Driver Installation

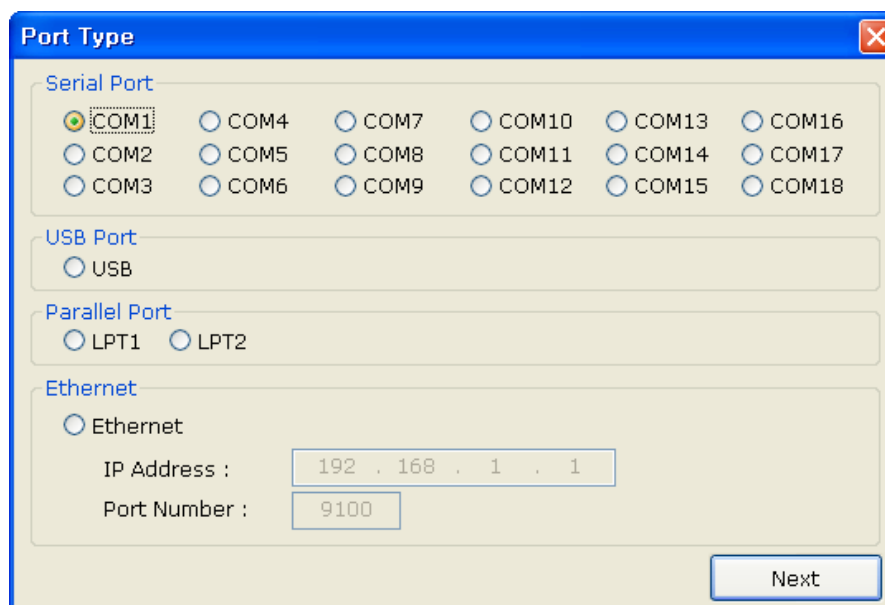
4-1 Installing on Windows XP / Server 2003

4-1-1 Via Serial Port or Parallel Port

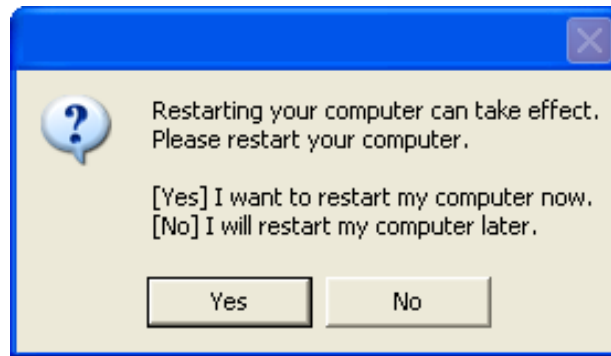
- 1) Double-click the Windows Driver installation file.
- 2) Click **Next**.



- 3) Select a COM or LPT port to be used, and then click **Next**.



4) Click **Yes** to reboot the PC.



5) Open the printer properties window in the Windows OS.

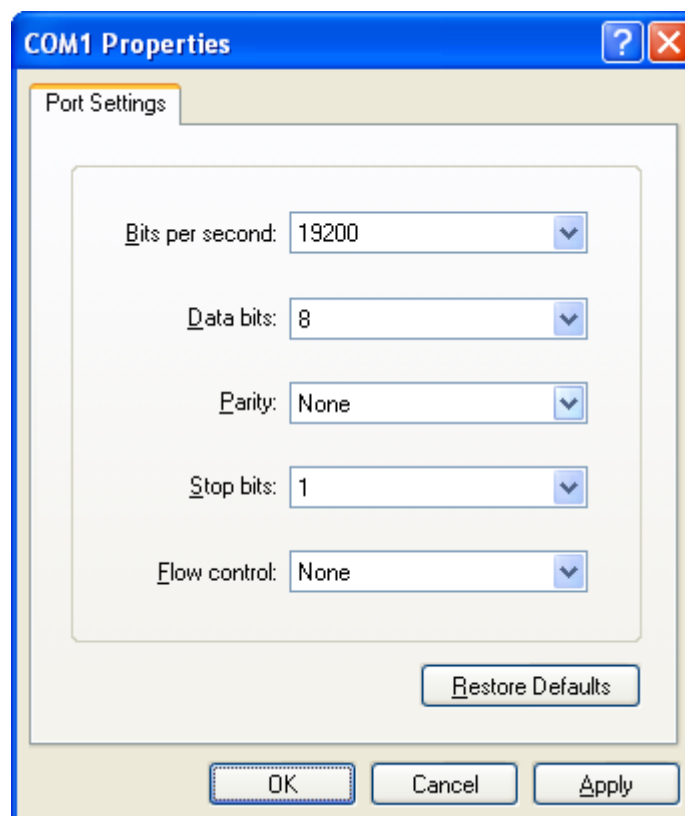
※ Control Panel – Printers and Faxes.

6) In the **Ports** tab, click **Configure Port**.

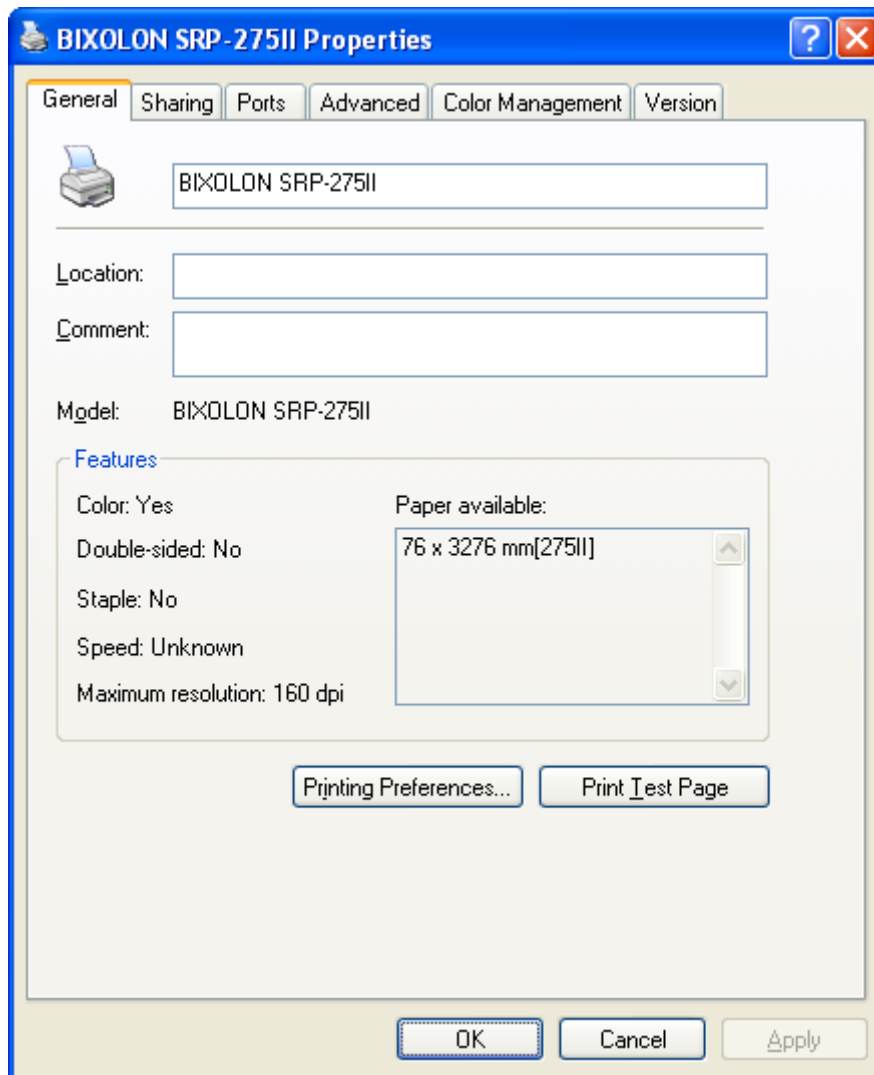
※ Skip this step if you selected a LPT port.

7) Match the communication settings to those of the printer. The communication settings of the printer can be performed by conducting a self-test.

※ Skip this step if you selected a LPT port.

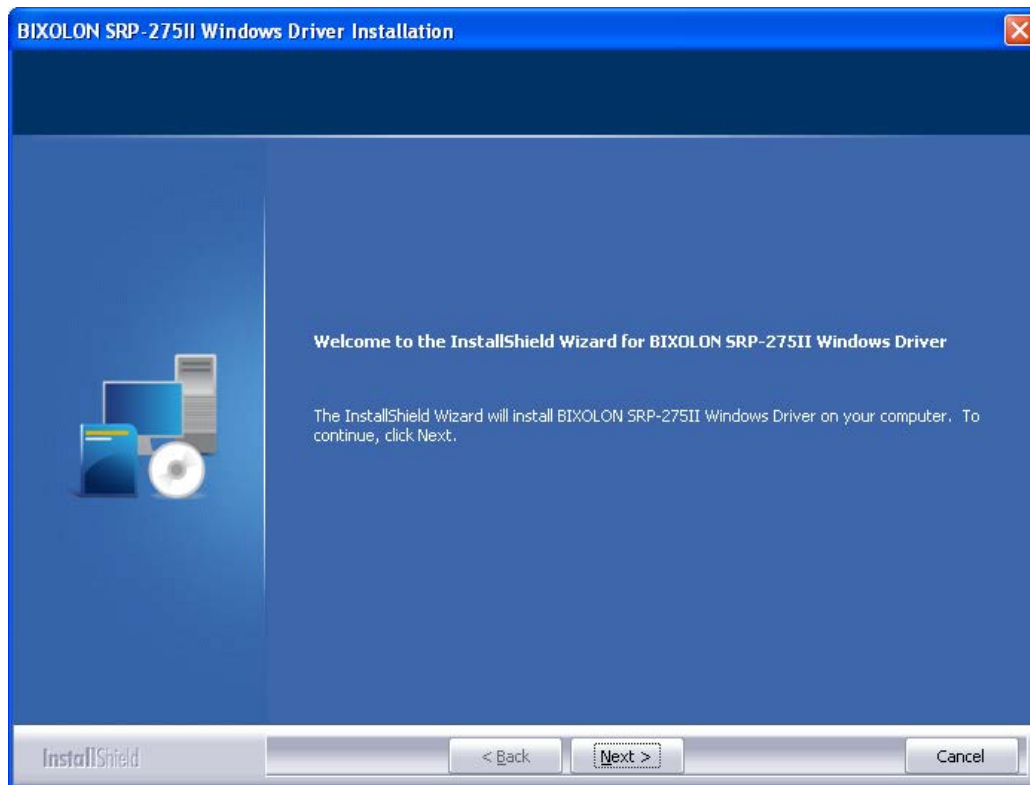


8) Click **Print Test Page** and check printing status. Proper installation of the driver is indicated if the test page is printed normally.

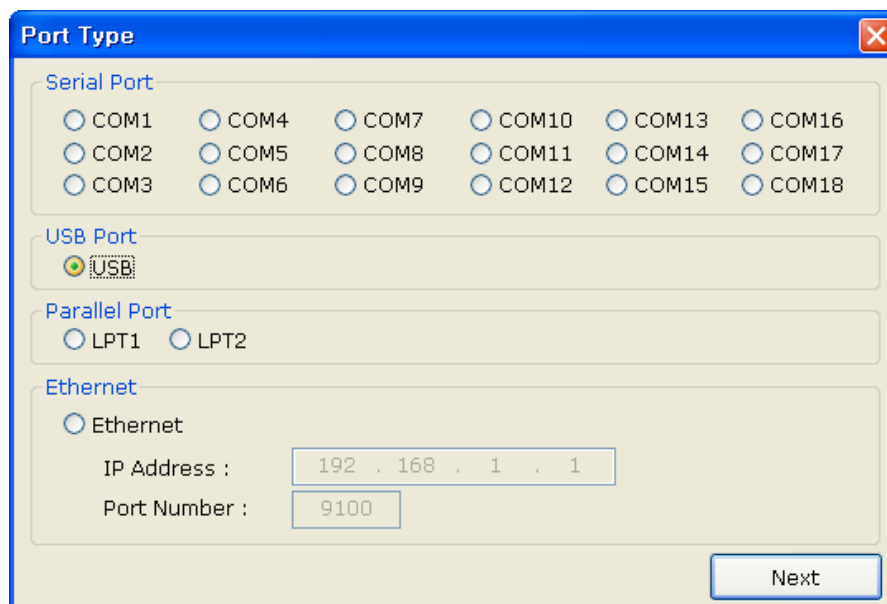


4-1-2 Via USB Port

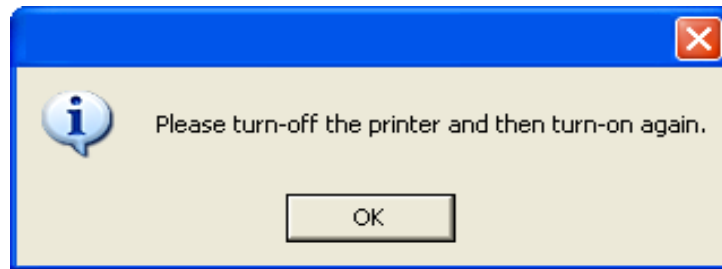
- 1) Double-click the Windows Driver installation file.
- 2) Click **Next**.



- 3) Select **USB** and then click **Next**.



4) Click **OK**.

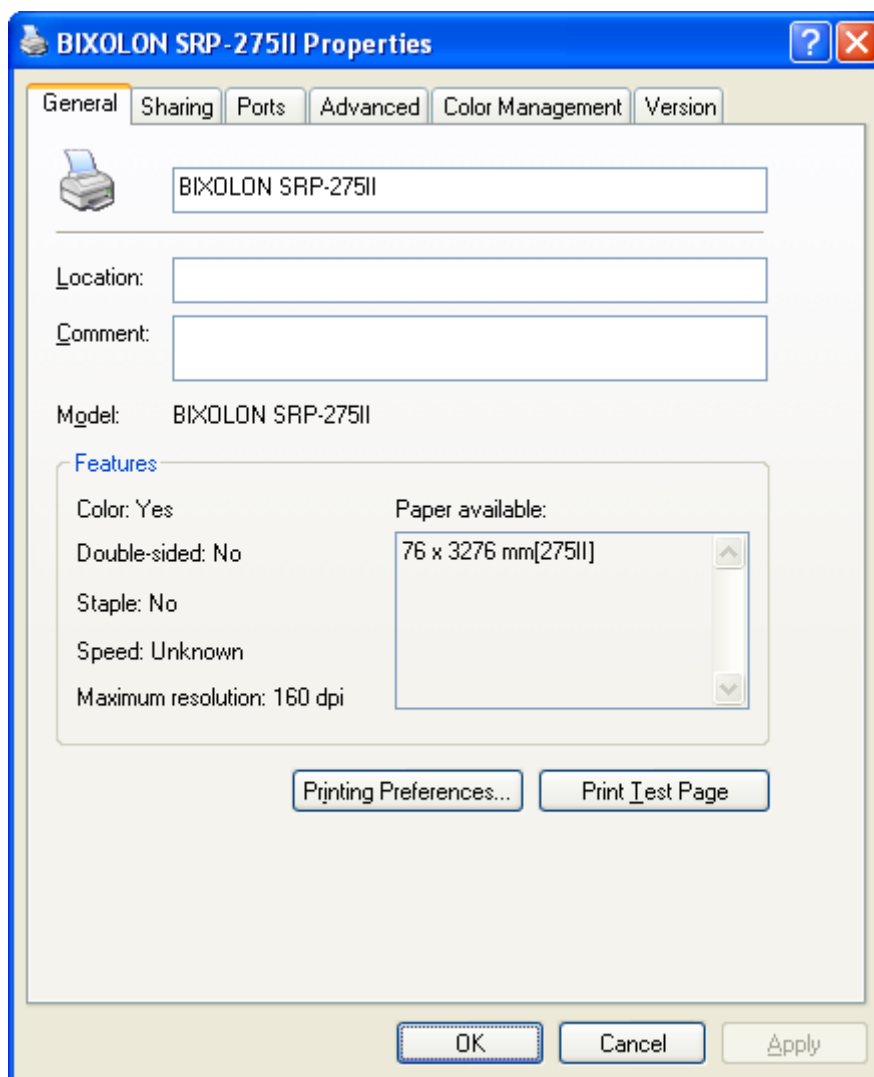


5) Turn off the printer and then turn it on. The printer driver will be installed automatically.

6) Open the printer properties window in the Windows OS.

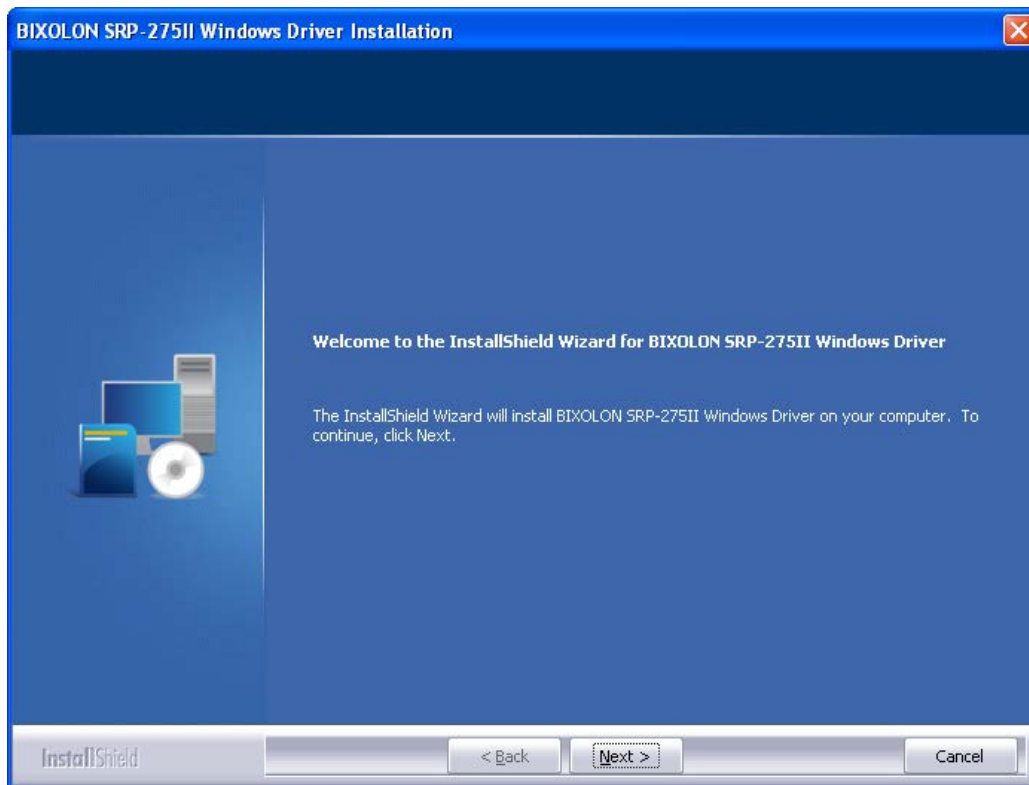
※ Control Panel – Printers and Faxes.

7) Click **Print Test Page** and check printing status. Proper installation of the driver is indicated if the test page is printed normally.

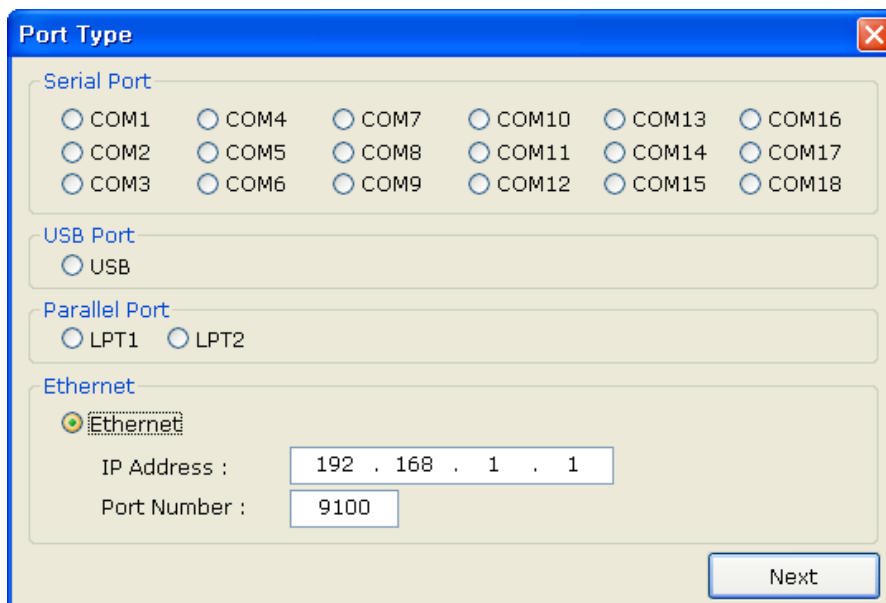


4-1-3 Via Ethernet Port

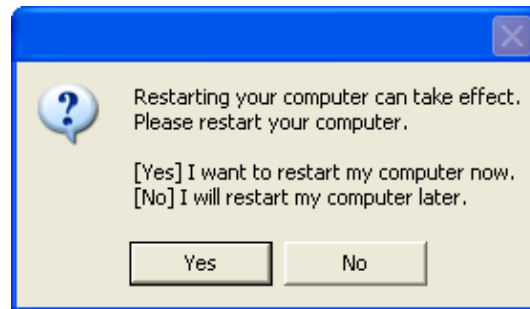
- 1) Double-click the Windows Driver installation file.
- 2) Click **Next**.



- 3) Select **Ethernet**.
- 4) Enter the IP address and port number, and then click **Next**.



5) Click **Yes** to reboot the PC.



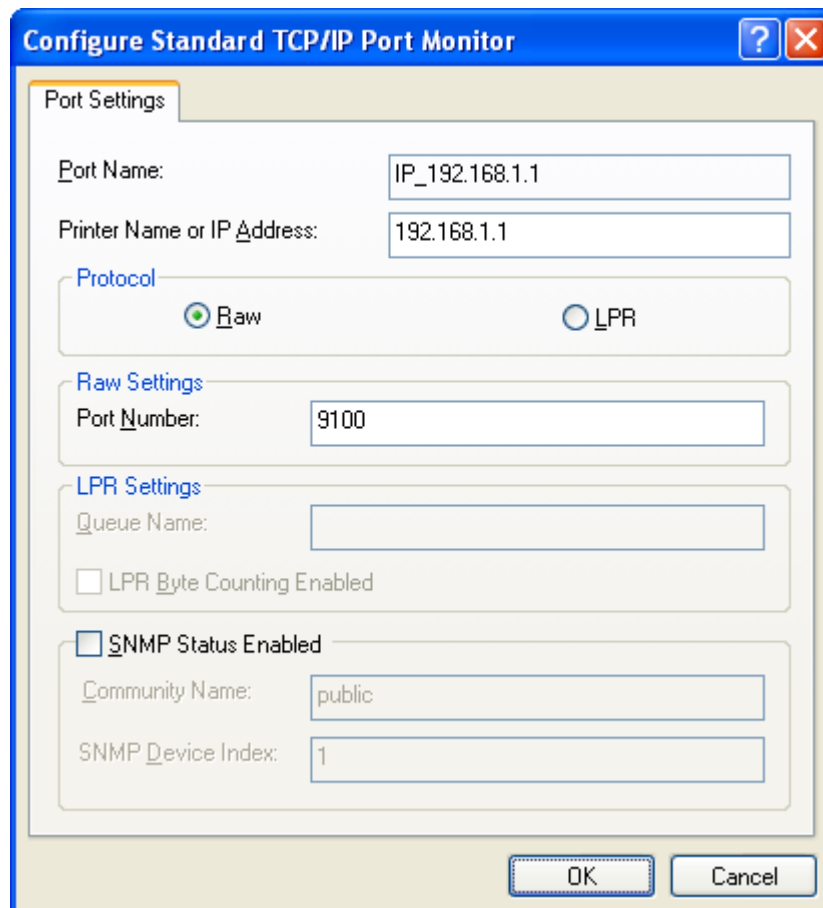
6) Open the printer properties window in the Windows OS.

※ Control Panel – Printers and Faxes.

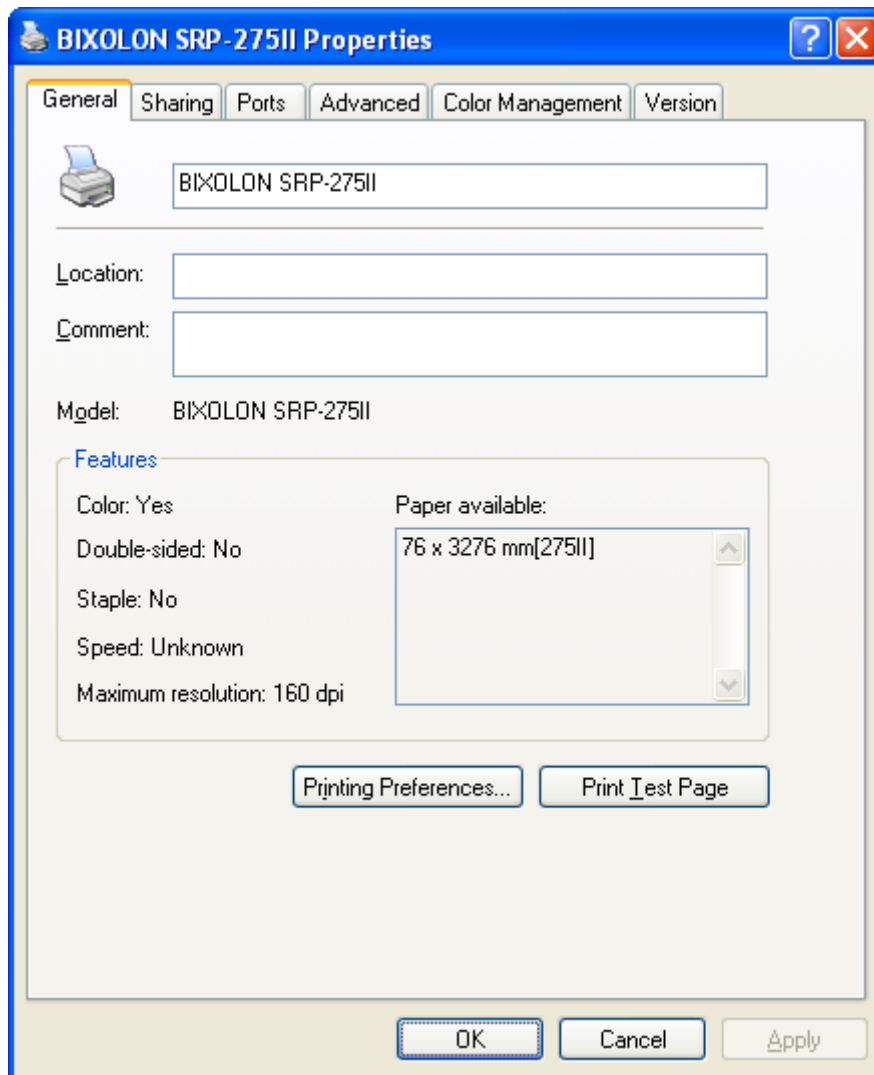
7) In the **Ports** tab, click **Configure Port....**

8) Match the communication settings to those of the printer.

※ The “LPR” protocol is not supported with this printer.



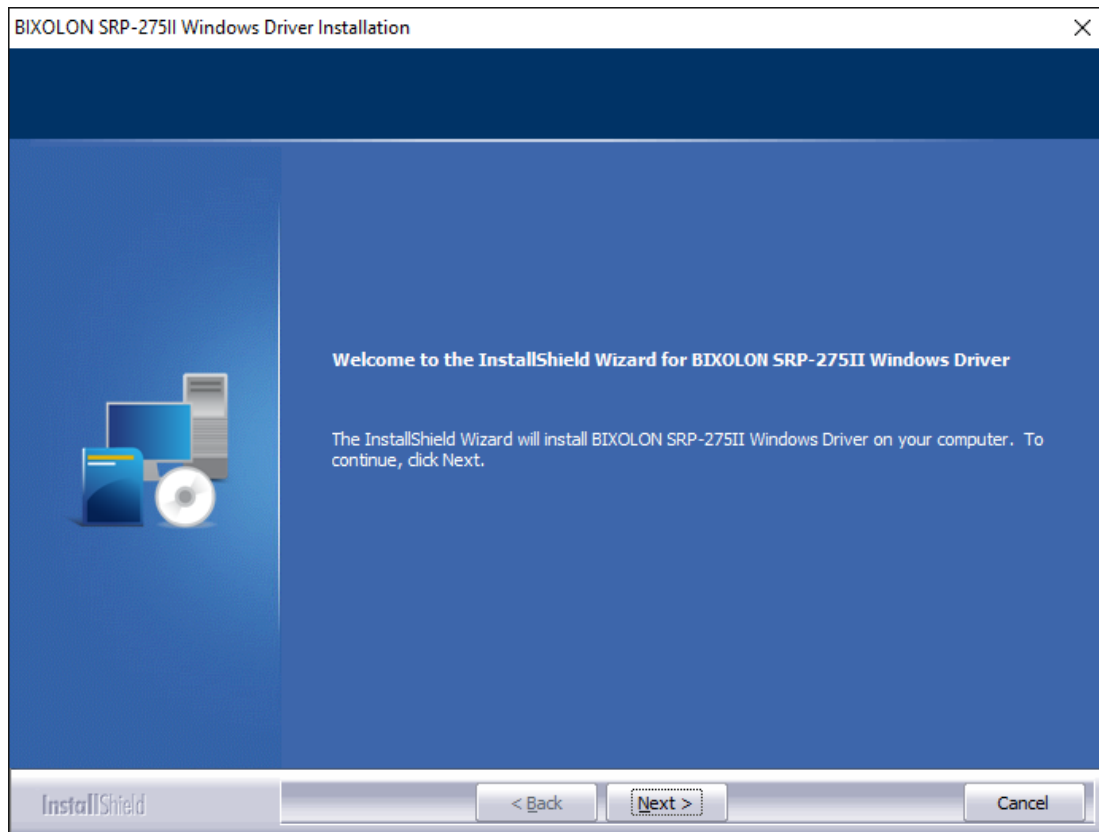
- 9) Click **Print Test Page** and check printing status. Proper installation of the driver is indicated if the test page is printed normally.



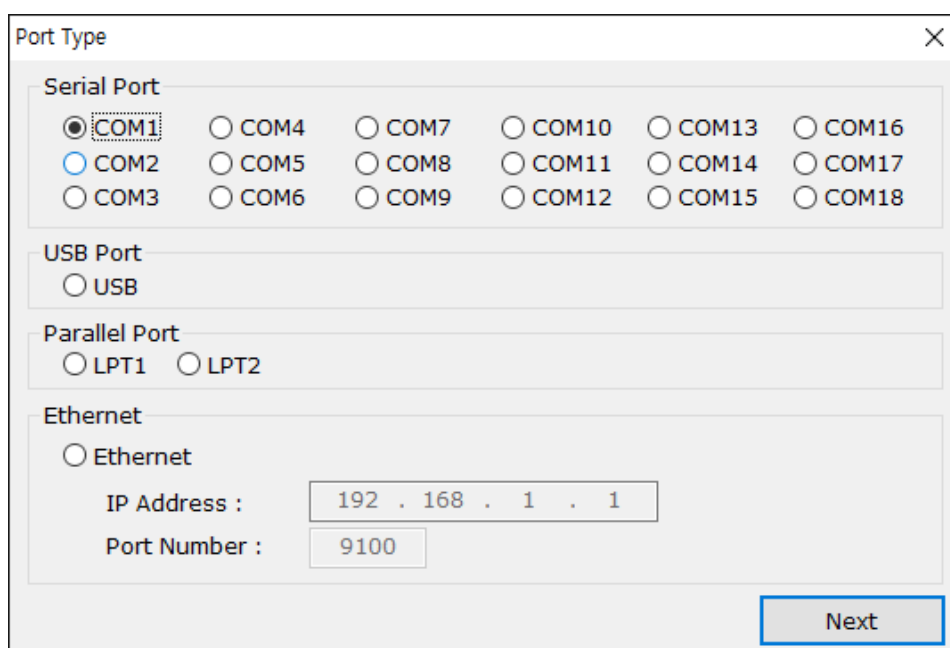
4-2 Installing on Windows VISTA / Server 2008 / 7 / 8 / Server 202012 / 10

4-2-1 Via Serial Port or Parallel Port

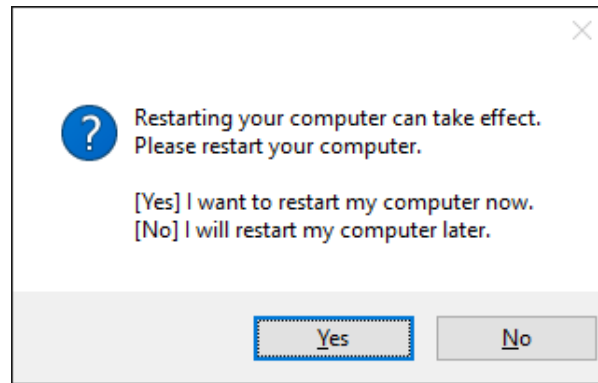
- 1) Double-click the Windows Driver installation file.
- 2) Click **Next**.



- 3) Select a COM or LPT port to be used, and then click **Next**.



4) Click **Yes** to reboot the PC.



5) Open the printer properties window in the Windows OS.

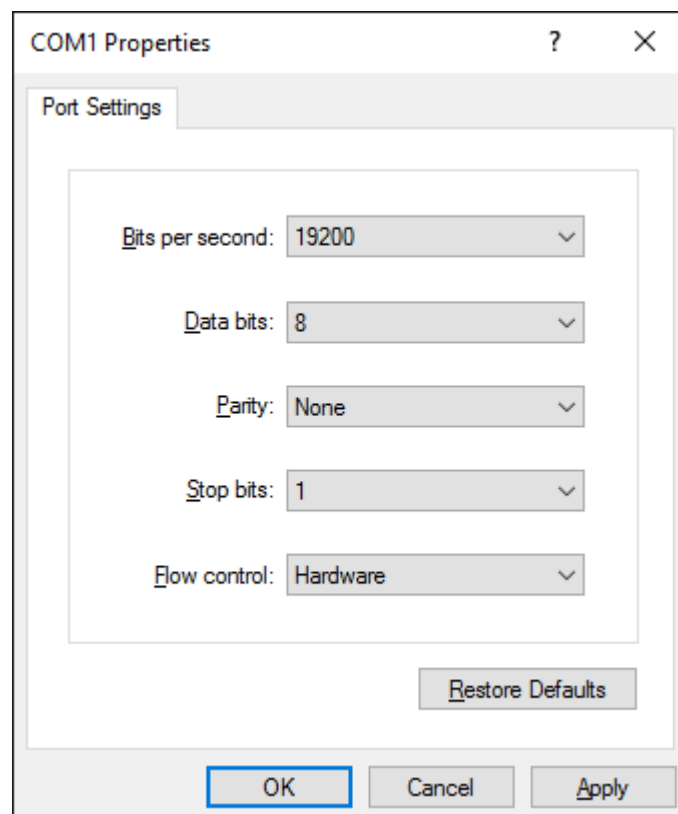
※ Control Panel – Hardware and Sound – Device and Printers.

6) In the **Ports** tab, click **Configure Port**.

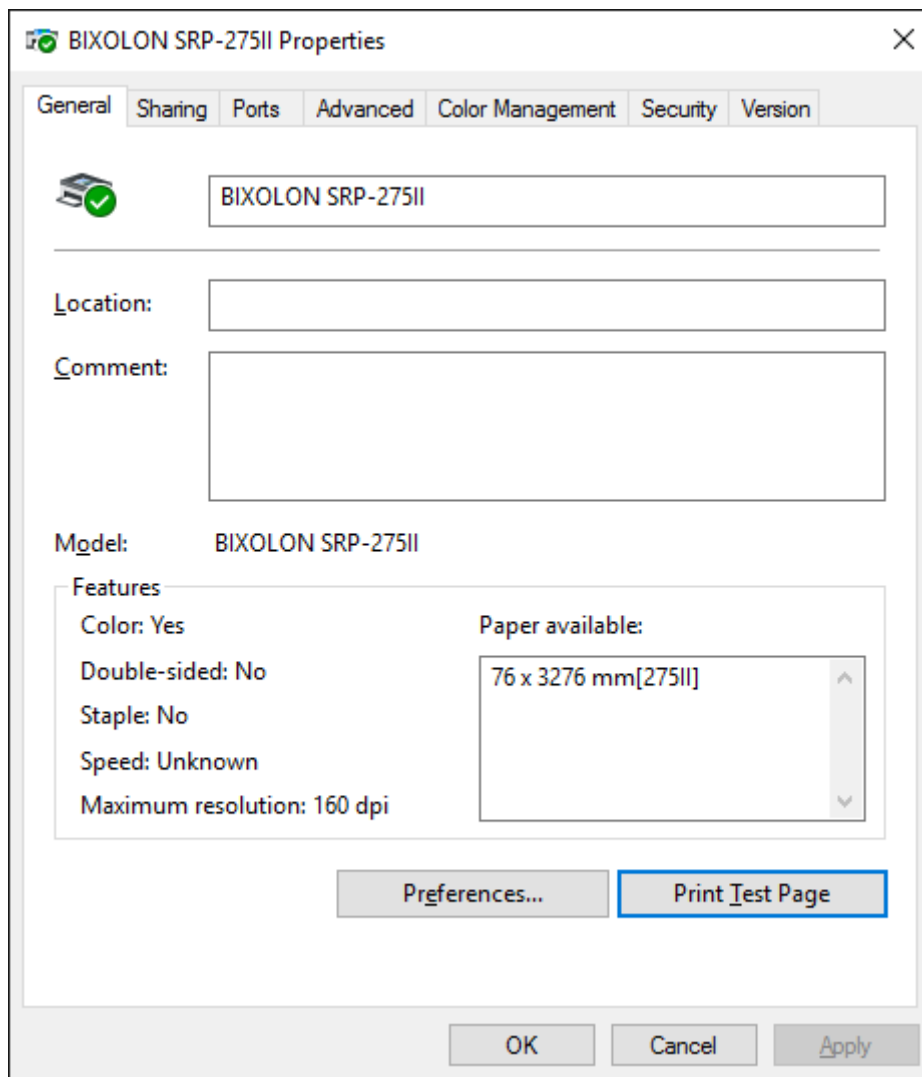
※ Skip this step if you selected a LPT port.

7) Match the communication settings to those of the printer. The communication settings of the printer can be performed by conducting a self-test.

※ Skip this step if you selected a LPT port.

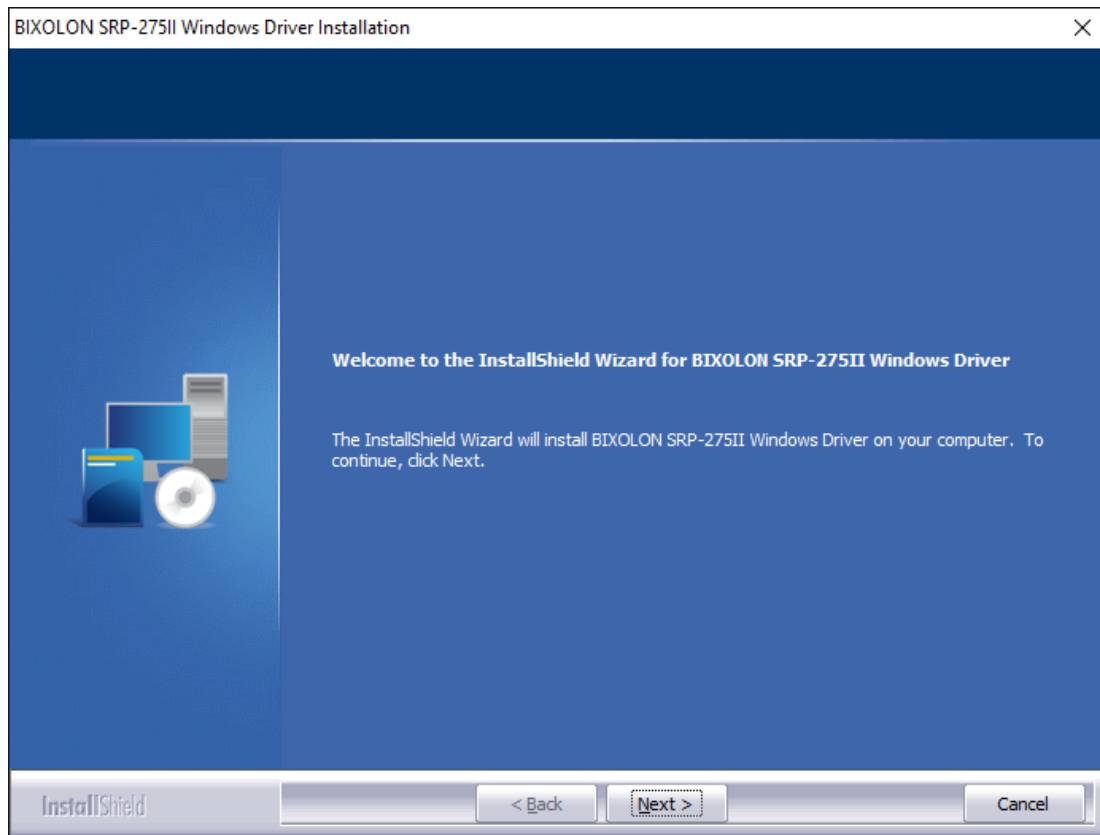


8) Click **Print Test Page** and check printing status. Proper installation of the driver is indicated if the test page is printed normally.

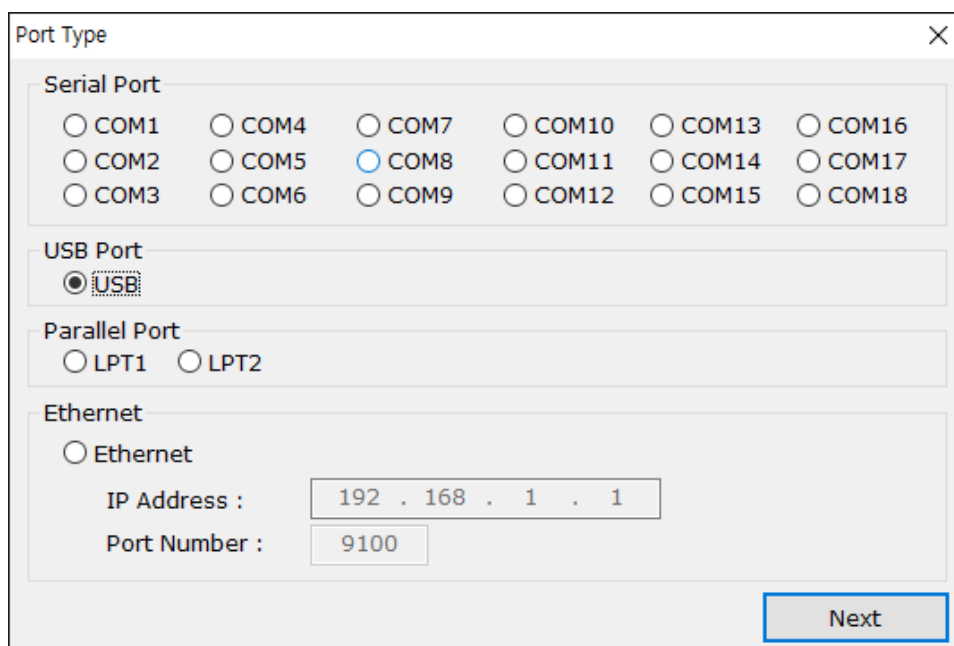


4-2-2 Via USB Port

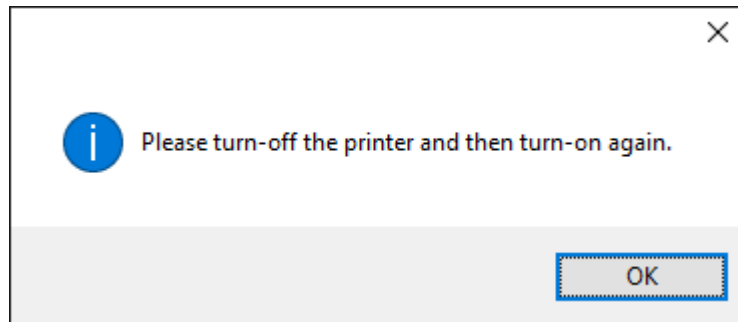
- 1) Double-click the Windows Driver installation file.
- 2) Click **Next**.



- 3) Select **USB** and then click **Next**.



4) Click **OK**.

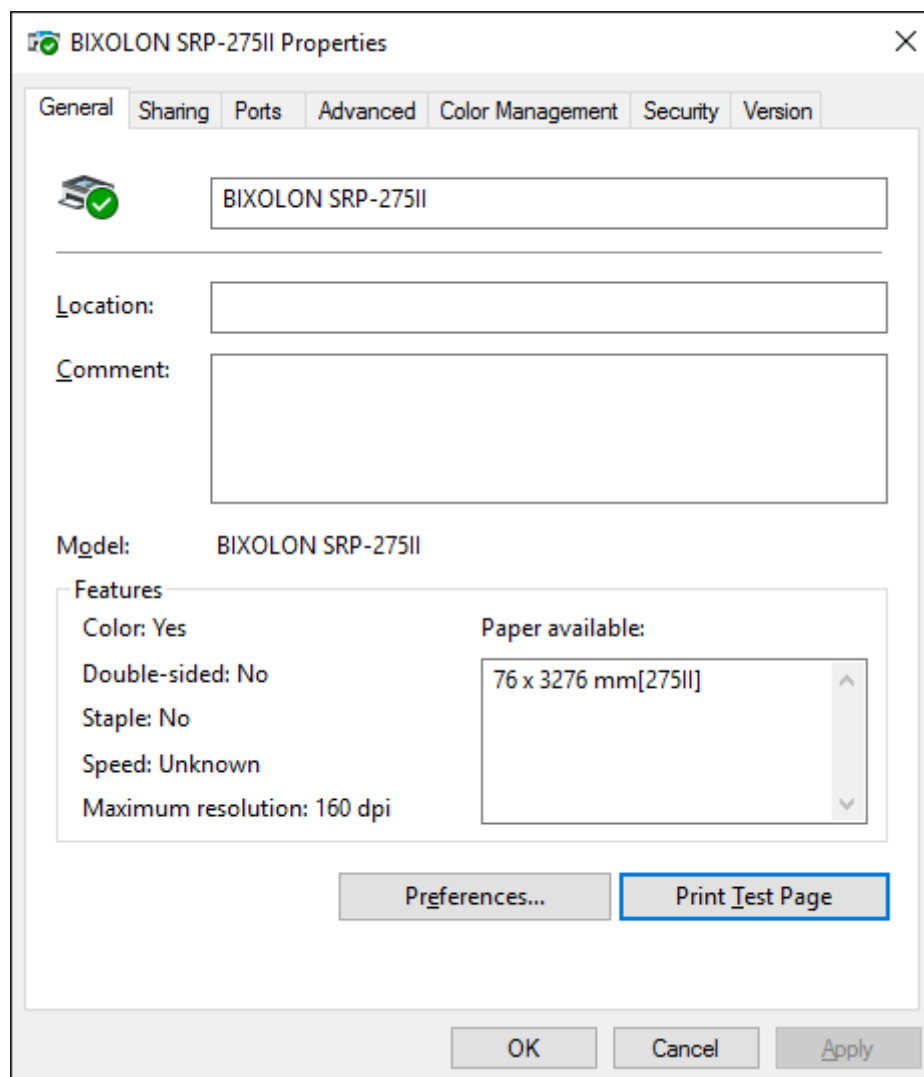


5) Turn off the printer and then turn it on. The printer driver will be installed automatically.

6) Open the printer properties window in the Windows OS.

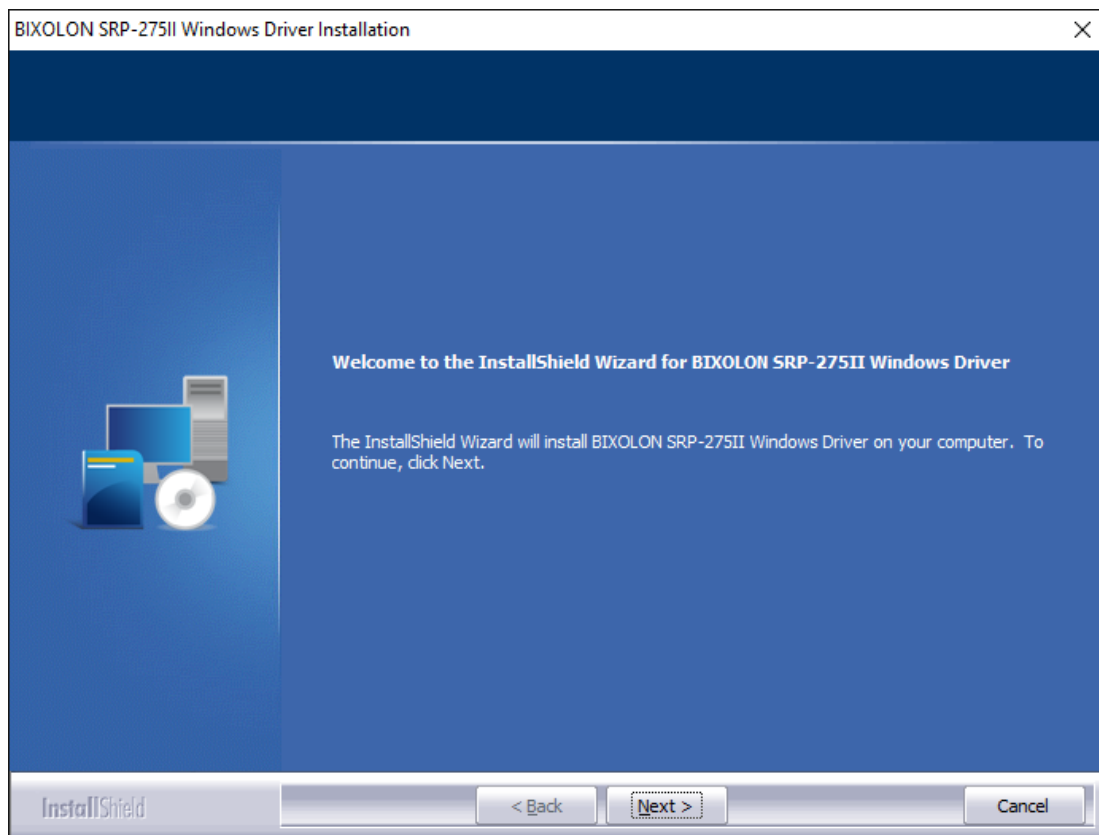
※ Control Panel – Hardware and Sound – Device and Printers.

7) Click **Print Test Page** and check printing status. Proper installation of the driver is indicated if the test page is printed normally.

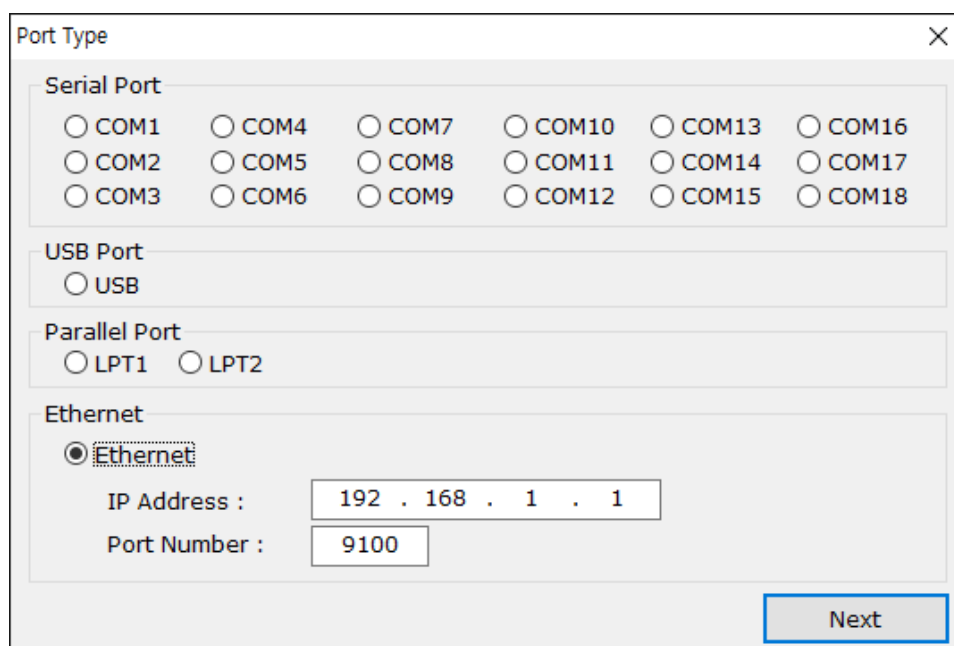


4-2-3 Via Ethernet Port

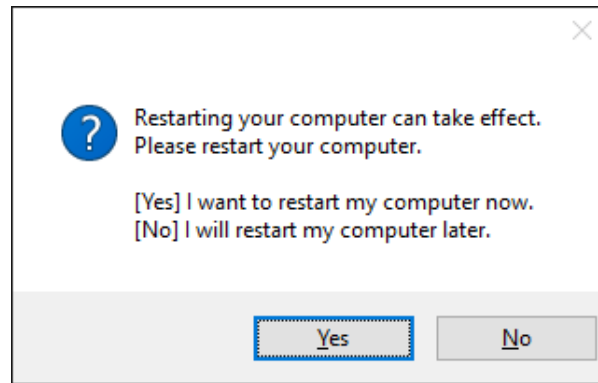
- 1) Double-click the Windows Driver installation file.
- 2) Click **Next**.



- 3) Select **Ethernet**.
- 4) Enter the IP address and port number, and then click **Next**.



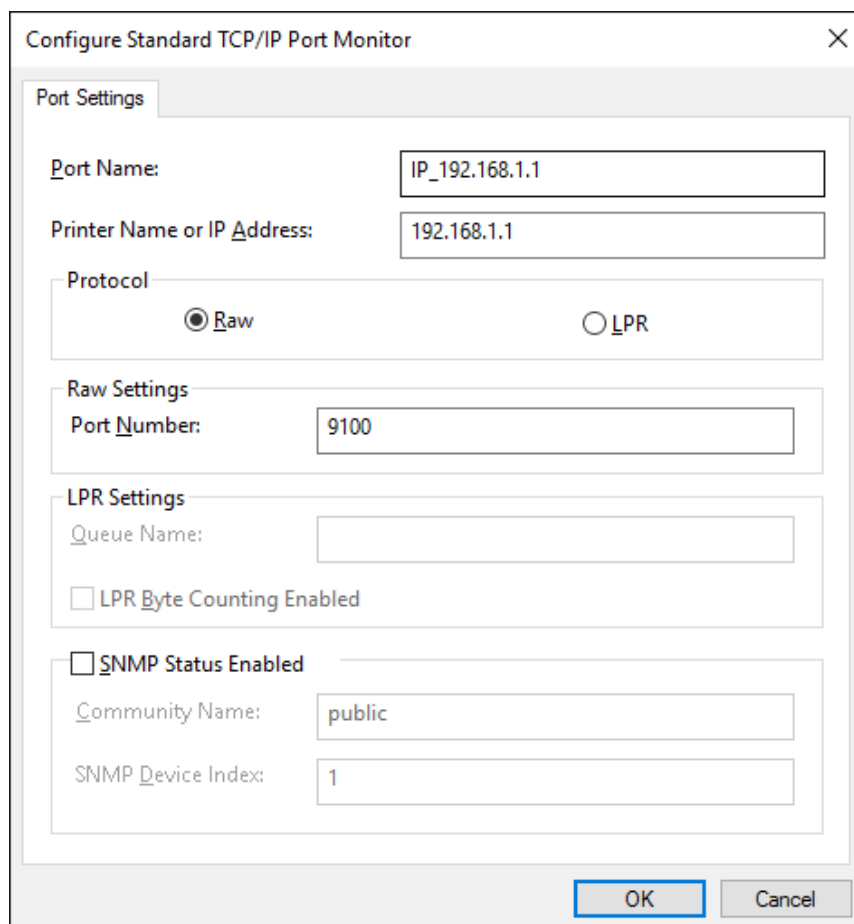
5) Click **Yes** to reboot the PC.



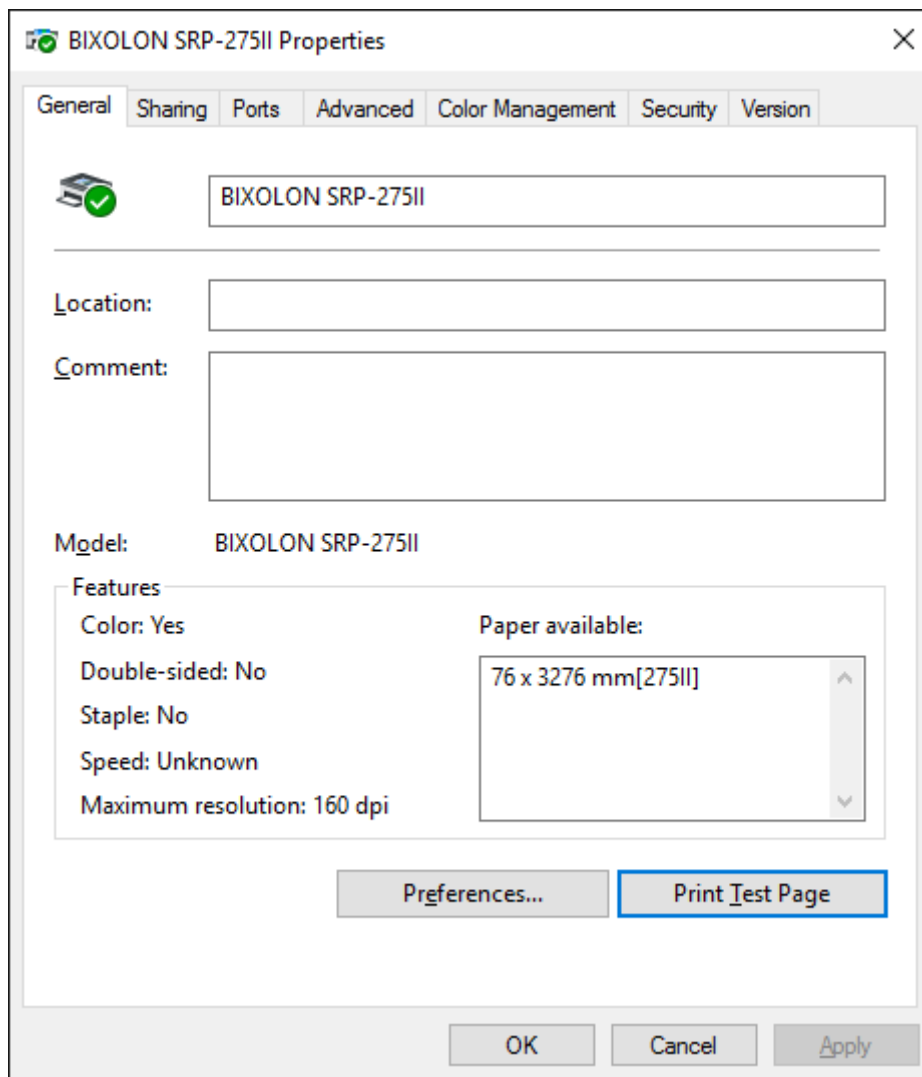
6) Open the printer properties window in the Windows OS.
 ※ Control Panel – Hardware and Sound – Device and Printers.

7) In the **Ports** tab, click **Configure Port....**

8) Match the communication settings to those of the printer.
 ※ The “LPR” protocol is not supported with this printer.



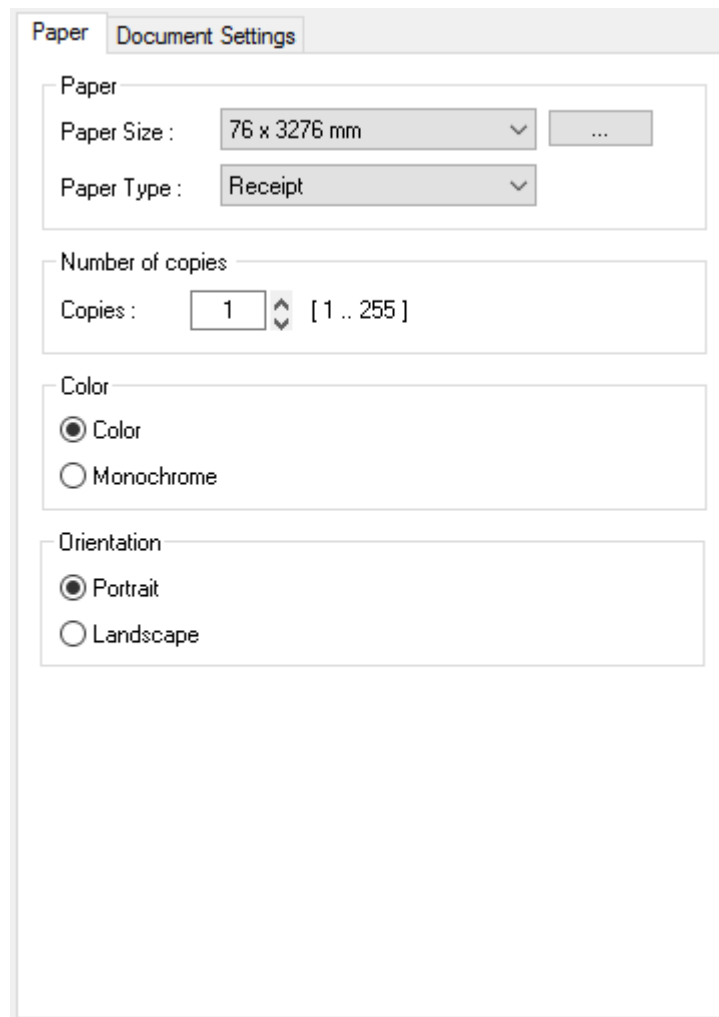
9) Click **Print Test Page** and check printing status. Proper installation of the driver is indicated if the test page is printed normally.



5. Windows Driver Settings

The following functions can be configured after installing the Windows driver.

5-1 Paper



- 1) Open the Printer Properties window for the corresponding OS.
- 2) In the **General** tab, click **Preferences** (Printing Preferences).
- 3) Click the **Paper** tab.

5-1-1 Paper Size

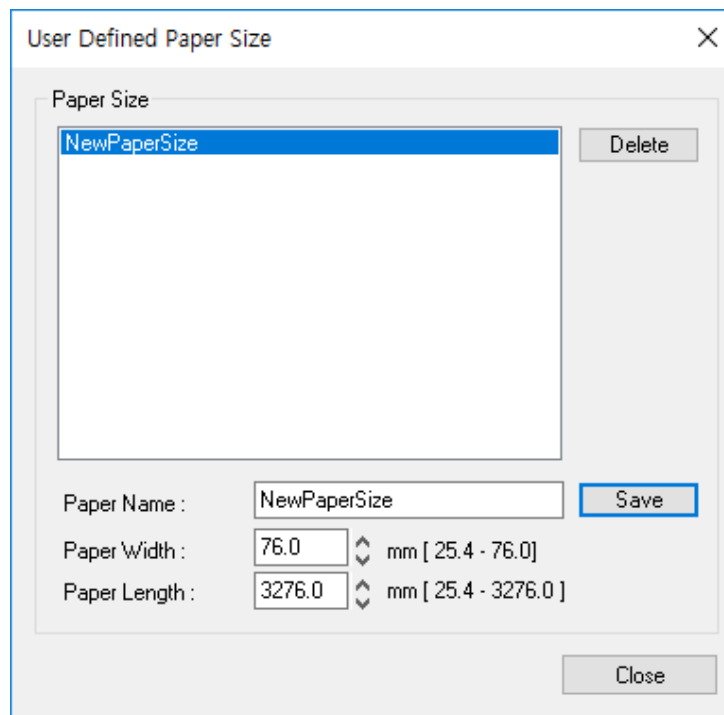
Paper size of 76 x 3276 mm is selected by default, and the following sizes can be selected.

76 x 297 mm

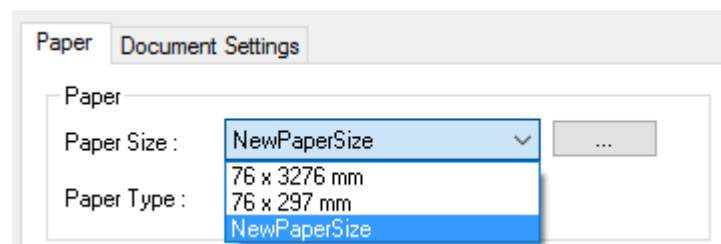
76 x 3276 mm

If a custom paper size is required, click “...” to add or update a custom paper size. Click **Save** after specifying the paper width/length and a paper name. If the specified paper name already exists on the system, you can update the paper width/length.

- Paper Width : 25.4 mm (Min) ~ 76.0 mm (Max)
- Paper Length : 25.4 mm (Min) ~ 3276.0 mm (Max)



You can choose the new paper size on the **Paper Size** combo-box after adding a paper size.



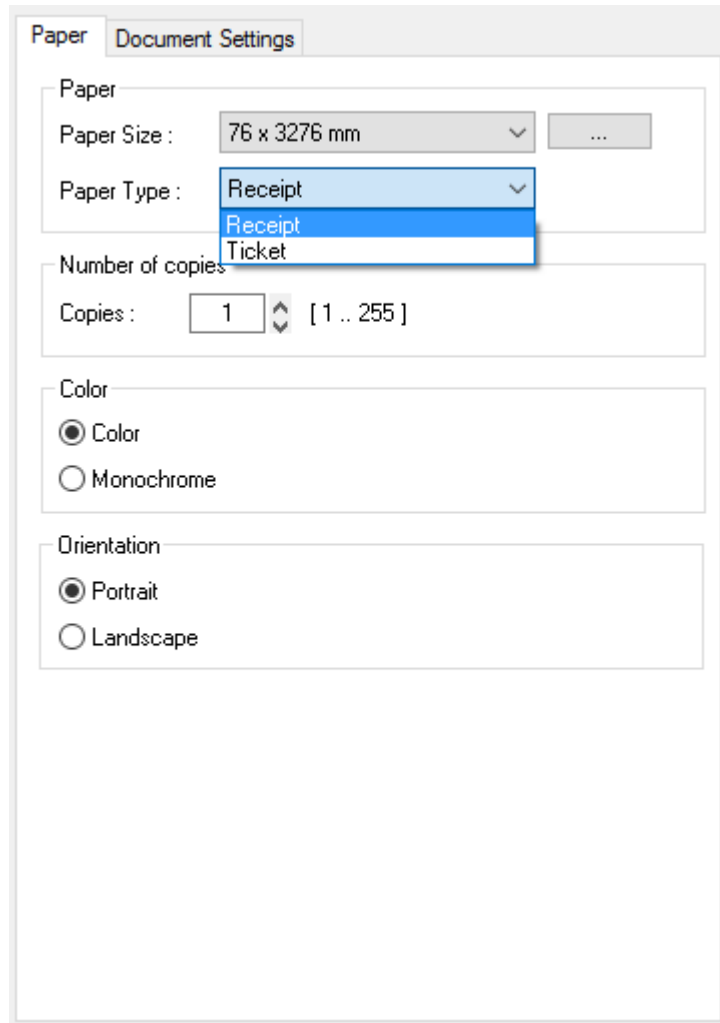
- Delete button** : Deletes the paper size selected in the list.
- Save button** : Adds a new paper size or update the paper size selected in the list if the paper name already exists on the system.

5-1-2 Paper Type

You can choose **Receipt** or **Ticket** as paper types. Receipt allows flexible paper length according to the data length. Ticket print in fixed length even the print data is short. The default setting is Receipt.

Receipt : Receipt allows flexible paper length according to the data length.

Ticket : Ticket print in fixed length even the print data is short.



5-1-3 Copies

Copies are printed by specifying the copy count. The copy count is set to 1 by default. Set this value bigger than 1 to set the number of copies to print. The value should be within the range of 1 to 255.

5-1-4 Color

The printer can print by using black and red, or by using black only. Select **Monochrome** if you want to use black color only.

5-1-5 Orientation

Printing orientation can be set to **Portrait** (which is the default) or **Landscape**. It is not possible to use printer fonts (device fonts) in landscape.

Portrait : Printing in the vertical direction.

Landscape : Printing in the horizontal direction.

5-2 Document Settings

Paper **Document Settings**

Send Command

Start Doc :

Start Page :

End Page :

End Doc :

Example : <1B4A00> or <1B>J<00>

Cash Drawer

Open before printing #1 50 [ms]

Open before printing #2 50 [ms]

Open after printing #1 50 [ms]

Open after printing #2 50 [ms]

Line Feed

Line-feeds after printing : 0 [0 .. 99]

Paper Cut

Page / Job : No Cut / No Cut

Page / Job : No Cut / Partial Cut

Page / Job : Partial Cut / Partial Cut

- 1) Open the Printer Properties window for the corresponding OS.
- 2) In the **General** tab, click **Preferences** (Printing Preferences).
- 3) Click the **Document Settings** tab.

5-2-1 Send Commands

The Windows driver serves to receive the content for print from an application and send it to the printer. The Send Commands function allows for the addition of desired commands at the start or end of the print content.

Start Doc : Addition of command at the beginning of the document.
Start Page : Addition of command at the beginning of the page.
End Page : Addition of command at the end of the page.
End Doc : Addition of command at the end of the document.

For more information about the hexadecimals that can be entered in “Start Doc”, “Start Page”, “End Page” and “End Doc”, refer to the Commands Manual.

5-2-2 Cash Drawer

To open a cash-drawer before printing, tick “Open before printing #1” or “Open before printing #2” in the “Cash Drawer” and then click “OK”.

To open a cash-drawer after printing, tick “Open after printing #1” or “Open after printing #2” in the “Cash Drawer” and then click “OK”.

5-2-3 Line Feed

Enter the number between 0 and 99 for adding blank lines at the end of printing.

5-2-4 Paper Cut

Paper can be cut at the end of each page or each document (job).

Page/Job : No Cut / No Cut : Paper is not cut after printing.
Page/Job : No Cut / Partial Cut : Paper is cut at the end of each document (Job).
Page/Job : Partial Cut / Partial Cut : Paper is cut at the end of each page.

6. Windows Driver Specifications

6-1 Printer fonts

This Windows driver supports various printer fonts (device fonts) in the following table. Printing using these fonts is faster than using Windows fonts provided by the operating system.

Standard Printer Fonts

| Printer Fonts | | | Size (Dot) | Size (Point) |
|---------------|----------------|---------------|-----------------|--------------|
| FontA1x1 | FontA1x1[Ext.] | FontA1x1[255] | FontA1x1(9x9) | 9 |
| FontA1x2 | FontA1x2[Ext.] | FontA1x2[255] | FontA1x2(9x18) | 18 |
| FontA2x1 | FontA2x1[Ext.] | FontA2x1[255] | FontA2x1(18x9) | 9 |
| FontA2x2 | FontA2x2[Ext.] | FontA2x2[255] | FontA2x2(18x18) | 18 |
| FontB1x1 | FontB1x1[Ext.] | FontB1x1[255] | FontB1x1(7x9) | 9 |
| FontB1x2 | FontB1x2[Ext.] | FontB1x2[255] | FontB1x2(7x18) | 18 |
| FontB2x1 | FontB2x1[Ext.] | FontB2x1[255] | FontB2x1(14x9) | 9 |
| FontB2x2 | FontB2x2[Ext.] | FontB2x2[255] | FontB2x2(14x18) | 18 |

Printer Fonts for Korean and Chinese

| Printer Fonts | Size (Dot) | Size (Point) |
|-----------------|------------------------|--------------|
| Korean1x1 | Korean1x1 (17x9) | 16 |
| Korean1x2 | Korean1x2 (17x18) | 32 |
| Korean2x1 | Korean2x1 (34x9) | 16 |
| Korean2x2 | Korean2x2 (34x18) | 32 |
| Chinese2312_1x1 | Chinese2312_1x1(16x16) | 16 |
| Chinese2312_1x2 | Chinese2312_1x2(16x32) | 32 |
| Chinese2312_2x1 | Chinese2312_1x1(32x16) | 16 |
| Chinese2312_2x2 | Chinese2312_1x2(32x32) | 32 |
| ChineseBIG5_1x1 | ChineseBIG5_1x1(16x16) | 16 |
| ChineseBIG5_1x2 | ChineseBIG5_1x2(16x32) | 32 |
| ChineseBIG5_2x1 | ChineseBIG5_1x1(32x16) | 16 |
| ChineseBIG5_2x2 | ChineseBIG5_1x2(32x32) | 32 |

Printer Fonts are defined as follows.

1) FontA1x2

- ANSI Character code support (Code Page 1252)
- Character size (dot): 9 x 18 (double height)
- Character size (point): 18

2) FontA1x2[Ext.]

- IBM expansion Character code support (Code Page 437)
- Character size (dot): 9 x 18 (double height)
- Character size (point): 18

3) FontA1x2[255]

- Buyer exclusive code support
- Character size (dot): 9 x 18 (double height)
- Character size (point): 18

6-2 Special Functions

This Windows driver supports the special functions as shown in the following table. Select the **FontControl** font first and use the characters in the table to use the special functions. Take care as this function is not for printing general texts.

| Character | Special Function |
|-----------|---|
| 5 | HT (0 x 09) is output |
| 6 | LF (0 x 0A) is output |
| 7 | CR (0 x 0D) is output |
| a | Open Cash drawer 2 (50ms drive pulse width) |
| b | Open Cash drawer 2 (100ms drive pulse width) |
| c | Open Cash drawer 2 (150ms drive pulse width) |
| d | Open Cash drawer 2 (200ms drive pulse width) |
| e | Open Cash drawer 2 (250ms drive pulse width) |
| f | Open Cash drawer 2 (50ms drive pulse width) without feeding |
| g | Cut without paper feeding |
| w | Align text to the left |
| x | Align text to the center |
| y | Align text to the right |
| A | Open Cash drawer 1 (50ms drive pulse width) |
| B | Open Cash drawer 1 (100ms drive pulse width) |
| C | Open Cash drawer 1 (150ms drive pulse width) |
| D | Open Cash drawer 1 (200ms drive pulse width) |
| E | Open Cash drawer 1 (250ms drive pulse width) |
| F | Open Cash drawer 1 (50ms drive pulse width) without feeding |
| G | Prints the NV bitmap image saved in the 00 address |
| H | Prints the NV bitmap image saved in the 01 address |
| I | Prints the NV bitmap image saved in the 02 address |
| J | Prints the NV bitmap image saved in the 03 address |
| K | Prints the NV bitmap image saved in the 04 address |
| P | Cut (partial cut) |

1) Sample Use

If the **FontControl** font is selected and 6 is entered, the LF (Line Feeding) operation is activated. (This does not entail the printing of the character "6".)

2) "FontControl" Font Function

| Printer Font for Special Function | Function | Size (Point/Dot) |
|-----------------------------------|--|------------------|
| FontControl | Justification (Left/Center/Right) Output HT, Output LF, Output CR NV bitmap printing | (9 / 9x9) |

7. Use of Windows Driver

7-1 Use of Visual Basic

This section contains example codes to control the printer using Windows driver with Visual Basic. Sample programs are included in the CD.

7-1-1 Windows Driver Selection

The following code is an example of the selection of the "BIXOLON SRP-275II" Windows Driver.

```
For Each prnPrinter In Printers
    If prnPrinter.DeviceName = "BIXOLON SRP-275II" Then
        Set Printer = prnPrinter
    Exit For
End If
Next
```

7-1-2 Text Printing

The following example code explains how to print texts using Windows fonts and printer fonts (device fonts).

```
'Print in Windows font
Printer.FontSize = 9
Printer.FontName = "Arial"
Printer.Print "Arial Test"

'Print in printer font
Printer.FontSize = 9
Printer.FontName = "FontA1x1"
Printer.Print "FontA1x1Test"

Printer.EndDoc
```

7-2 Use of WordPad

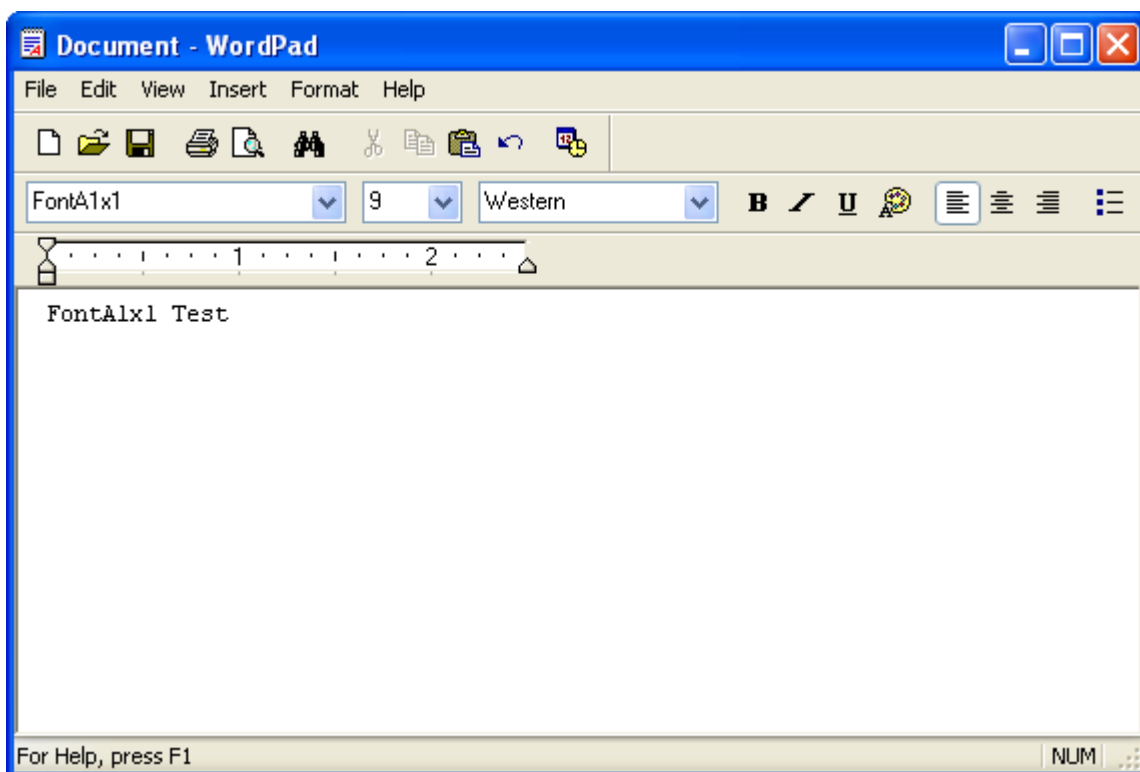
7-2-1 WordPad Environment Settings

Launch WordPad, set the printing related options as follows, and test the printer with WordPad.

- Select printer
Select "Print" from the "File" menu, and select the printer (BIXOLON SRP-275II).
- Set paper size, orientation, margin, etc.
Select the "Page Setting" from "File" menu, and set paper size, orientation, and margin.

7-2-2 Text Printing

Print the text from WordPad using the Windows driver of the printer.



- 1) Select the desired font from the Font menu (FontA1x1).
- 2) Select the desired font size (9).
- 3) Enter the text to be printed in WordPad.
- 4) Click the **Print** button in the toolbar to print.