

BIXOLON®

Printer Driver Manual
Label Printer

Rev. 5.00

<http://www.bixolon.com>

Introduction

This printer driver Manual provides information on installation, uninstallation, detailed specifications, and usage of the printer's Windows Driver according to PC operating system (OS).

It is advisable to read the contents of this manual carefully before using the customer display for the first time.

Table of Contents


1. Supported Operating System (OS)	4
2. Supported Printers	4
3. Printer Driver Preparation	4
4. Printer Driver Installation	5
4-1 Printer Driver Installation	5
4-1-1 Introductory Steps	5
4-1-2 Local Port	6
4-1-3 Network Port	7
4-1-4 USB Port	8
4-1-5 Other Port	9
4-1-6 Printer Options	10
4-1-7 Font Downloader Installation.....	12
4-2 Printer Driver Uninstallation.....	14
4-2-1 Printer Driver Uninstallation	14
4-2-2 Printer Driver Package Uninstallation.....	16
4-3 Printer Driver Update	18
4-4 Steps for downloading fonts	20
5. Printer Driver Settings	25
5-1 Printing Preferences.....	25
5-2 Adding new paper size	26
6. Specifications	27
6-1 Specifications	27
6-2 Paper Size.....	28
6-3 Barcode Fonts.....	28

1. Supported Operating System (OS)

The following operating systems are supported for usage.

Microsoft Windows XP SP3 (32bit, 64bit)
Microsoft Windows Server 2003 SP1 (32bit)
Microsoft Windows Server 2003 (64bit)
Microsoft Windows VISTA (32bit, 64bit)
Microsoft Windows Server 2008 (32bit, 64bit)
Microsoft Windows Server 2008 R2 (64bit)
Microsoft Windows 7 (32bit, 64bit)
Microsoft Windows 8 (32bit, 64bit)
Microsoft Windows Server 2012 (64bit)
Microsoft Windows 10 (32bit, 64bit)



- Serial and Parallel printer port do not work on Windows 10 version 1511 (OS Build 105860.104) specific. We recommend you to install the latest Windows 10 update through Windows Update before installing Windows Driver.
- You can download and install the Windows Update in the Update & security tab of the Settings menu.
( > Settings > Update & security > Windows Update).

2. Supported Printers

The Windows driver is available for the following BIXOLON printers.

MX4000/MX4030/MX4060
SLP-TX220/TX223, TX420/TX423, TX400(RFID)/TX403(RFID)
SLP-DX220/DX223, DX420/DX423
SLP-DL410/DL413
SLP-T400/T403, T400R/T403R
SLP-D220/D223, D420/D423
SRP-770/770II/770III/E770III
SPP-L3000

3. Printer Driver Preparation

The Windows Driver is included in the enclosed CD, and the latest file version can be downloaded from BIXOLON website. (www.bixolon.com)

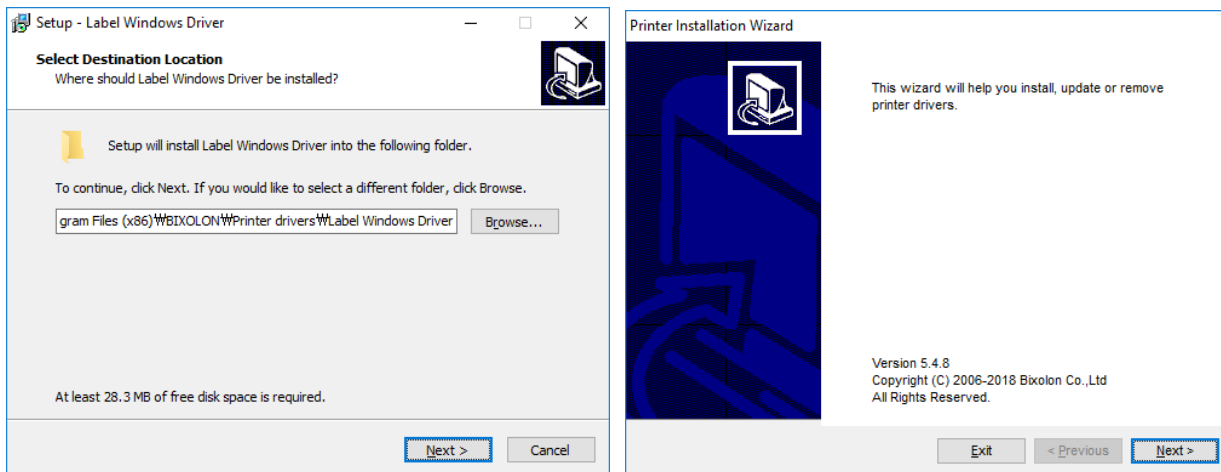
4. Printer Driver Installation

4-1 Printer Driver Installation

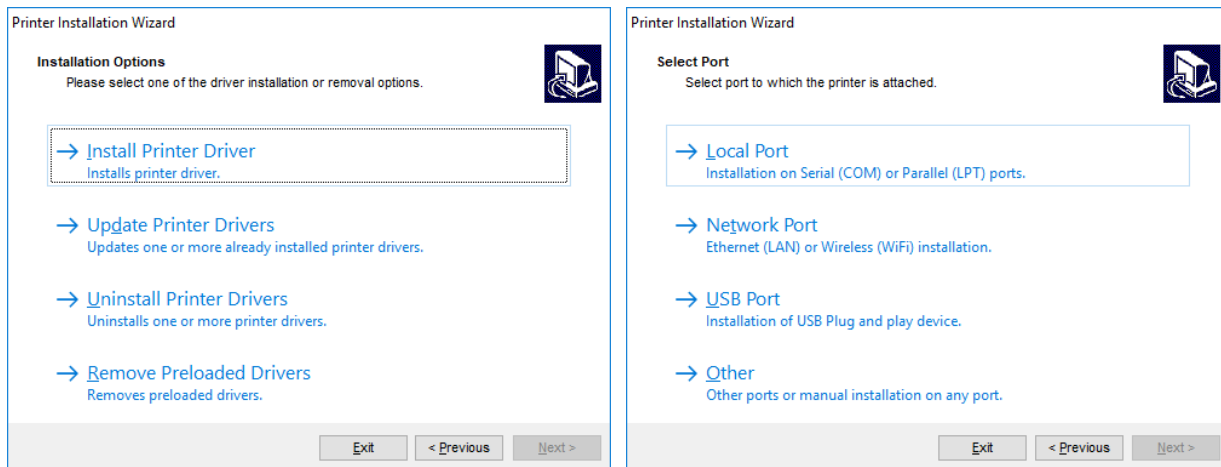
- Run “Software_Label_Windows_Driver_V5.x.x.xxxx.exe” to install printer driver, and follow the steps below.

4-1-1 Introductory Steps

- 1) Set the installation directory, and then click “Next”.
Click “Next” again on “Printer Installation Wizard” window.



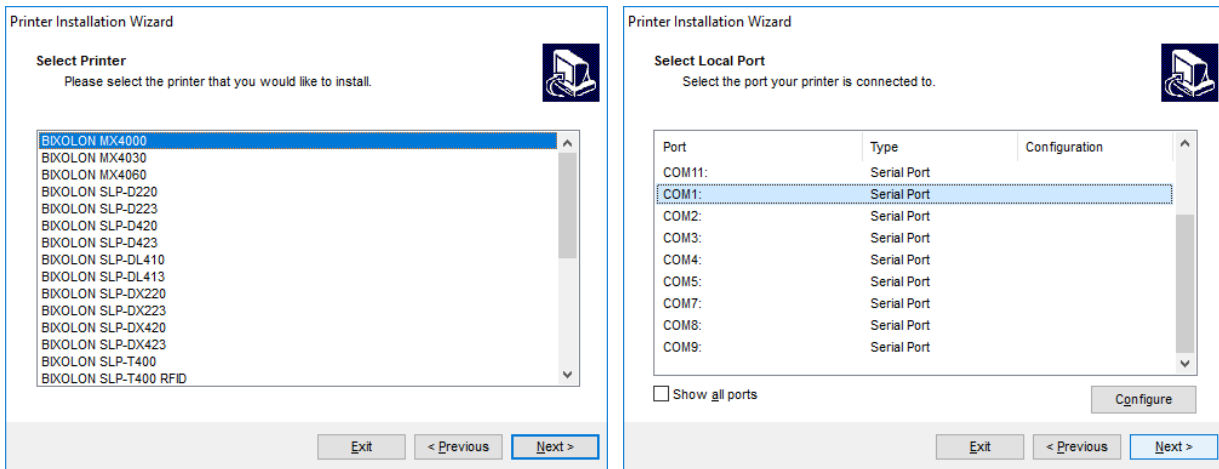
- 2) Click “Install Printer Driver”, and then select the port to which the printer is attached. Refer to the contents in this manual about printer port installation.



Ports	Description	Reference
Local port	Serial (COM) or Parallel (LPT) ports	4-1-2
Network port	Ethernet (LAN) or Wireless (Wi-Fi) installation	4-1-3
USB port	USB Plug and play device.	4-1-4
Other	Manual installation on any port.	4-1-5

4-1-2 Local Port

1) Select the printer model and the local port to which your printer is connected.



Function	Description
Show all ports	display all available ports on the system.
Configure	set the appropriate port-specific values.

2) To configure the currently selected local port, click Configure. System dialog opens allowing you to set the appropriate port-specific values.



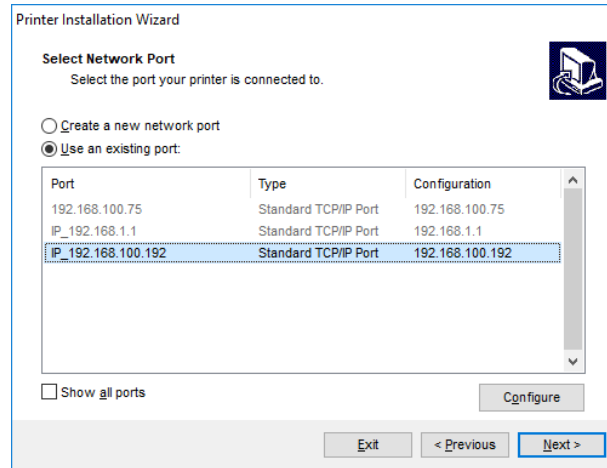
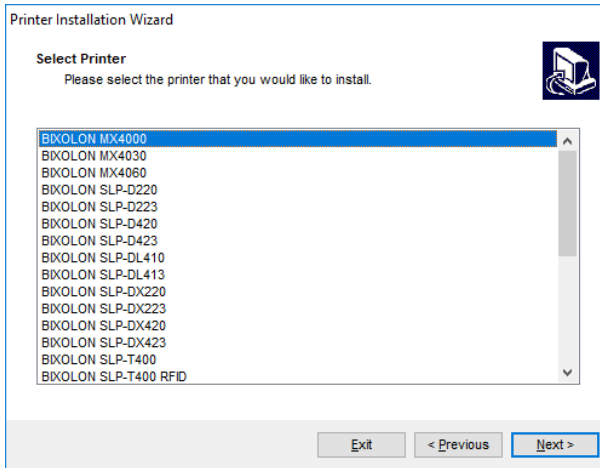
Note

Port(s) which are already taken by other printers are grayed-out.

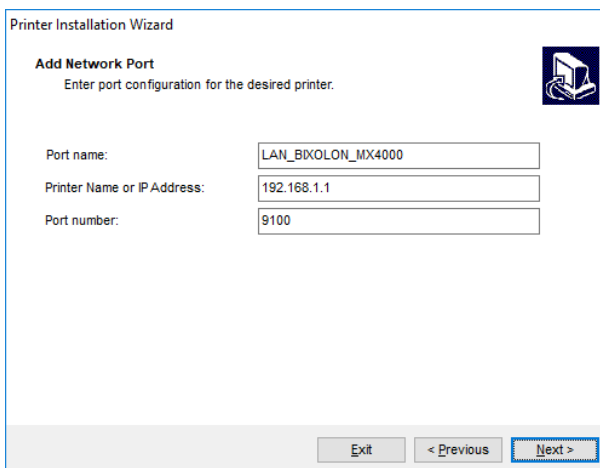
3) Click "Next" to proceed to Printer Options step. Refer to the description of printer options in 4-1-6 of this manual.

4-1-3 Network Port

- 1) Select the printer model and the network port to which your printer is connected. If there is no network ports to which your printer is connected in the list, select “Create a new network port” and then click “Next”.



“Create a new network port” option opens the Add Network Port window. Enter port configuration for the desired printer, and then click “Next”.



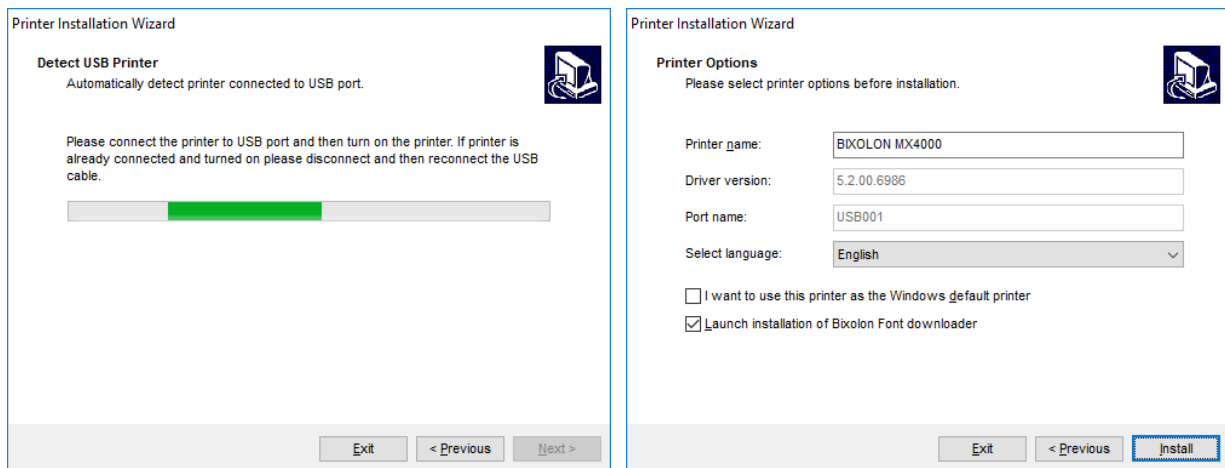
Installation Option	Description
Port name	defines the name for the newly created network port
Printer Name or IP Address	defines which printer (its name or IP address) connects to the newly created network port.
Port Number	number of the newly created network port. (default: 9100)

- 2) Click “Next” to proceed to Printer Options step. Refer to the description of printer options in 4-1-6 of this manual.

4-1-4 USB Port

When installing a USB printer, this application automatically detects the connected printer using its Plug and Play ID.

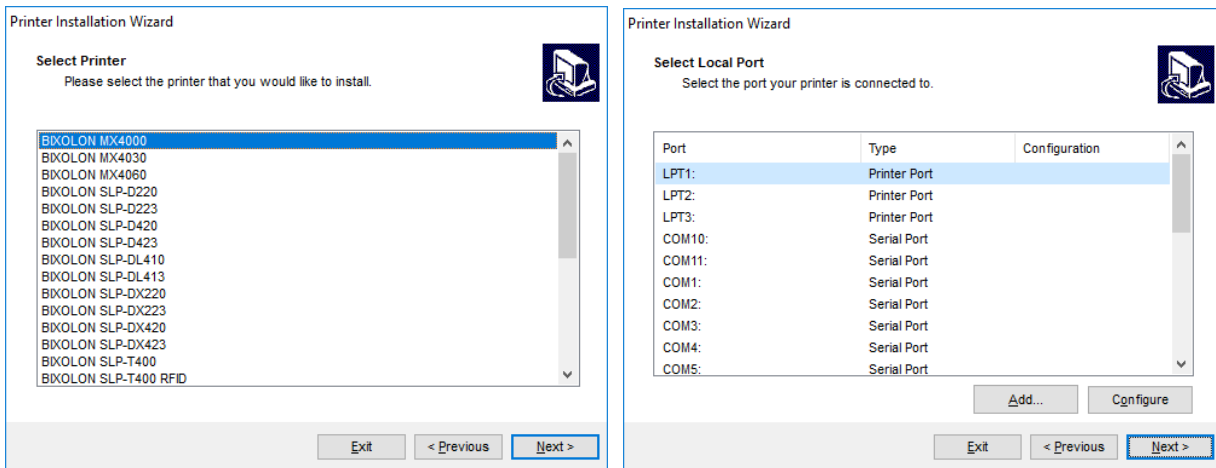
- 1) After connecting the printer to the USB port, turn on the printer. If the printer is already connected and powered on, disconnect and reconnect the USB cable.
- 2) If a printer connection is detected, it will automatically go to the end of the printer installation. Refer to the description of printer options in 4-1-6 of this manual and proceed to the next step.



4-1-5 Other Port

You can install the printer driver by manually selecting a dedicated port to connect to the printer or all available ports on your system. Follow the procedure below.

- 1) Select the appropriate printer model.



- 2) Select the port for connecting the printer. The port can either be an existing or a newly added one.

Funtion	Description
<u>A</u> dd... button	Creates a new port. Press the button to open Advanced TCP/IP Port Configuration window.
<u>C</u> onfigure button	Configures the local port

- 3) Click "Next" to proceed to Printer Options step. Refer to 4-1-6 in this manual.

4-1-6 Printer Options

Printer Options window allows you to set printer identity parameters.

Printer Option	Description
Printer Name	sets custom printer name to make it easily recognizable after the installation.
Driver Version	information about the current driver version.
Port Name	information about the currently used port.
Select language	defines driver user interface language.

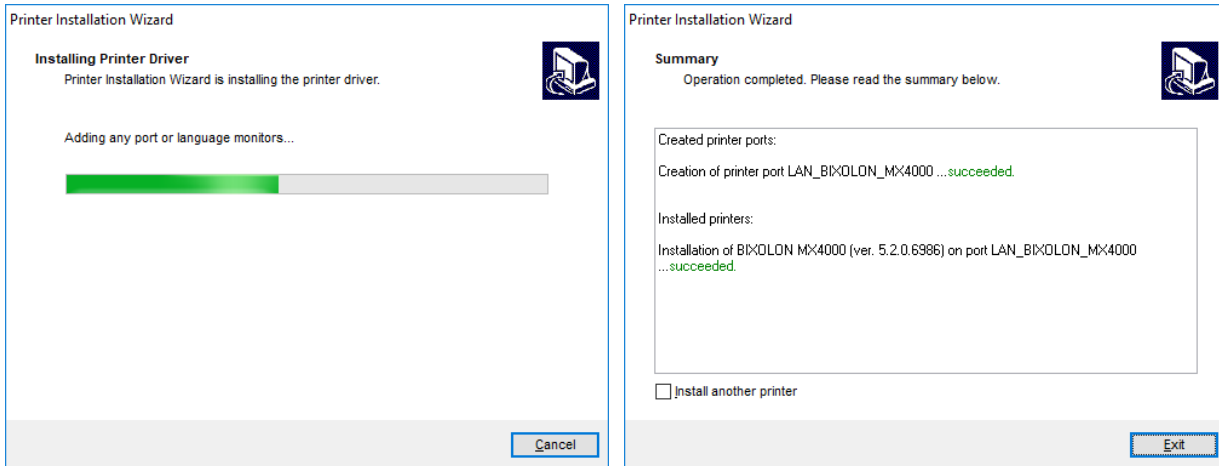
Enable “I want to use this printer as the Windows default printer” to set the current printer as the default system printer. And, enable “Launch installation of Bixolon Font downloader” to put true type fonts into the printer.

Click the "Install" to start installing the printer driver and font downloader. Please refer to 4-1-7 of this manual for a description of the additional installation procedure for the font downloader.

During the installation, uninstallation or update of the printer driver, “PrnInst.exe” application checks for applications that could lock the printer driver files. If detected, following windows can appear.

The following options are available in this case:

- Continue with the installation. New files are copied – installation is complete after restarting the computer.
- Stop the installation and restart the computer. After restarting, repeat the installation procedure.
- Close the applications that are locking the printer driver.

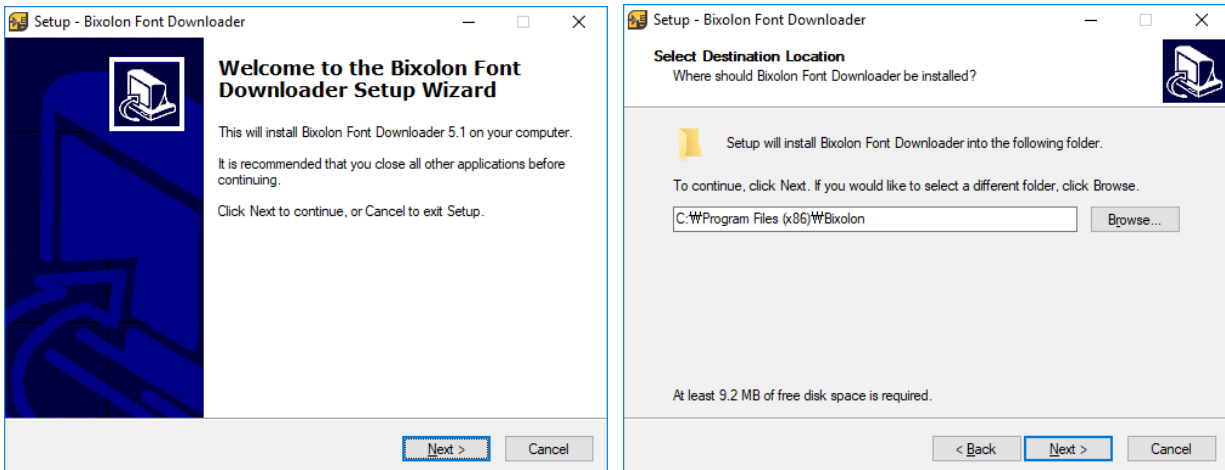


When the installation is complete, you will see the word "Succeeded". If you want to continue the installation of the printer, check the "Install another printer" checkbox and then click "Next". To exit the installation, click "Exit".

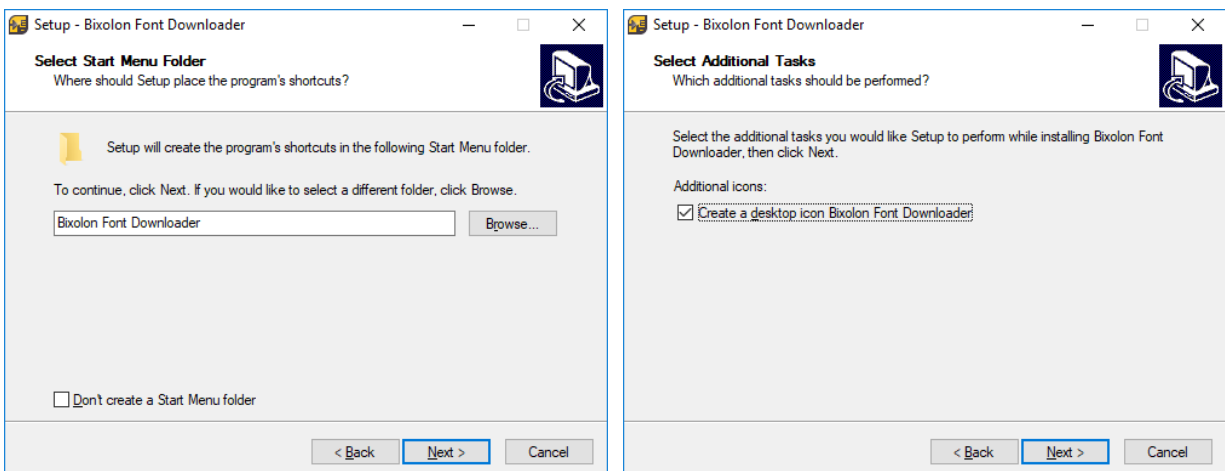
4-1-7 Font Downloader Installation

To install the font downloader, follow the procedure below.

- 1) Click "Next" to proceed to next step.
- 2) Specify the installation folder and click "Next".

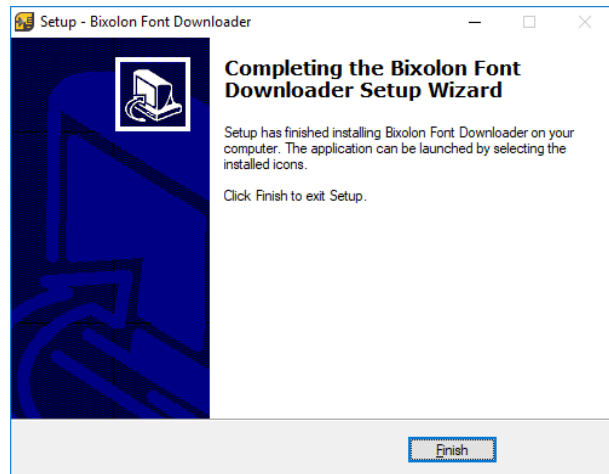
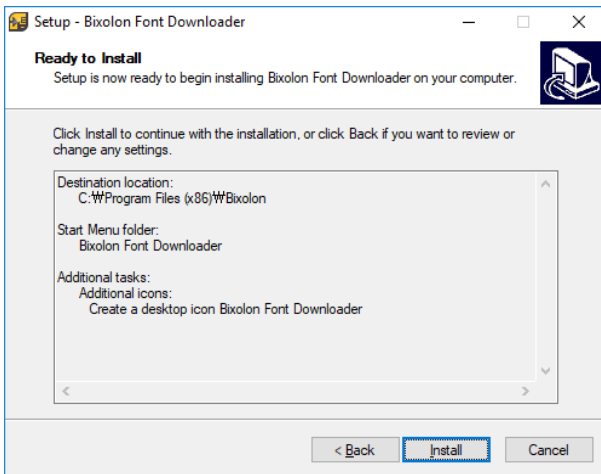


- 3) Check the name of the Start Menu folder to be created and click "Next".
- 4) Decide whether to create the shortcut icon and click "Next".



5) Review the contents for the installation and click the "Install".

6) Click "Finish" to complete the installation.



4-2 Printer Driver Uninstallation

- To remove a printer driver using “PrnInst.exe” application, follow these steps below.

4-2-1 Printer Driver Uninstallation

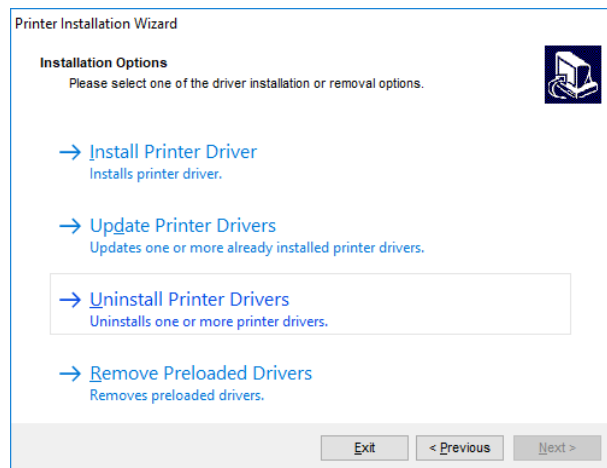
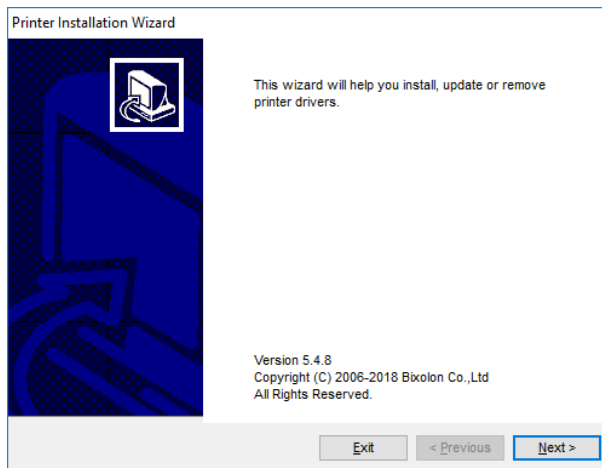
- 1) Run “PrnInst.exe” application. This application can be found in the default printer driver installation path. If you cannot find it, run the “Software_Label_Windows_Driver_V5.x.x.xxxx.exe” application.



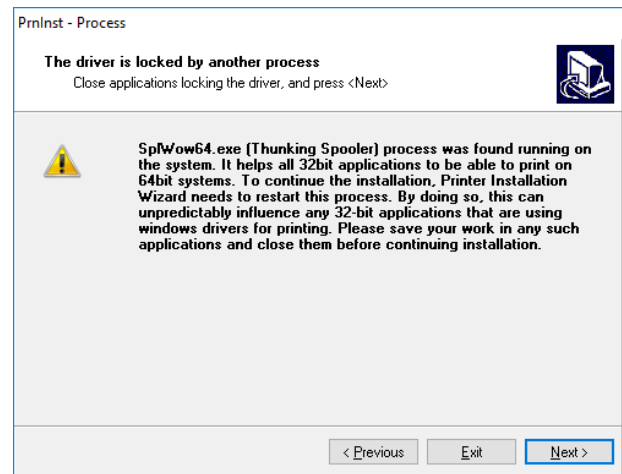
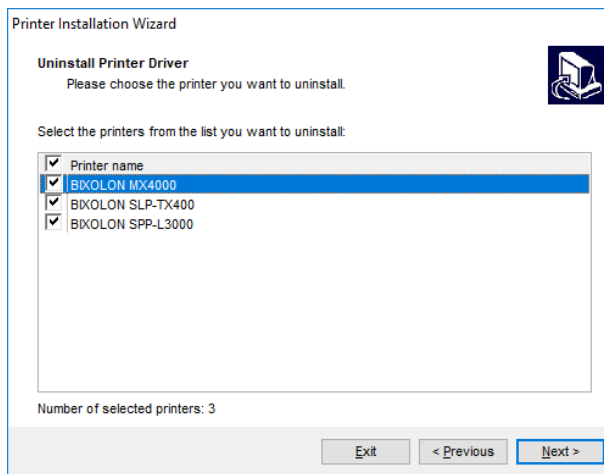
Note

Default Installation Path: C:\Program Files
(x86)\BIXOLON\Printer drivers\Label Windows Driver

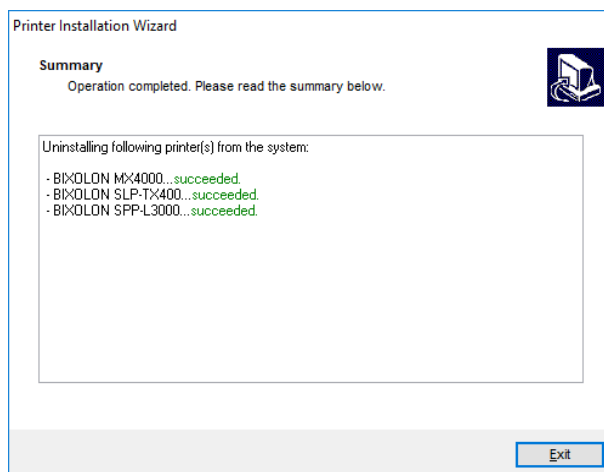
- 2) Click “Next” on the “Printer Installation Wizard” window.
- 3) Click “Uninstall Printer Drivers”.



- 4) Select the printer to be removed, and then click “Next >”. If you see a warning about “Splwow64.exe” during removing printer driver, click “Next”. After clicking “Next”, “PrnInst.exe” application restarts the Splwow64.exe process. This unlocks the printer driver and completes the uninstallation process.




- 5) Click "Exit" to complete the uninstallation.



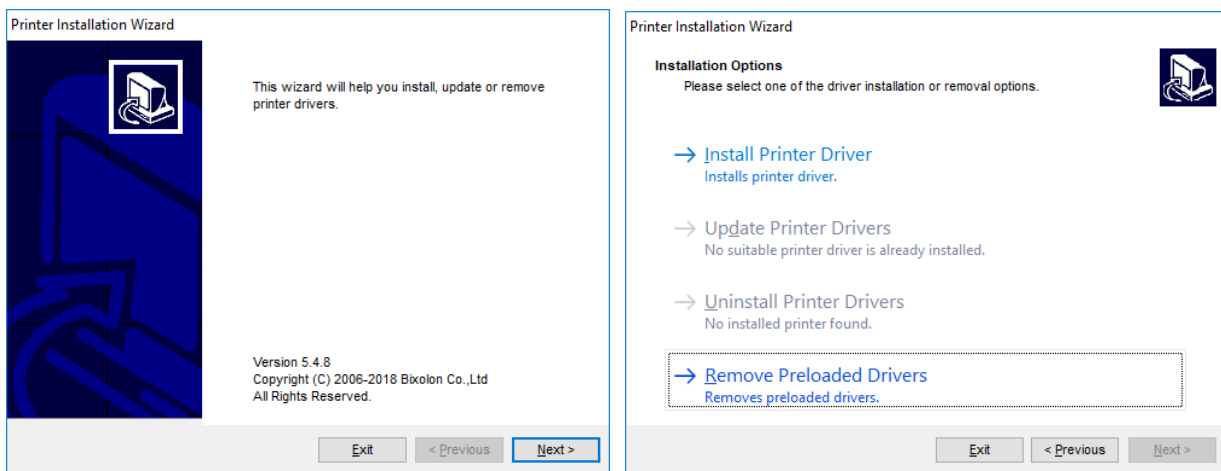
4-2-2 Printer Driver Package Uninstallation

To remove a printer driver package using “PrnInst.exe” application, follow these steps below.

- 1) Run “PrnInst.exe” application. This application can be found in the default printer driver installation path. If you cannot find it, run the “Software_Label_Windows_Driver_V5.x.x.xxxx.exe” application.

 Note	Default Installation Path: C:\Program Files (x86)\BIXOLON\Printer drivers\Label Windows Driver
---	--

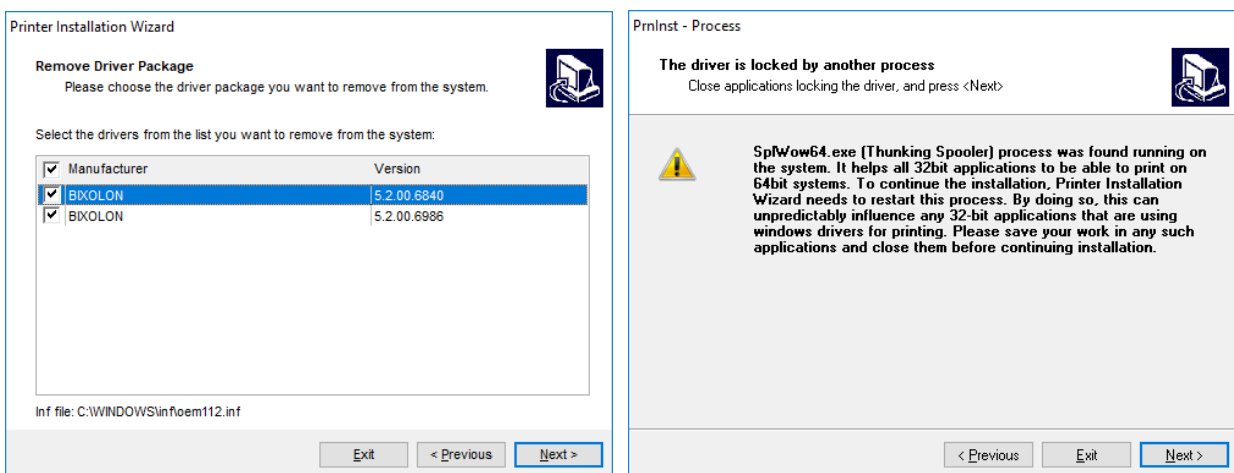
- 2) Click “Next” on the “Printer Installation Wizard” window.
- 3) Click “Remove Preloaded Drivers”.



The first screenshot shows the 'Printer Installation Wizard' main screen. It includes a printer icon, the text 'This wizard will help you install, update or remove printer drivers.', and version information: 'Version 5.4.8 Copyright (C) 2006-2018 Bixolon Co., Ltd All Rights Reserved.' The 'Next >' button is highlighted.

The second screenshot shows the 'Installation Options' screen. It lists three options: 'Install Printer Driver' (installs printer driver), 'Update Printer Drivers' (no suitable printer driver is already installed), and 'Uninstall Printer Drivers' (no installed printer found). The 'Remove Preloaded Drivers' option is highlighted with a dashed border.

- 4) Select the driver to be removed, and then click “Next”. If you see a warning about “Splwow64.exe” during removing printer driver package, click “Next”. After clicking “Next”, “PrnInst.exe” application restarts the Splwow64.exe process. This unlocks the printer driver and completes the uninstallation process.



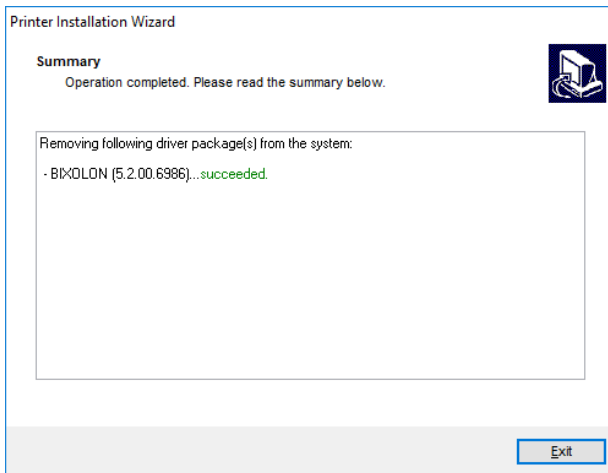
The first screenshot shows the 'Remove Driver Package' screen. It asks the user to choose the driver package to remove. A table lists the available drivers:

Manufacturer	Version
<input checked="" type="checkbox"/> BIXOLON	5.2.00.6840
<input checked="" type="checkbox"/> BIXOLON	5.2.00.6986

The 'Next >' button is highlighted.

The second screenshot shows a warning dialog titled 'PrnInst - Process'. The message states: 'The driver is locked by another process. Close applications locking the driver, and press <Next>'. A warning icon is present. The text below explains: 'SplWow64.exe [Thinking Spooler] process was found running on the system. It helps all 32bit applications to be able to print on 64bit systems. To continue the installation, Printer Installation Wizard needs to restart this process. By doing so, this can unpredictably influence any 32-bit applications that are using windows drivers for printing. Please save your work in any such applications and close them before continuing installation.' The 'Next >' button is highlighted.

5) Click "Exit" to complete the uninstallation.



4-3 Printer Driver Update

To update a printer driver using “PrnInst.exe” application, follow these steps below.

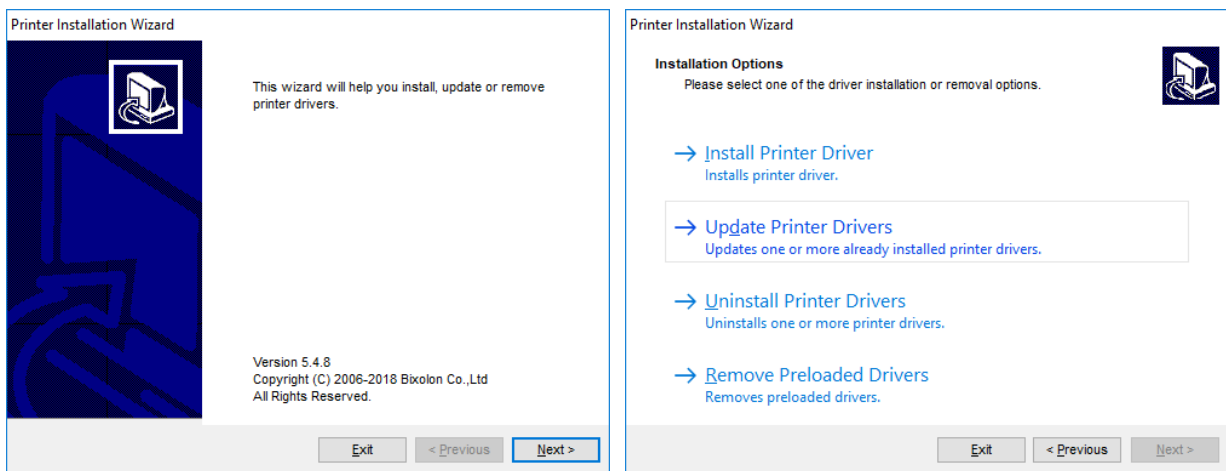
- 1) Run “PrnInst.exe” application. This application can be found in the default printer driver installation path. If you cannot find it, run the “Software_Label_Windows_Driver_V5.x.x.xxxx.exe” application.



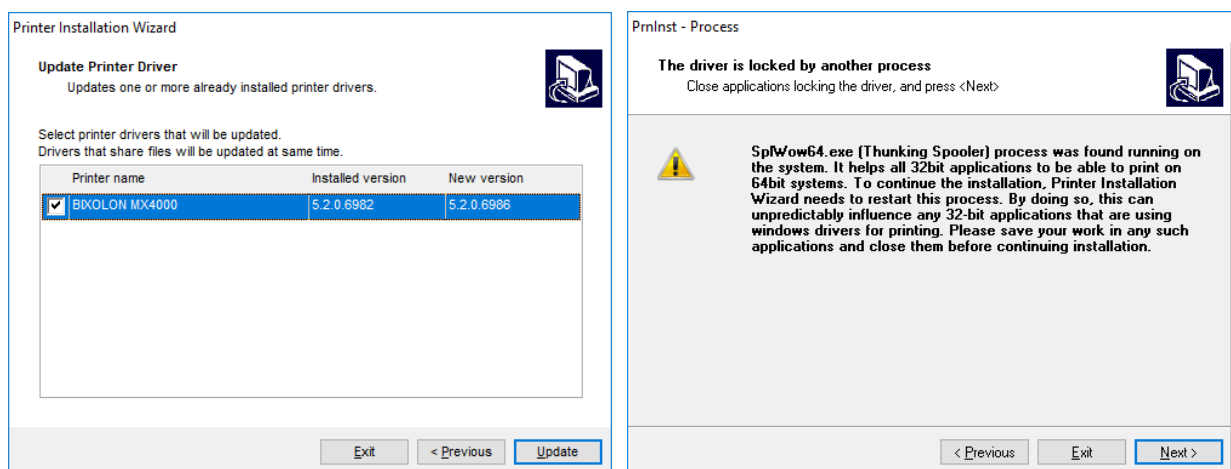
Note

Default Installation Path: C:\Program Files (x86)\BIXOLON\Printer drivers\Label Windows Driver

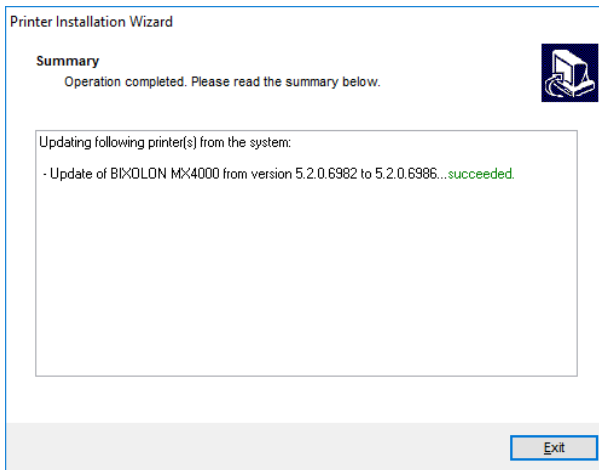
- 2) Click “Next” on the “Printer Installation Wizard” window.
- 3) Click “Update Printer Drivers”.



- 4) Select a printer to update its driver, and then click “Next”.
- 5) Compare Installed version column with New version column, and then click “Uppdate”. If you see a warning about “Splwow64.exe” during printer driver update, click “Next”. After clicking “Next”, “PrnInst.exe” application restarts the Splwow64.exe process. This unlocks the printer driver and completes the upgrade process.



6) Click “Exit”.



4-4 Steps for downloading fonts

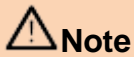
- To download true type fonts to the printer, double-click the "Bixelon Font Downloader" icon on the desktop to launch the program and follow the procedure below.



Caption

Only hexadecimal characters in the range 0x00 to 0xFF can be downloaded. In other words, Korean, Chinese and Japanese characters are not downloadable.

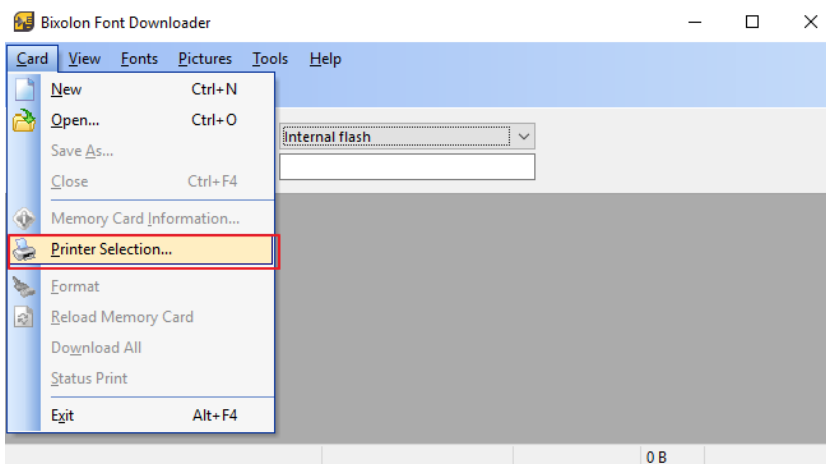
- 1) Run the font download application as an administrator.



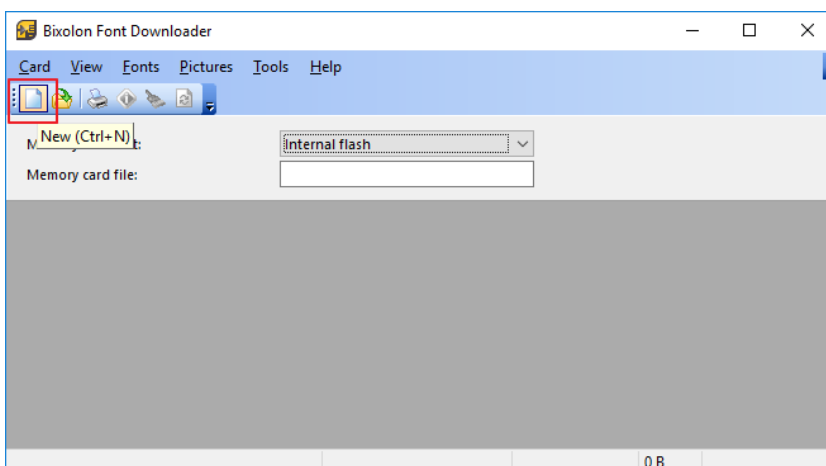
Note

Default Installation Path: C:\Program Files (x86)\BIXOLON\Font Download

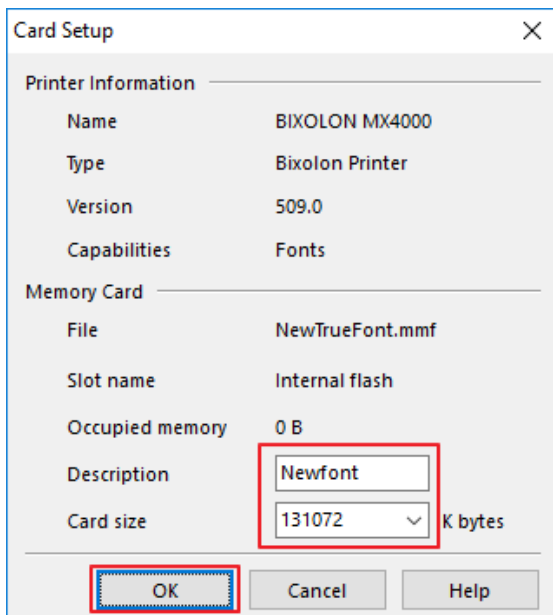
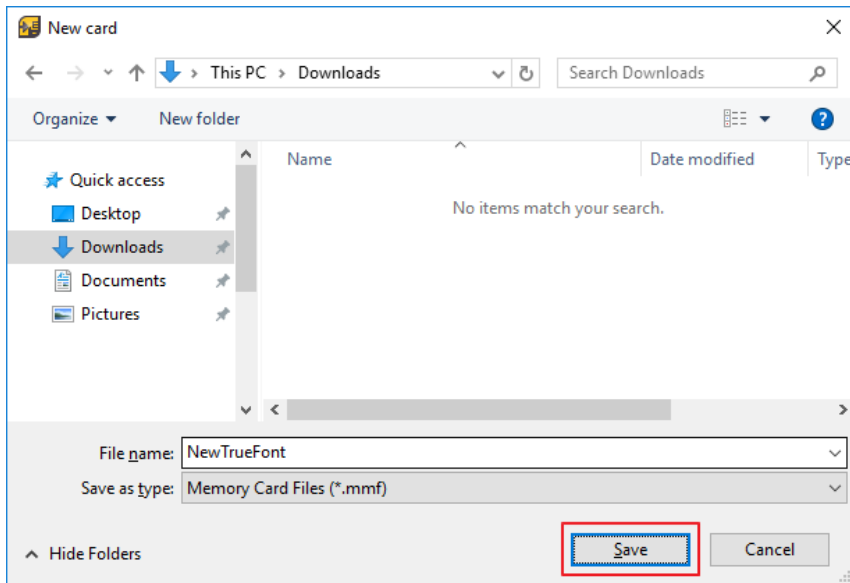
- 2) In the "Card" menu, click "Printer Selection" to select the printer to which the font will be downloaded.



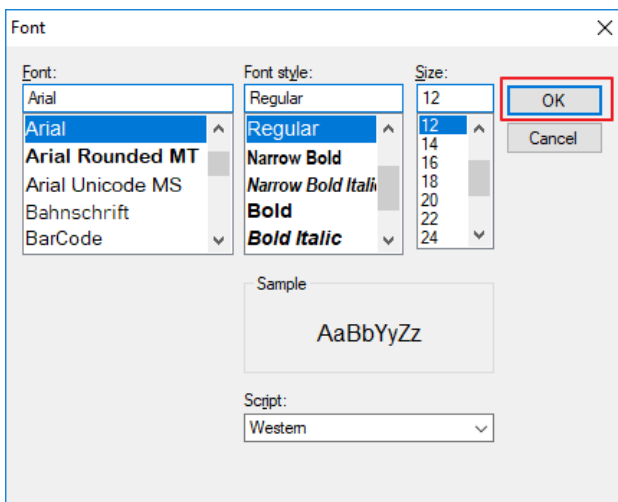
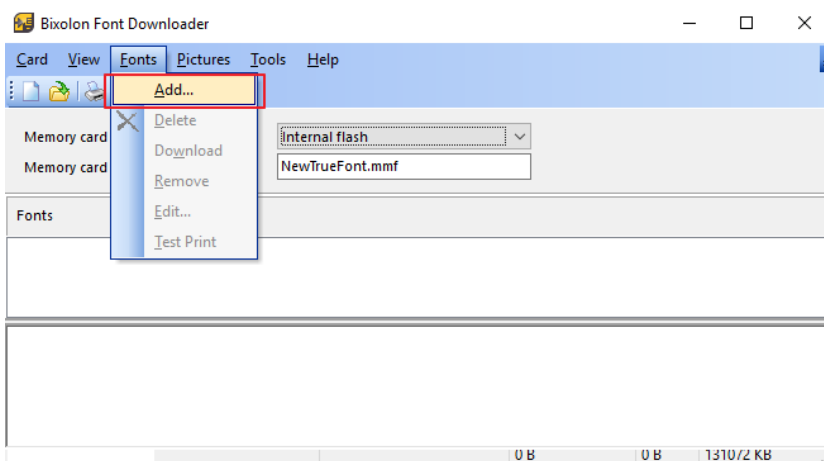
- 3) Click the New icon.



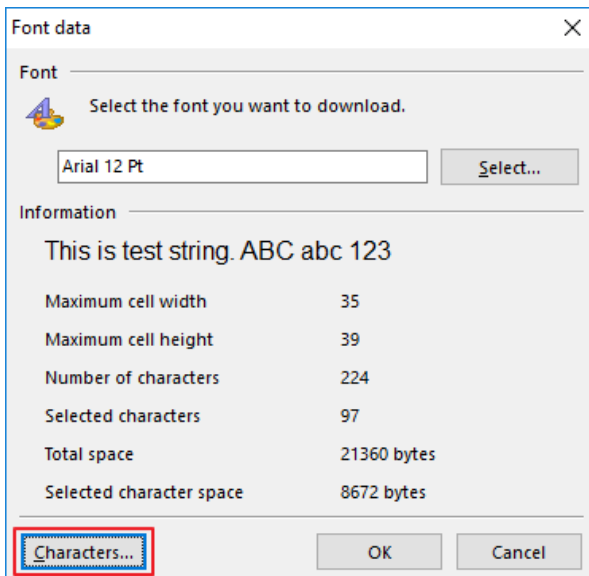
4) Set the path and name for the memory card file to be saved and click "Save".



- 5) In the "Fonts" menu, click "Add...". Select the font and size you want to download and click "OK".

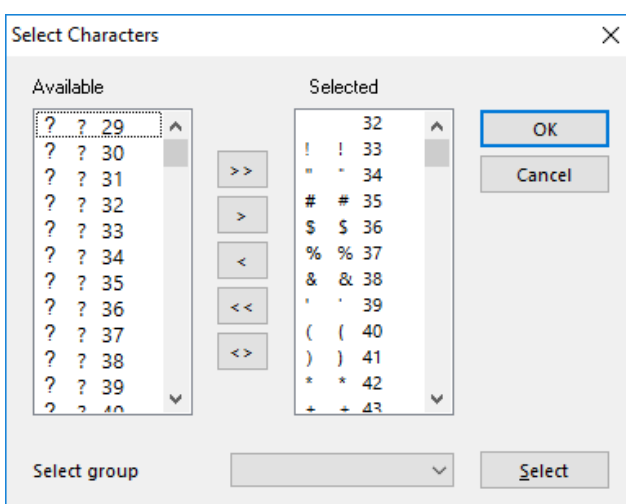


- 6) Check the information about the font to be downloaded. Click "Characters" to select the characters of the font to be downloaded.

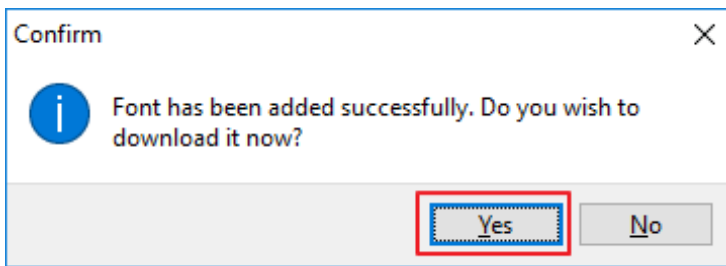


Symbol	Description
Available	Characters that can be added
Selected	Characters already added
>>	Add all the characters that can be added
>	Add selected characters
<	Remove selected characters
<<	Remove all added characters
<>	Replace the characters that can be added and the characters already added

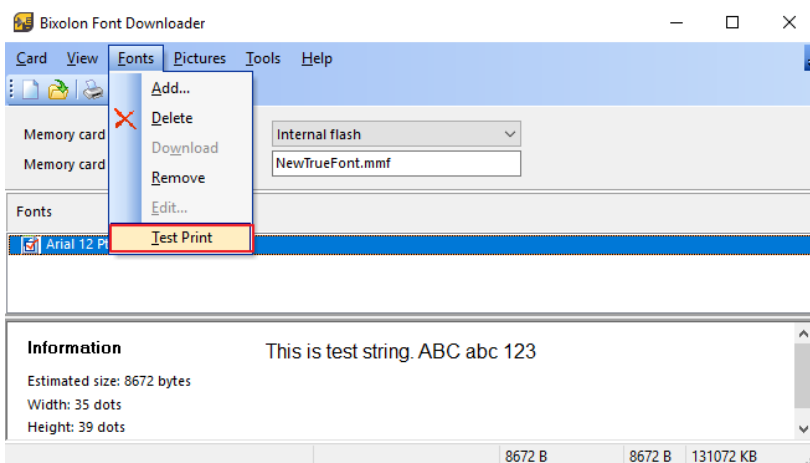
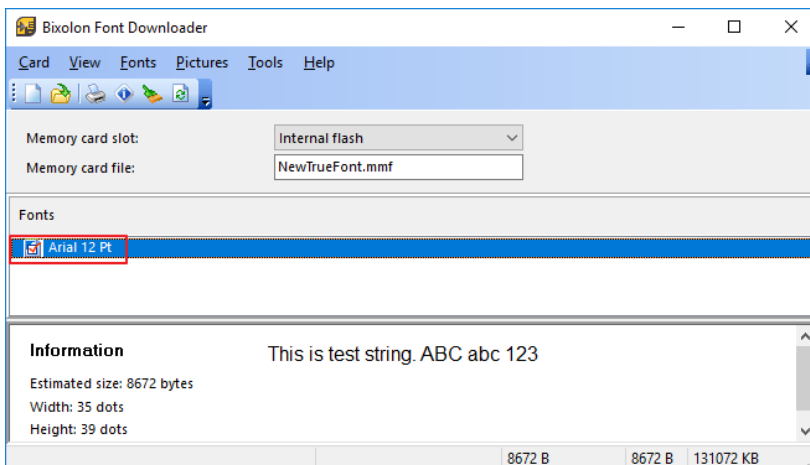
- 7) Check the character information to be added or deleted and click "OK".



8) Click "Yes" to proceed with the font download.



9) If the font download succeeds, the downloaded font is displayed in the font list.



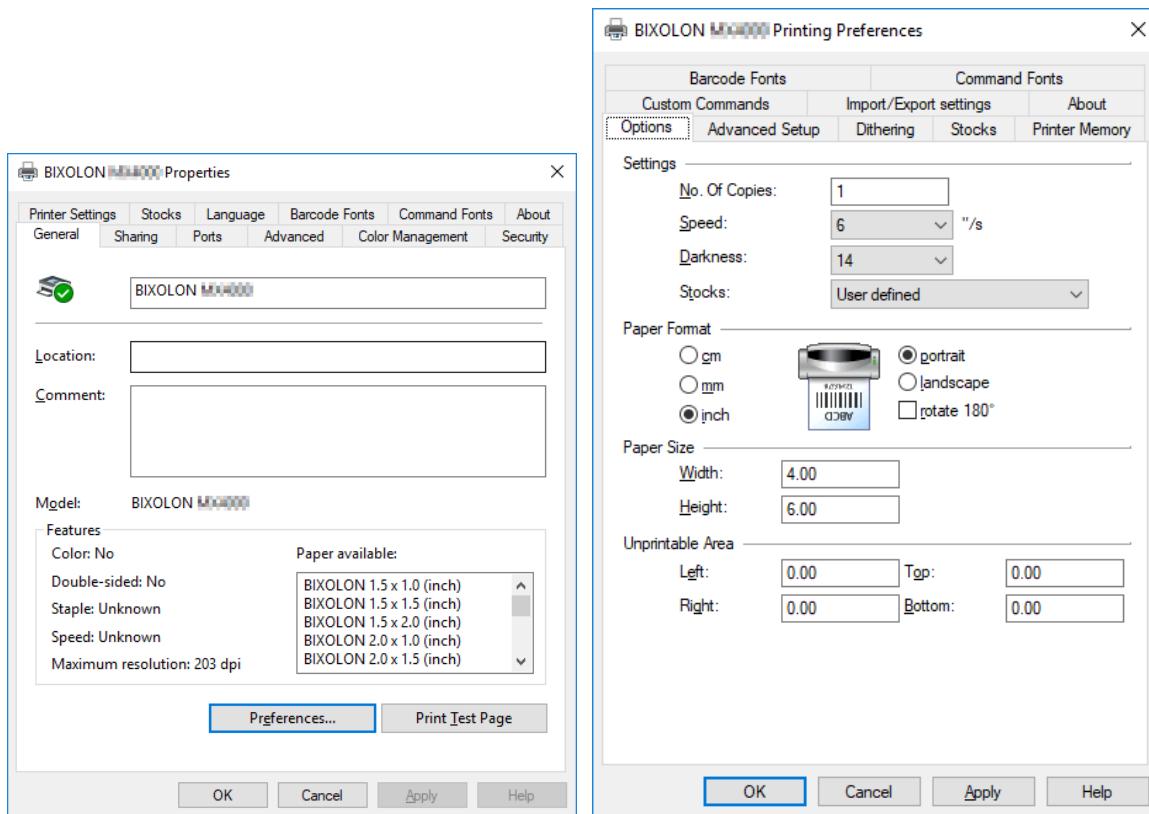
10) In the "Fonts" menu, click "Test Print" to check if the fonts are downloaded normally. Downloaded fonts can also be printed using SLCS commands and can be used in a manner similar to the example below.

Eg) T10,10,A,1,1,0,0,N,N,'This is test'
Eg) T10,10,B1,1,0,0,N,N,'This is test'

5. Printer Driver Settings

5-1 Printing Preferences

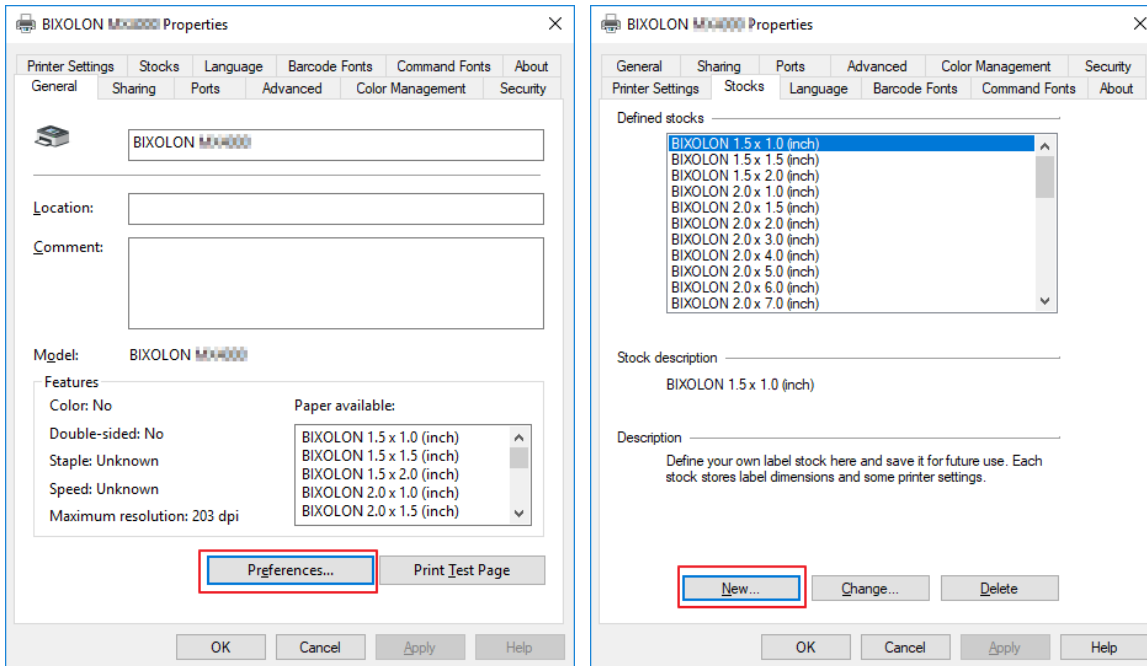
- The following functions can be configured after installing the printer driver.



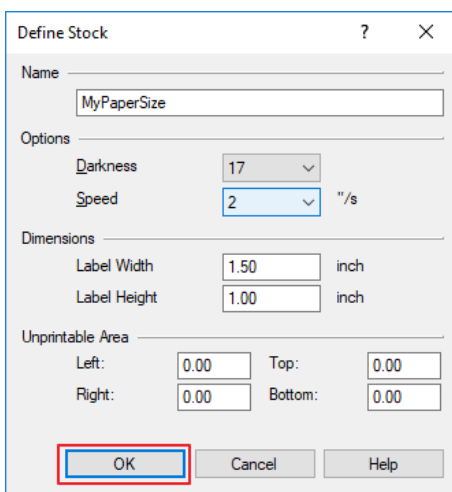
NO	Feature	Description
1	No. Of Copies	The number of copies
2	Speed	Set the printing speed
3	Darkness	The darkness level of printouts.
4	Portrait	The printer prints in portrait orientation.
5	Landscape	The printer prints in landscape orientation.
6	Rotate 180	The option of rotation 180 degree.
7	Width	Set the width of the paper.
8	Height	Set the height of the paper.
9	Unprintable Area	Set the unprintable area.

5-2 Adding new paper size

1) Click “Preferences...” and Click “New...”



2) Set a value you want and then click “OK”.



6. Specifications

6-1 Specifications

Product	Model	DPI	Max Printable Width	Print Speed Support
SLP Series	SLP-D220	203 dpi	432 dots	2.5,3,4,5,6ips
	SLP-D223	300 dpi	672 dots	2,2.5,3,4ips
	SLP-DX220	203 dpi	432 dots	3,4,5,6ips
	SLP-DX223	300 dpi	672 dots	2.5,3,4ips
	SLP-TX220	203 dpi	432 dots	3,4,5,6ips
	SLP-TX223	300 dpi	672 dots	2.5,3,4ips
	SLP-D420	203 dpi	864 dots	2.5,3,4,5,6,7ips
	SLP-D423	300 dpi	1248 dots	2,2.5,3,4ips
	SLP-DX420	203 dpi	864 dots	3,4,5,6,7ips
	SLP-DX423	300 dpi	1248 dots	3,4,5ips
	SLP-TX420	203 dpi	864 dots	3,4,5,6,7ips
	SLP-TX423	300 dpi	1248 dots	3,4,5ips
	SLP-T400	203 dpi	864 dots	2.5,3,4,5,6ips
	SLP-T403	300 dpi	1248 dots	2,2.5,3,4ips
	SLP-T400R	203 dpi	864 dots	2.5,3,4,5,6ips
	SLP-T403R	300 dpi	1248 dots	2,2.5,3,4ips
	SLP-TX400(RFID)	203 dpi	864 dots	3,4,5,6,7ips
	SLP-TX403(RFID)	300 dpi	1248 dots	3,4,5ips
	SLP-DL410	203 dpi	864 dots	3,4,5ips
SLP-DL413	300 dpi	1248 dots	3,4,5ips	
SPP Series	SPP-L3000	203 dpi	576 dots	1,2,3,4,5ips
SRP Series	SRP-770	203 dpi	832 dots	2.5,3,4,5ips
	SRP-770II	203 dpi	832 dots	2.5,3,4,5ips
	SRP-770III	203 dpi	832 dots	3,4,5ips
	SRP-E770III	203 dpi	832 dots	3,4,5ips
MX Series	MX4000	203 dpi	832 dots	2 to 14ips
	MX4030	300 dpi	1248 dots	2 to 10ips
	MX4060	600 dpi	2496 dots	2,3,4,5ips

6-2 Paper Size

1.5 x 1.0 inch (38.1 x 25.4 mm)	4.0 x 2.0 inch (101.6 x 50.8 mm)
1.5 x 1.5 inch (38.1 x 38.1 mm)	4.0 x 3.0 inch (101.6 x 76.2 mm)
1.5 x 2.0 inch (38.1 x 50.8 mm)	4.0 x 4.0 inch (101.6 x 101.6 mm)
2.0 x 1.0 inch (50.8 x 25.4 mm)	4.0 x 6.0 inch (101.6 x 152.8 mm)
2.0 x 1.5 inch (50.8 x 38.1 mm)	4.0 x 8.0 inch (101.6 x 203.2 mm)
2.0 x 2.0 inch (50.8 x 50.8 mm)	4.0 x 12.0 inch (101.6 x 304.8 mm)
3.0 x 1.0 inch (76.2 x 25.4 mm)	
3.0 x 1.5 inch (76.2 x 38.1 mm)	
3.0 x 2.0 inch (76.2 x 50.8 mm)	
3.5 x 1.0 inch (88.9 x 25.4 mm)	
3.5 x 1.5 inch (88.9 x 38.1 mm)	
3.5 x 2.0 inch (88.9 x 50.8 mm)	
3.5 x 3.0 inch (88.9 x 76.2 mm)	
3.5 x 4.0 inch (88.9 x 101.6 mm)	
3.5 x 6.0 inch (88.9 x 152.8 mm)	
4.0 x 1.0 inch (101.6 x 25.4 mm)	
4.0 x 1.5 inch (101.6 x 38.1 mm)	

6-3 Barcode Fonts

- Barcode fonts below can be used from any windows application. Barcode symbol will not be displayed. Only barcode data will be shown on screen but barcode will print correctly.

No	Font Name	1d / 2d
1	BIXOLON CODABAR	One-dimensional Barcodes
2	BIXOLON CODE128	
3	BIXOLON CODE128A	
4	BIXOLON CODE128B	
5	BIXOLON CODE128C	
6	BIXOLON CODE39	
7	BIXOLON CODE93	
8	BIXOLON EAN13	
9	BIXOLON EAN8	
10	BIXOLON I2OF5	
11	BIXOLON IMB	
12	BIXOLON UCC/EAN128	
13	BIXOLON UPC-A	
14	BIXOLON UPC-E	
15	BIXOLON MAXICODE	Two-dimensional Codes
16	BIXOLON PDF417	
17	BIXOLON QR	
18	BIXOLON DATAMATRIX	

Copyright

© BIXOLON Co., Ltd. All rights reserved.

This user manual and all property of the product are protected under copyright law. It is strictly prohibited to copy, store, and transmit the whole or any part of the manual and any property of the product without the prior written approval of BIXOLON Co., Ltd. The information contained herein is designed only for use with this BIXOLON product. BIXOLON is not responsible for any direct or indirect damages, arising from or related to use of this information.

- The BIXOLON logo is the registered trademark of BIXOLON Co., Ltd.
- All other brand or product names are trademarks of their respective companies or organizations.

BIXOLON Co., Ltd. maintains ongoing efforts to enhance and upgrade the functions and quality of all our products.

In the following, product specifications and/or user manual content may be changed without prior notice.

Caution

Some semiconductor devices are easily damaged by static electricity. You should turn the printer “OFF”, before you connect or remove the cables on the rear side, in order to guard the printer against the static electricity. If the printer is damaged by the static electricity, you should turn the printer “OFF”.

